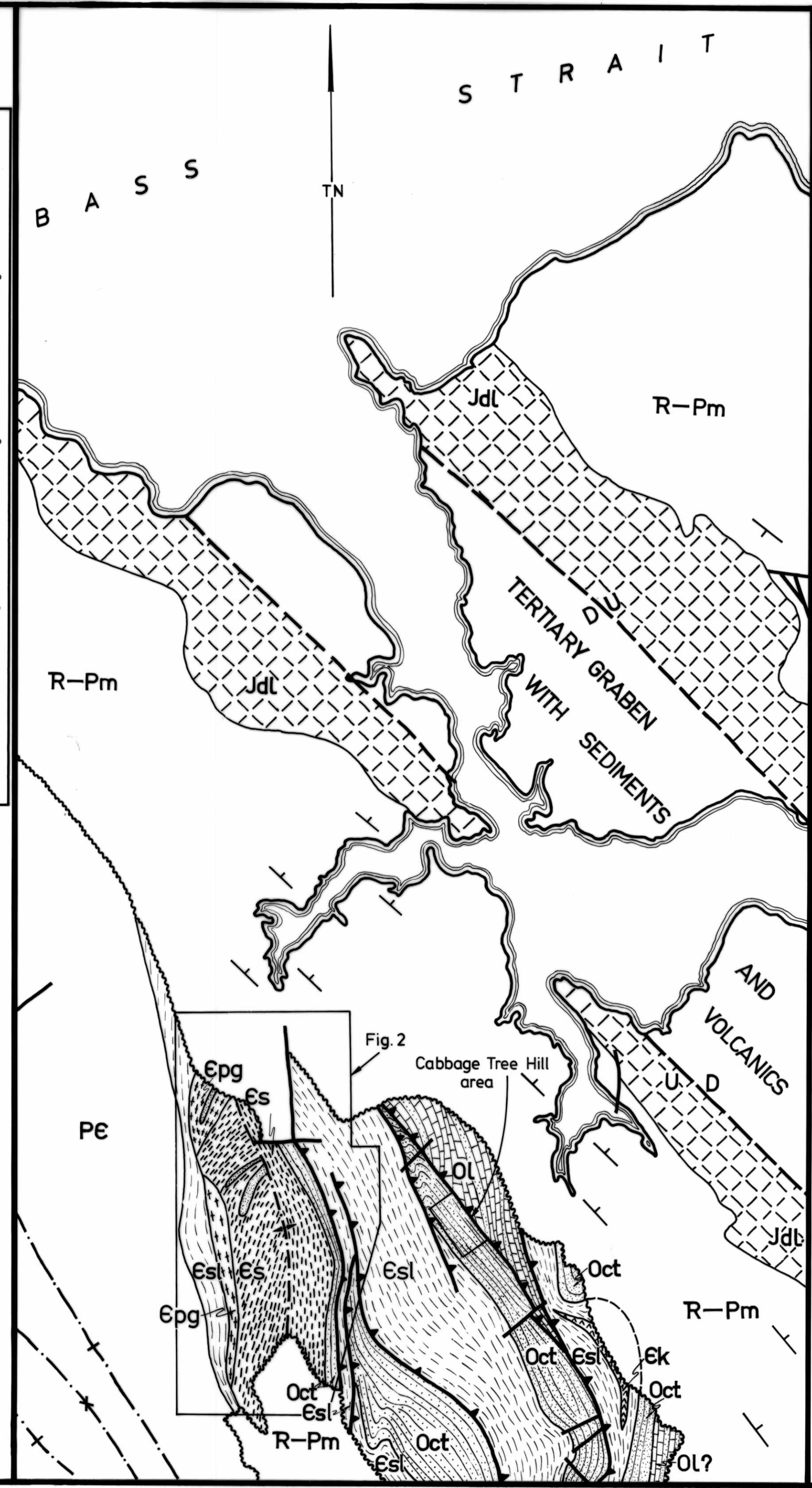
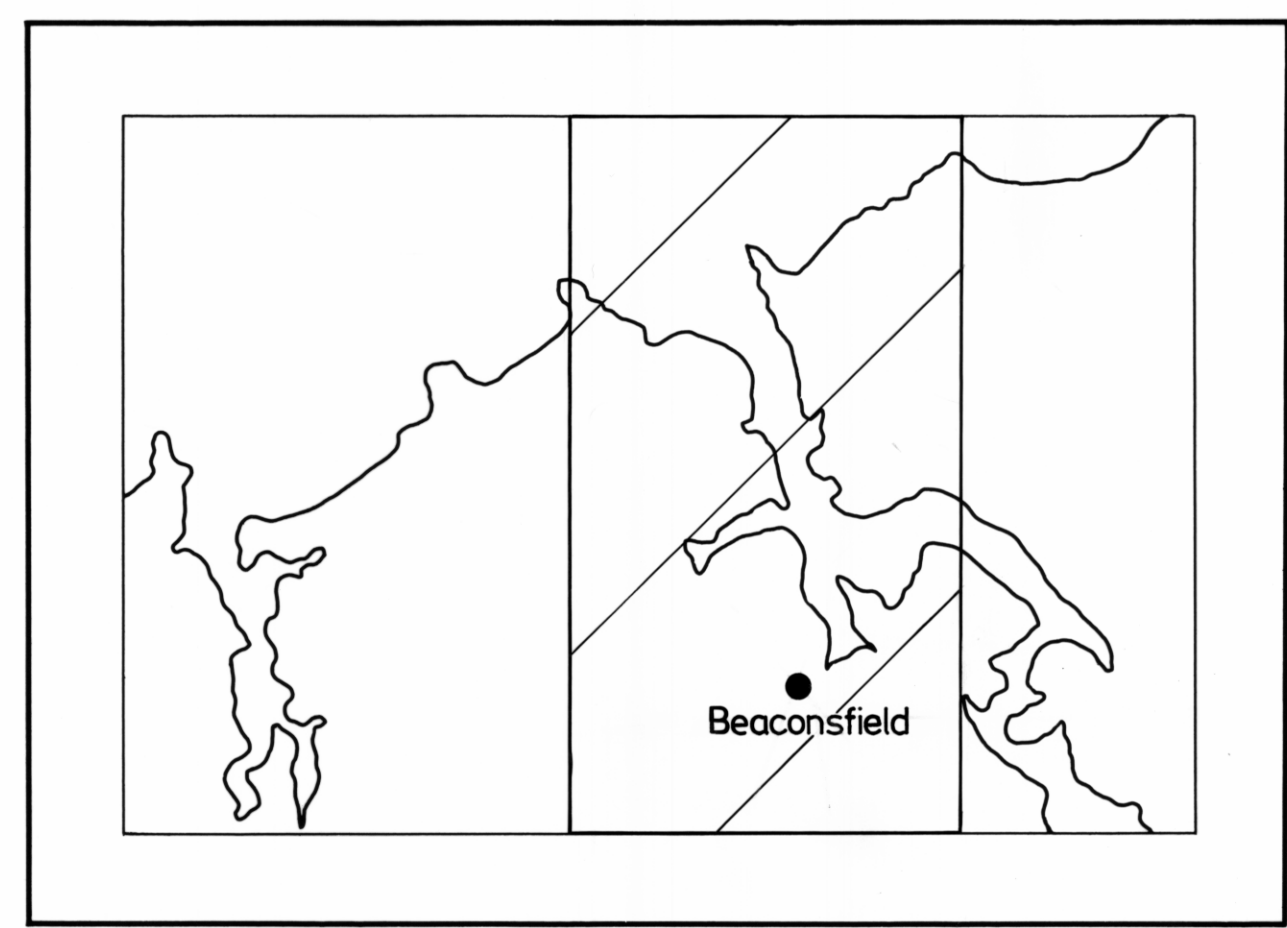
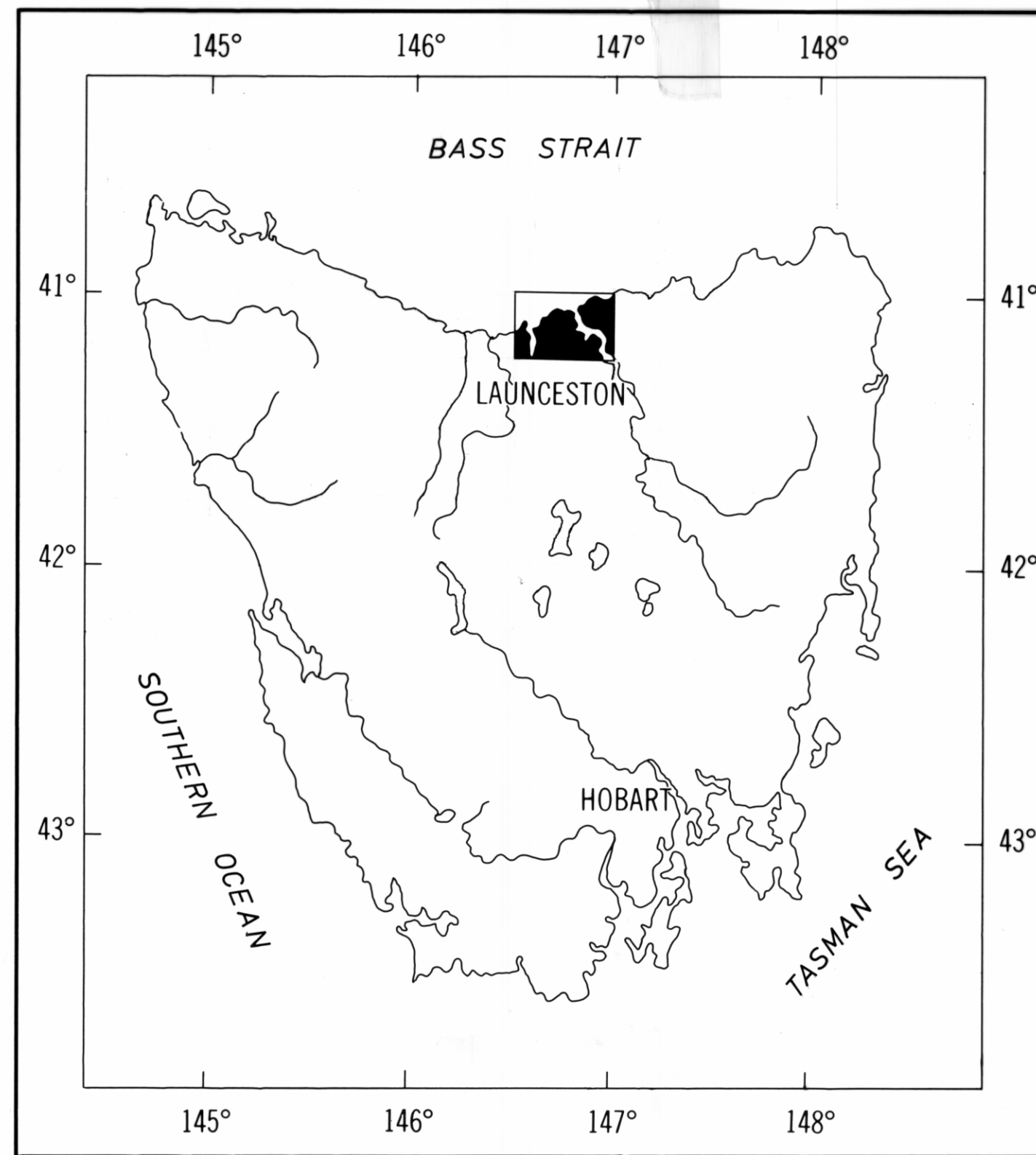


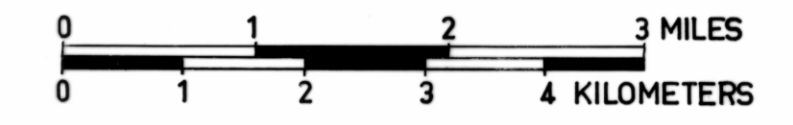
NOT FOR MICROFILMING

5 cm

### LOCALITY MAP



## BEDROCK GEOLOGY BEACONSFIELD



	Jdl	DOLERITE JURASSIC	
	R-Pm	PERMO—TRIASSIC	
	Ol	LIMESTONE	} ORDOVICIAN
	Oct	SANDSTONE & CONGLOMERATE	
	Esl	SILTSTONE & SLATE	} CAMBRIAN
	Epg	LAYERED PYROXENITE & GABBRO	
	Es	SERPENTINITE with raft of metamorphic rocks	
	Ek	KERATOPHYRE	
	PE	PRECAMBRIAN	

- NORMAL FAULT
- THRUST FAULT
- UNCONFORMITY
- REGIONAL DIP OF PERMIAN
- FOLD TRACE

MODIFIED FROM GEE  
AND LEGGE (1974)

Fig. 1

REDUCE TO 198 mm.