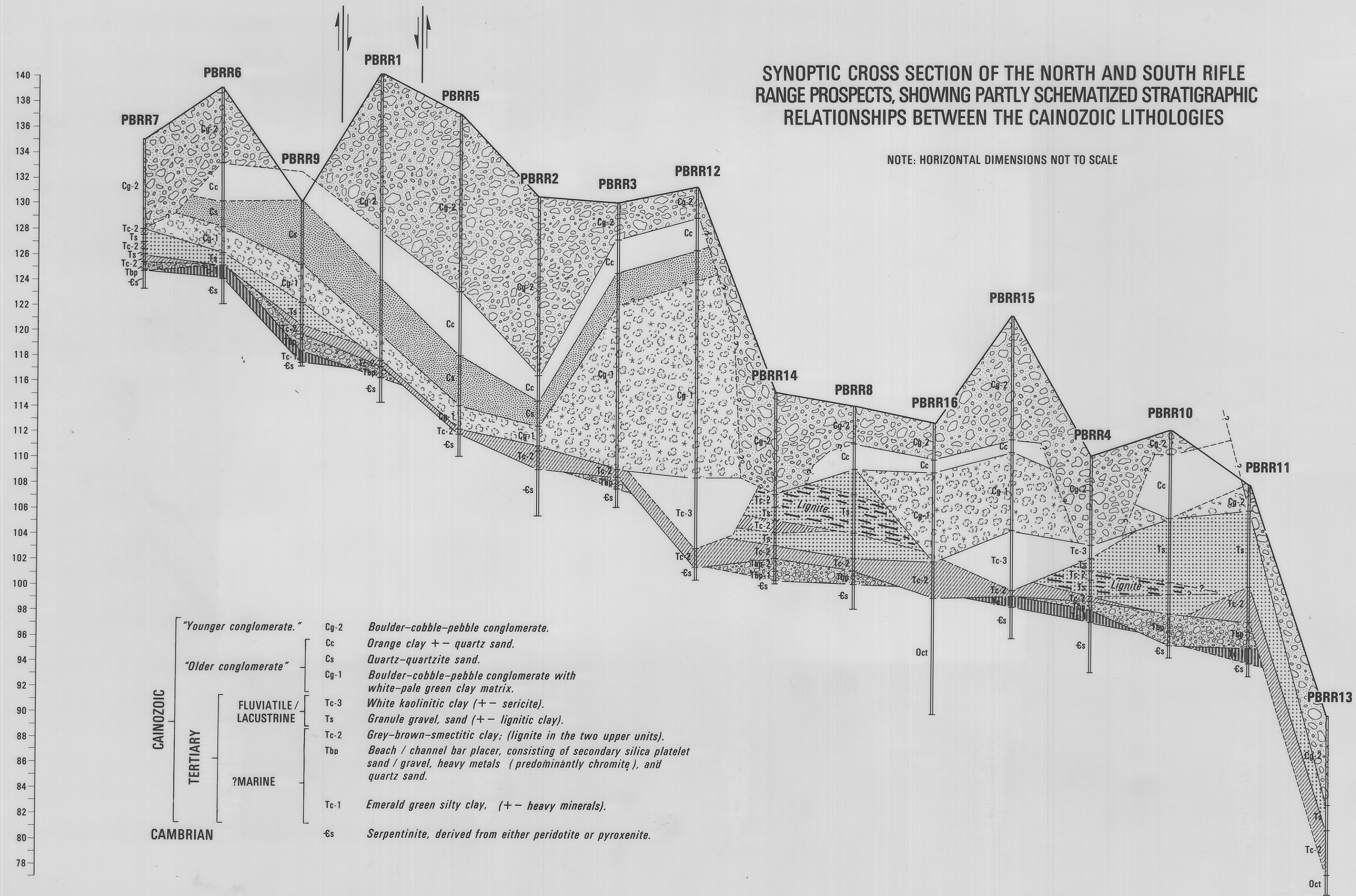


SYNOPTIC CROSS SECTION OF THE NORTH AND SOUTH RIFLE RANGE PROSPECTS, SHOWING PARTLY SCHEMATIZED STRATIGRAPHIC RELATIONSHIPS BETWEEN THE CAINOZOIC LITHOLOGIES

NOTE: HORIZONTAL DIMENSIONS NOT TO SCALE



- | | | | | |
|-----------|---------------------------|-------------------------|------|--|
| CAINOZOIC | TERTIARY | "Younger conglomerate." | Cg-2 | Boulder-cobble-pebble conglomerate. |
| | | "Older conglomerate" | Cc | Orange clay +- quartz sand. |
| | FLUVIATILE/
LACUSTRINE | | Cs | Quartz-quartzite sand. |
| | | | Cg-1 | Boulder-cobble-pebble conglomerate with white-pale green clay matrix. |
| | | | Tc-3 | White kaolinitic clay (+ - sericite). |
| | | | Ts | Granule gravel, sand (+ - lignitic clay). |
| | | | Tc-2 | Gray-brown-smectitic clay; (lignite in the two upper units). |
| | | | Tbp | Beach / channel bar placer, consisting of secondary silica platelet sand / gravel, heavy metals (predominantly chromite), and quartz sand. |
| | | | Tc-1 | Emerald green silty clay. (+ - heavy minerals). |
| | | | -Es | Serpentinite, derived from either peridotite or pyroxenite. |
| CAMBRIAN | | | | |