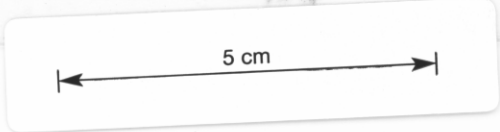
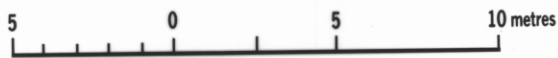


284



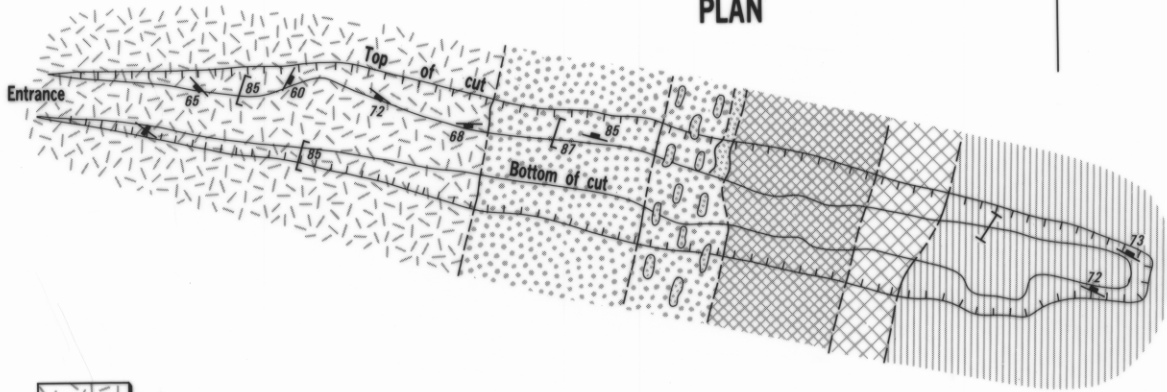
PINNACLES MINE — SOUTH OPEN CUT



P.L.F. COLLINS, 1979



PLAN



Ignimbrite



Litho-vitric tuff



Chert



Chert boudins



Cu-Pb-Zn sulphide mineralisation (massive and as veins in chert)



Chert/rhyolite-pyrite (massive, disseminated and vein pyrite)



Chert/rhyolite (partly as large pods in highly schistose rock)

Joint; dipping, vertical

Cleavage; dipping, vertical

Geological boundary

NORTH FACE

V/H = 1

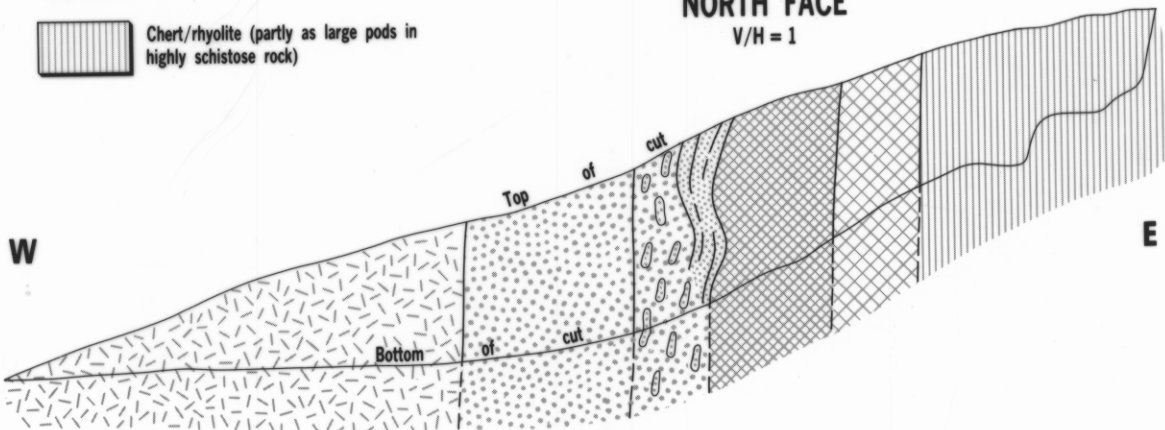


Figure 14