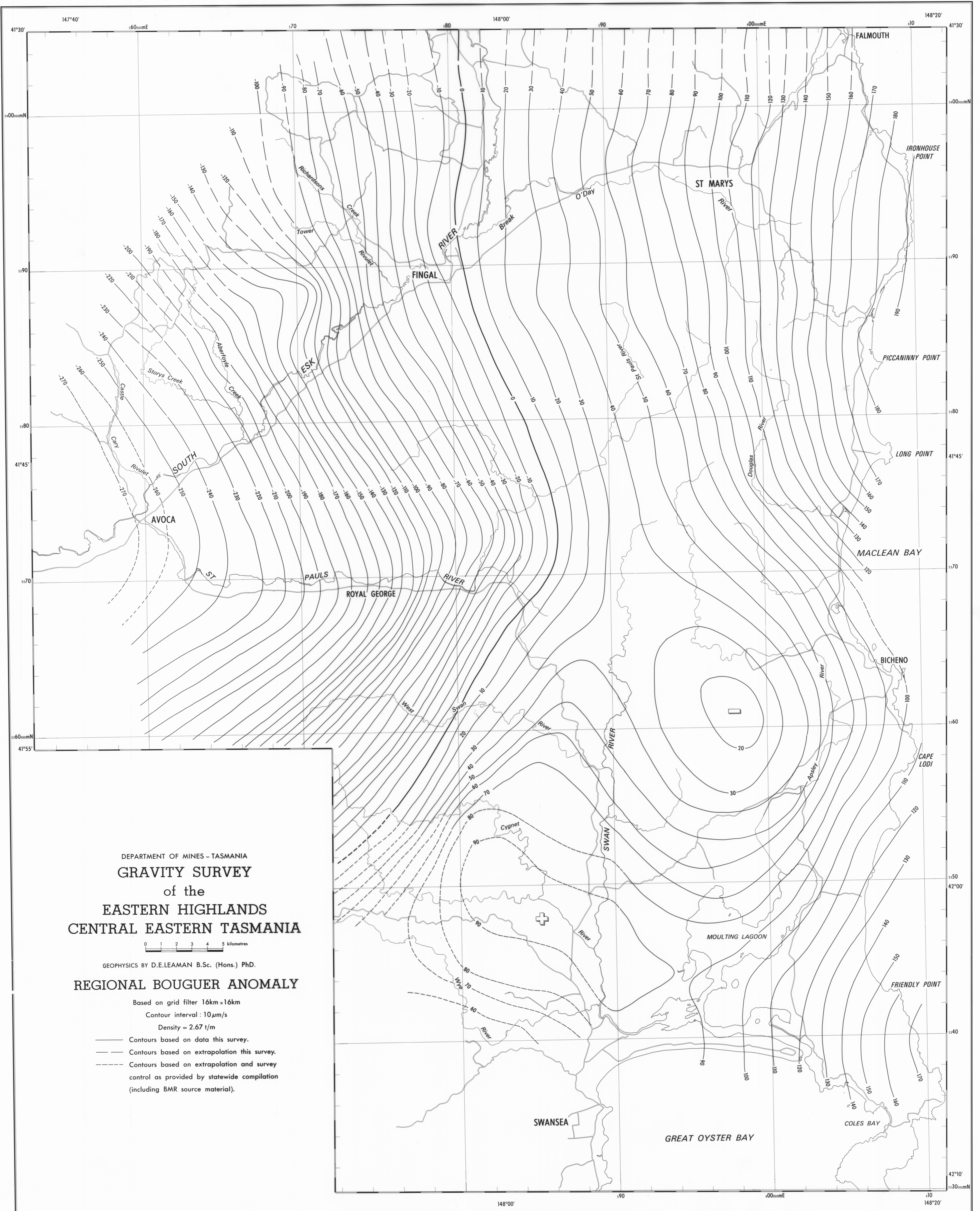


5 cm



DEPARTMENT OF MINES - TASMANIA
GRAVITY SURVEY
 of the
EASTERN HIGHLANDS
CENTRAL EASTERN TASMANIA

0 1 2 3 4 5 kilometres

GEOPHYSICS BY D.E. LEAMAN B.Sc. (Hons.) Ph.D.

REGIONAL BOUGUER ANOMALY

Based on grid filter 16km x 16km
 Contour interval: 10 $\mu\text{m/s}$
 Density = 2.67 t/m

- Contours based on data this survey.
- - - Contours based on extrapolation this survey.
- - - Contours based on extrapolation and survey control as provided by statewide compilation (including BMR source material).

Figure 7