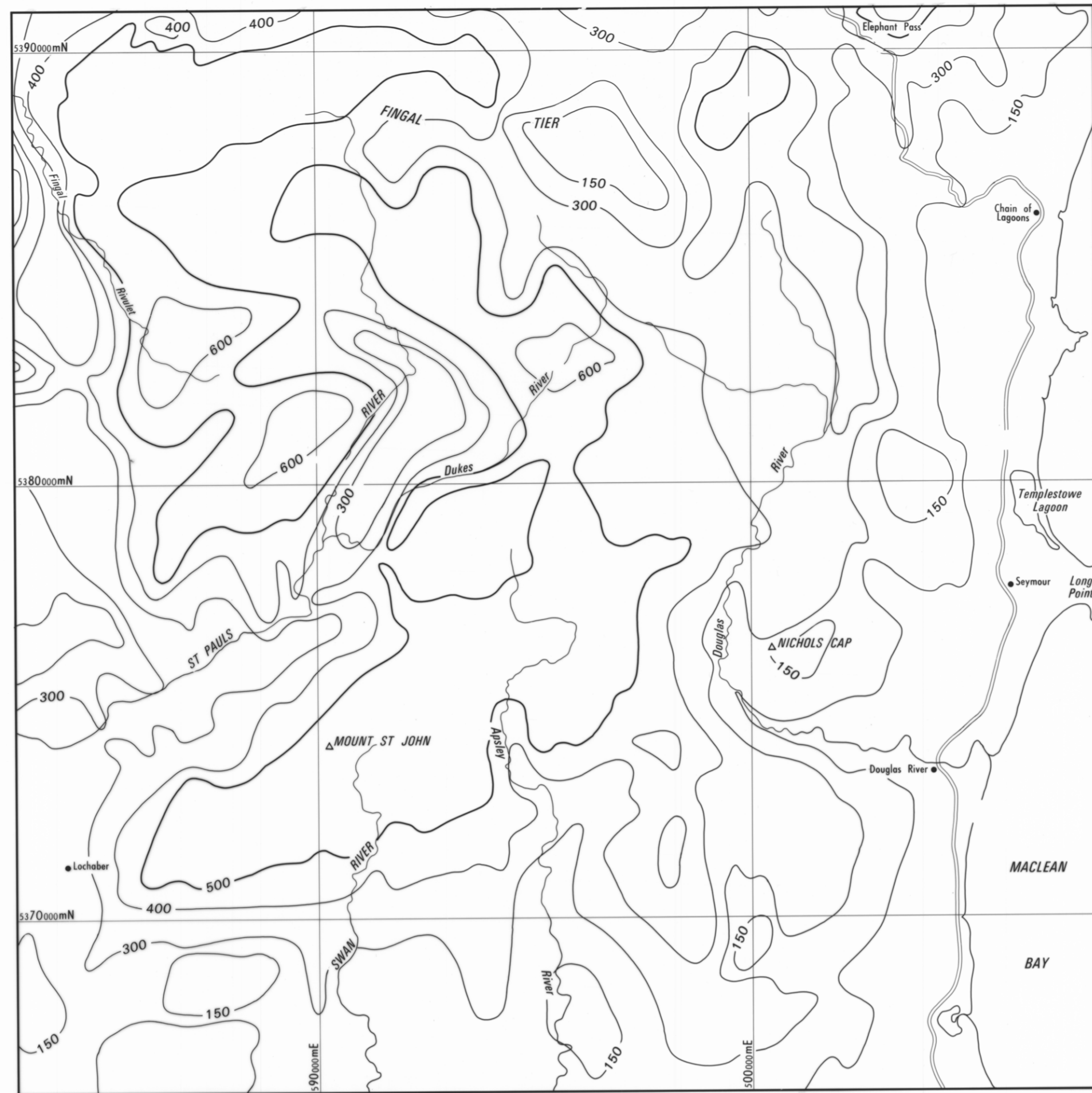
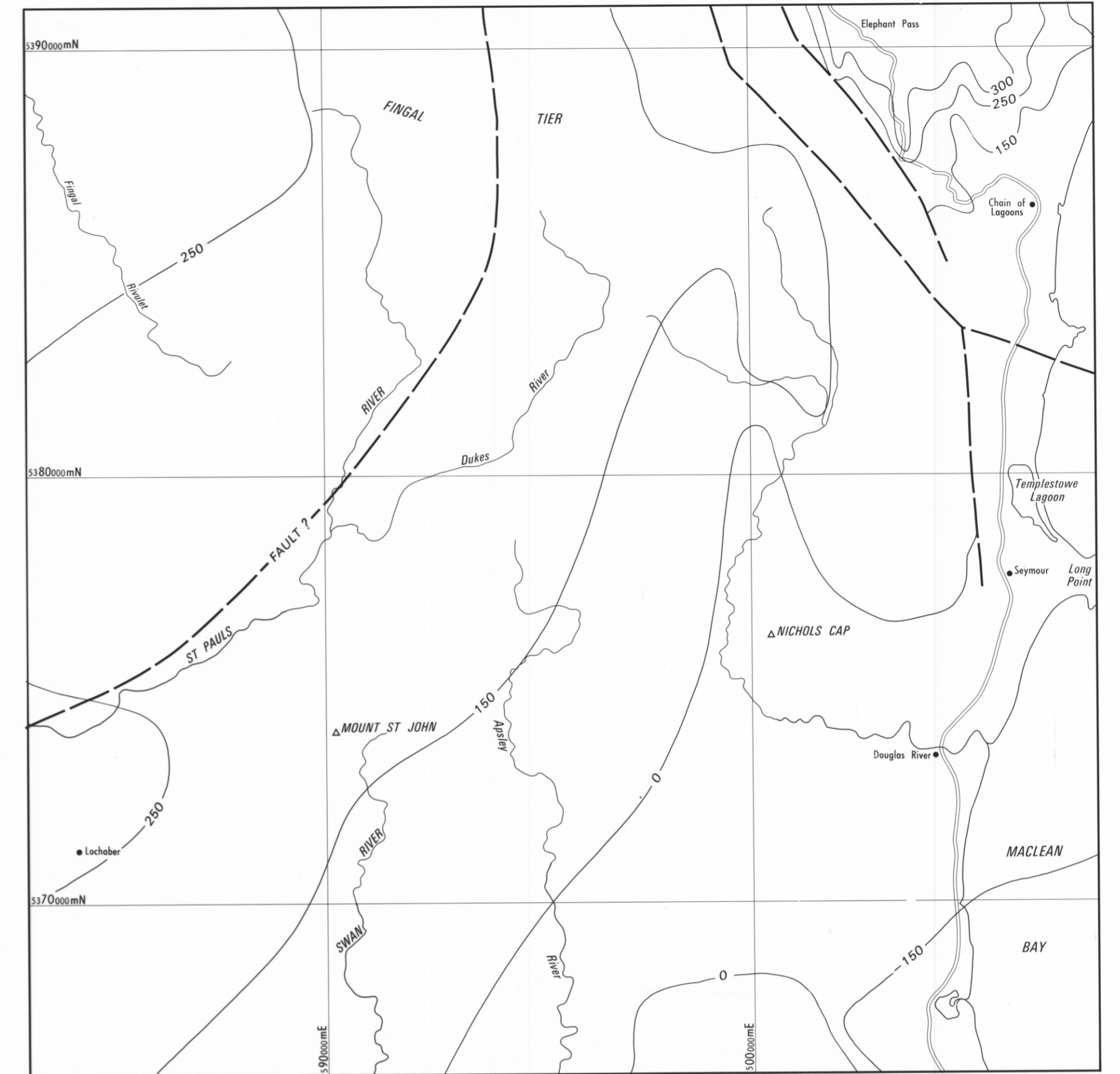


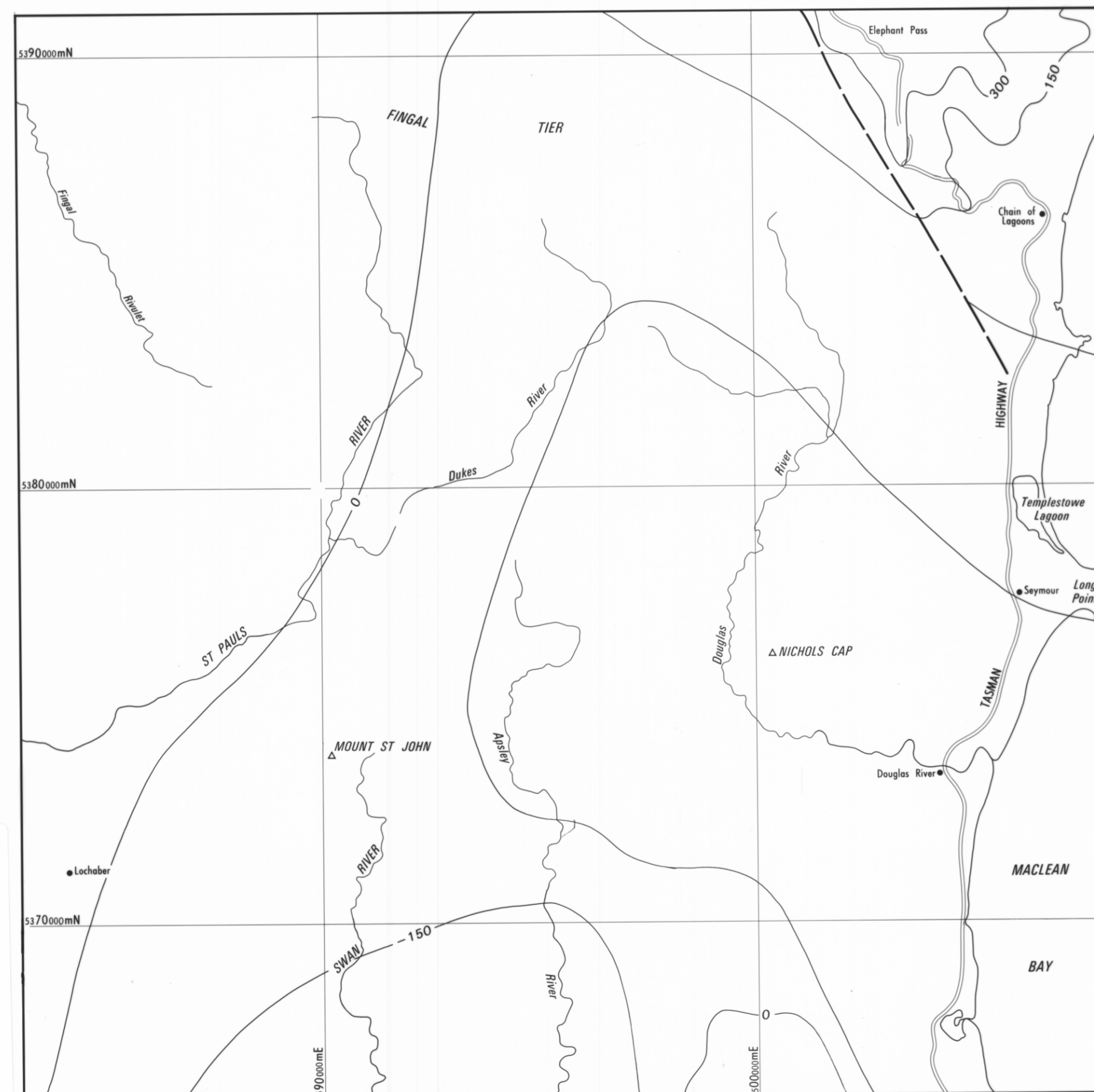
PART I TOP OF DOLERITE OR TOPOGRAPHY TO BASE LEVEL  $\Delta = + 0.16 \text{ t/m}^3$



PART II TOP OF TRIASSIC COAL MEASURES OR TOPOGRAPHY TO BASE LEVEL  $\Delta = - 0.48 \text{ t/m}^3$



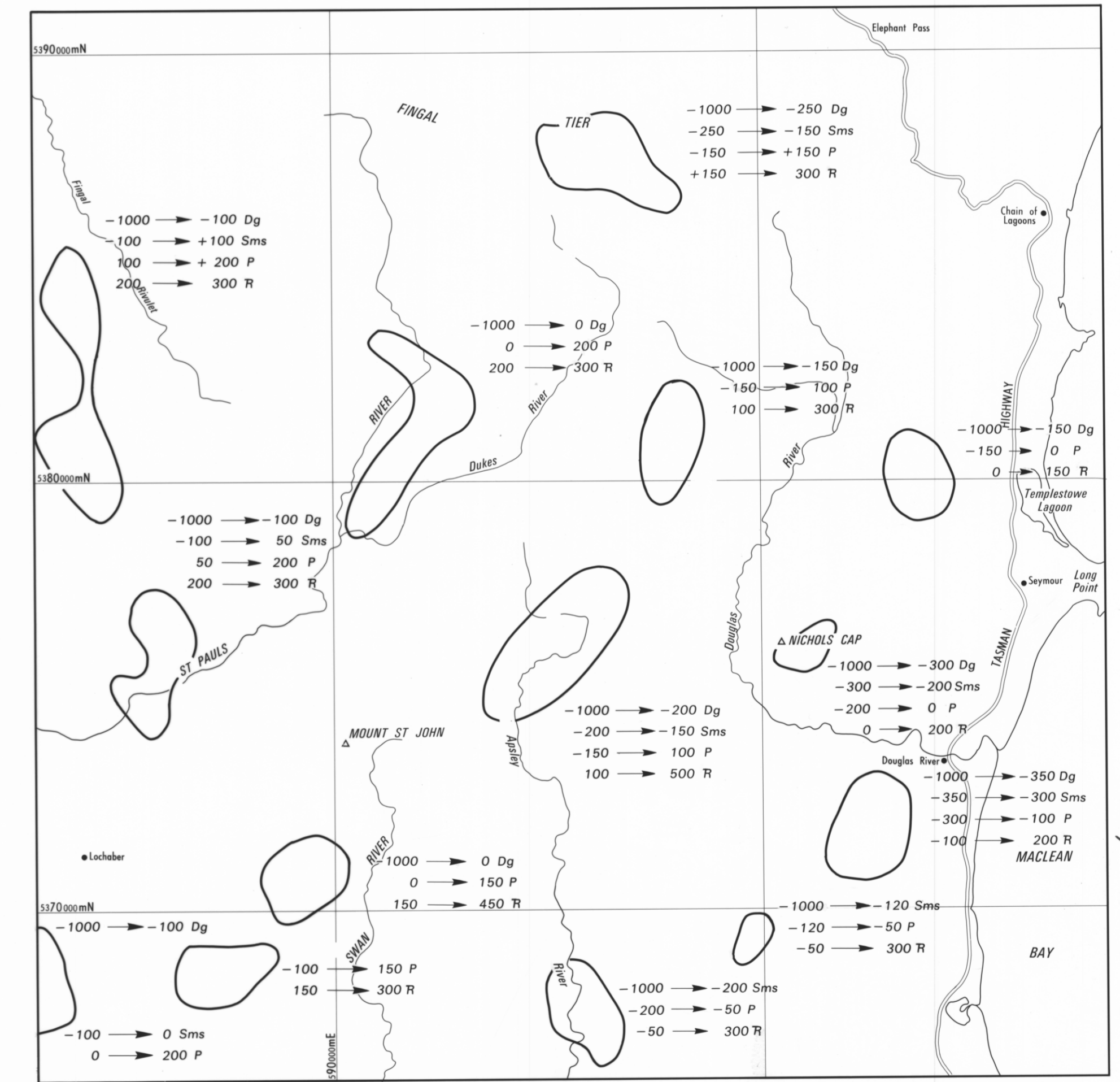
PART III TOP OF PERMIAN TO BASE LEVEL  $\Delta = + 0.10 \text{ t/m}^3$



PART IV TOP OF MATHINNA BEDS TO BASE LEVEL  $\Delta = + 0.22 \text{ t/m}^3$



PART V TOP OF GRANITE TO BASE LEVEL  $\Delta = - 0.05 \text{ t/m}^3$



PART VI DOLERITE FEEDERS TO BASE DOLERITE AS DEFINED BY PART I LESS PART II CONTRASTS INDICATED.

**SPECIFICATION OF INITIAL QUANTITATIVE MODEL ASSESSMENT — REGIONAL SURVEY CORE AREA**

4655 s / 49, 56