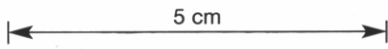
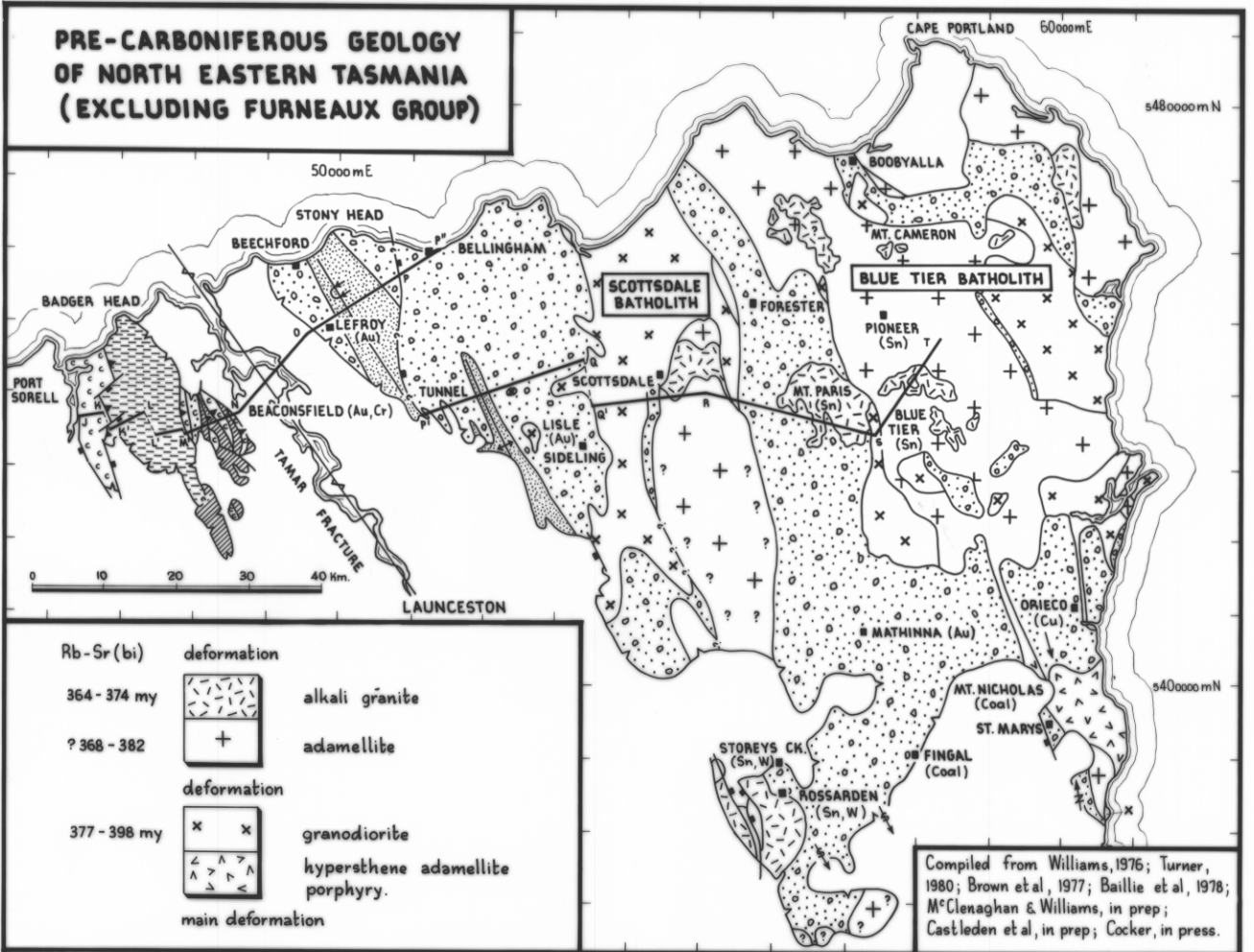


301

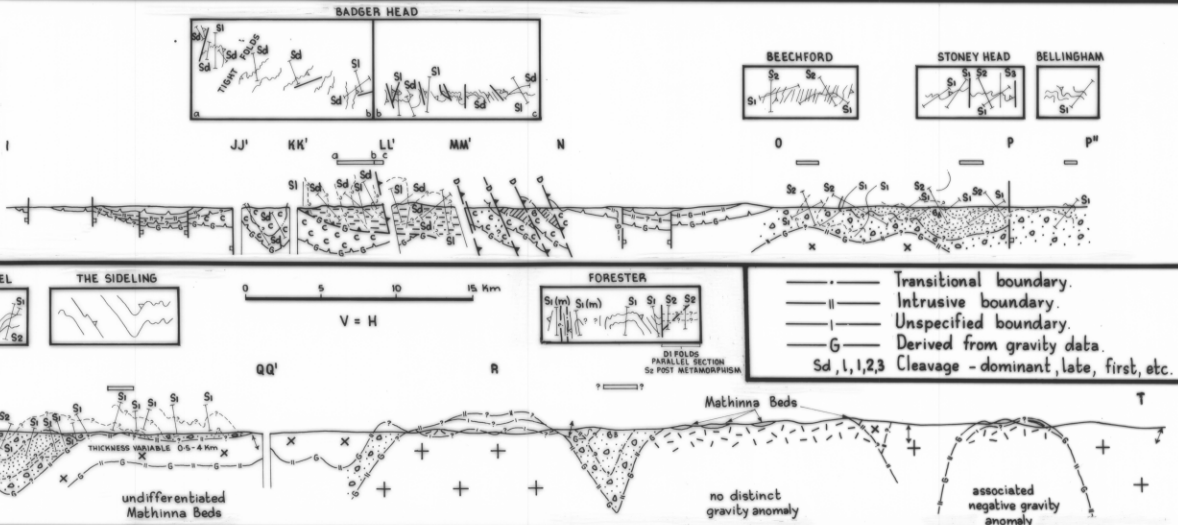


PRE-CARBONIFEROUS GEOLOGY OF NORTH EASTERN TASMANIA (EXCLUDING FURNEAUX GROUP)



- Rb-Sr (bi) deformation
- 364 - 374 my alkali granite
- ? 368 - 382 adamellite
- deformation
- 377 - 398 my granodiorite
- hypersthene adamellite porphyry.
- main deformation

Compiled from Williams, 1976; Turner, 1980; Brown et al, 1977; Baillie et al, 1978; McClenaghan & Williams, in prep; Castleden et al, in prep; Cocker, in press.



- · — · — · Transitional boundary.
- || — || — || Intrusive boundary.
- | — | — | Unspecified boundary.
- G — G — G Derived from gravity data.
- Sd, 1, 1, 2, 3 Cleavage - dominant, late, first, etc.

WEST OF TAMAR FRACTURE

EAST OF TAMAR FRACTURE

