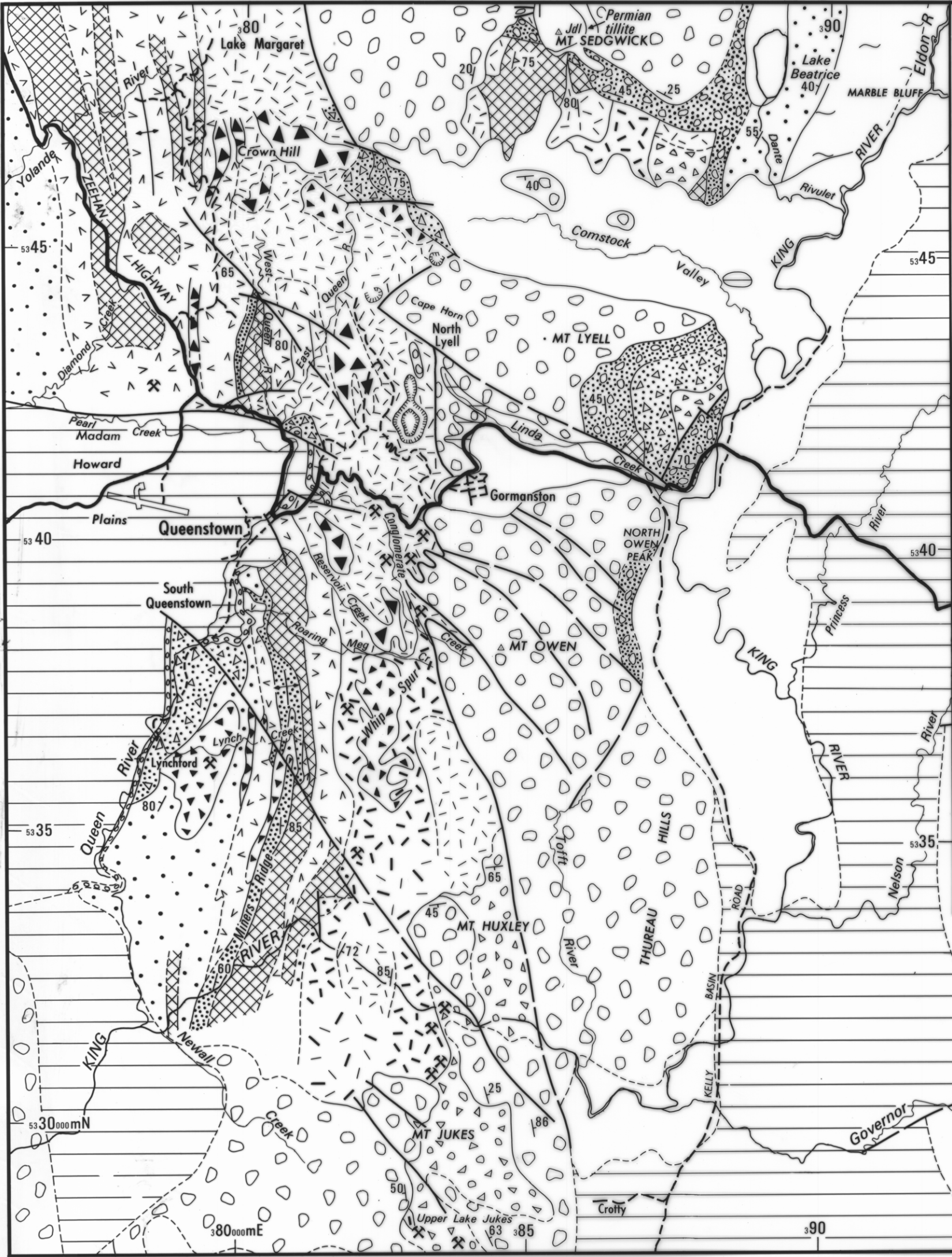


4707E

414

5 cm



**CAINOZOIC**

Undifferentiated – mostly Pleistocene moraine.

**ORDOVICIAN-SILURIAN-DEVONIAN**

Undifferentiated Ordovician limestone and Siluro-Devonian sedimentary rocks.

**LATE CAMBRIAN-EARLY ORDOVICIAN**

Owen Conglomerate, with Pioneer Beds correlate indicated in Queenstown area.

**MT. READ VOLCANICS AND ASSOCIATED ROCKS**

**Tyndall Group and Correlates**

Volcaniclastic conglomerate and sandstone.

Comstock Tuff.

Quartz – phytic volcanic rocks.

Mixed or undifferentiated sequences.

**Central Sequence**

Ash flows, agglomerates, tuffs, lavas.

Major feldspar porphyry bodies.

Undifferentiated feldspar – phytic volcanics and intrusives.

Andesite intrusives.

Basic – intermediate pyroclastics and lavas.

**Western Sequence and Correlates.**

Dominantly sedimentary sequence, with Miners Ridge Sandstone indicated (dense stipple).

Mainly tuffs or interbedded tuffs and sedimentary rocks.

Dominantly quartz – feldspar porphyry – intrusive and extrusive.

Basic – intermediate volcanics.

**CAMBRIAN**

**PRECAMBRIAN**

Undifferentiated quartz schist, quartzite, phyllite etc. of Tyennan region.

Geological boundary – accurate, approximate, inferred.

Fault.

Representative bedding readings.

Prospect.

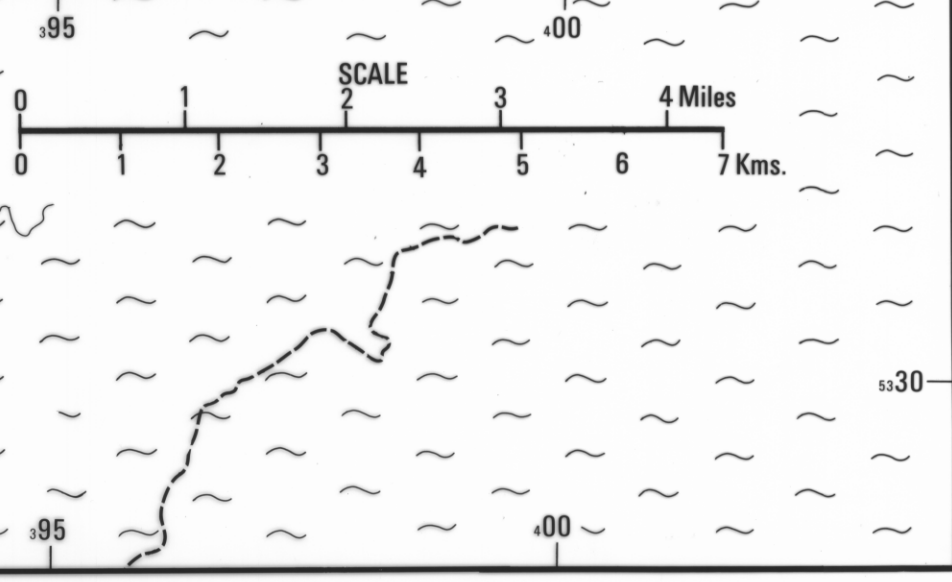


FIG 3