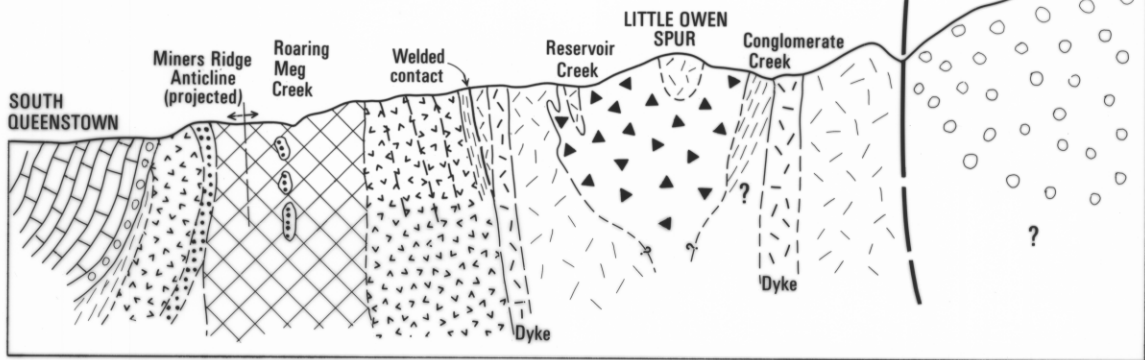
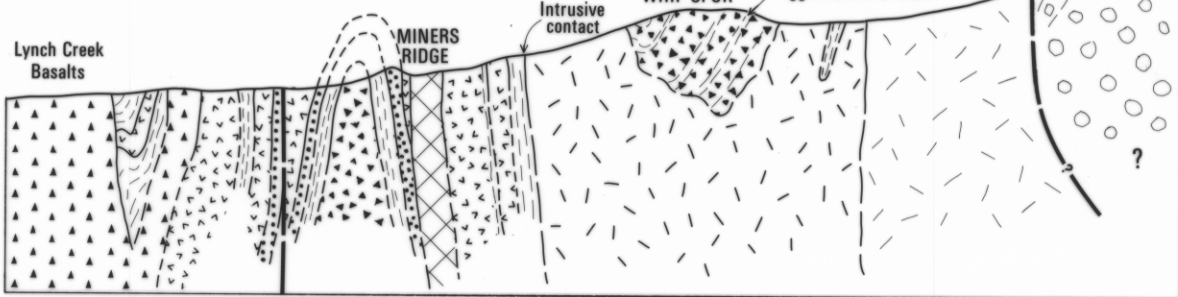


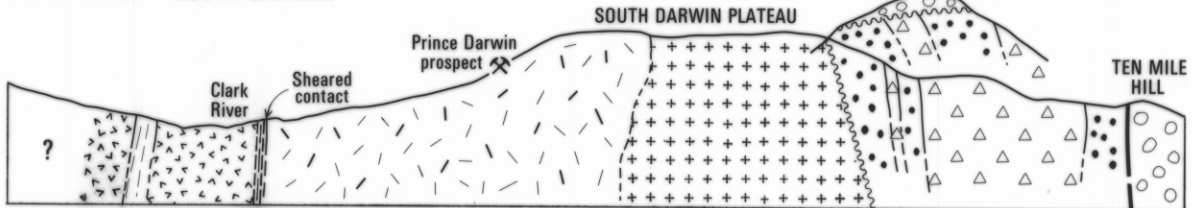
SOUTH QUEENSTOWN - MT. OWEN



MINERS RIDGE - WHIP SPUR



CLARK VALLEY - SOUTH DARWIN



- Ordovician limestone
- Owen Conglomerate with Pioneer Beds in South Queenstown area.

MT. READ VOLCANICS AND ASSOCIATED ROCKS

TYNDALL GROUP CORRELATES

- Volcaniclastic conglomerate
- Quartz-phyric tuff and lava

CENTRAL BELT VOLCANICS

- Feldspar-phyric ash-flows, agglomerates, tuffs
- Feldspar-phyric lavas and intrusives
- Shale-tuff unit in Conglomerate Creek
- Andesite intrusive
- Darwin Granite

WESTERN SEQUENCE AND CORRELATES

- Lynch Creek Basalts
- Shale-greywacke sequences
- Miners Ridge Sandstone
- Quartz-phyric volcanics and vitric tuffs
- Tholeiitic basalts at Miners Ridge
- Quartz-Feldspar porphyry intrusives

