

38  
(810.2) COAL EXPLORATION  
AREA EXEMPT FROM THE MINING ACT 1929  
E-W SECTION  
5387 000mN

4721 B

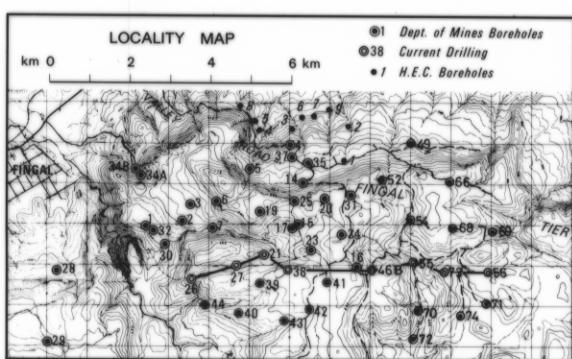
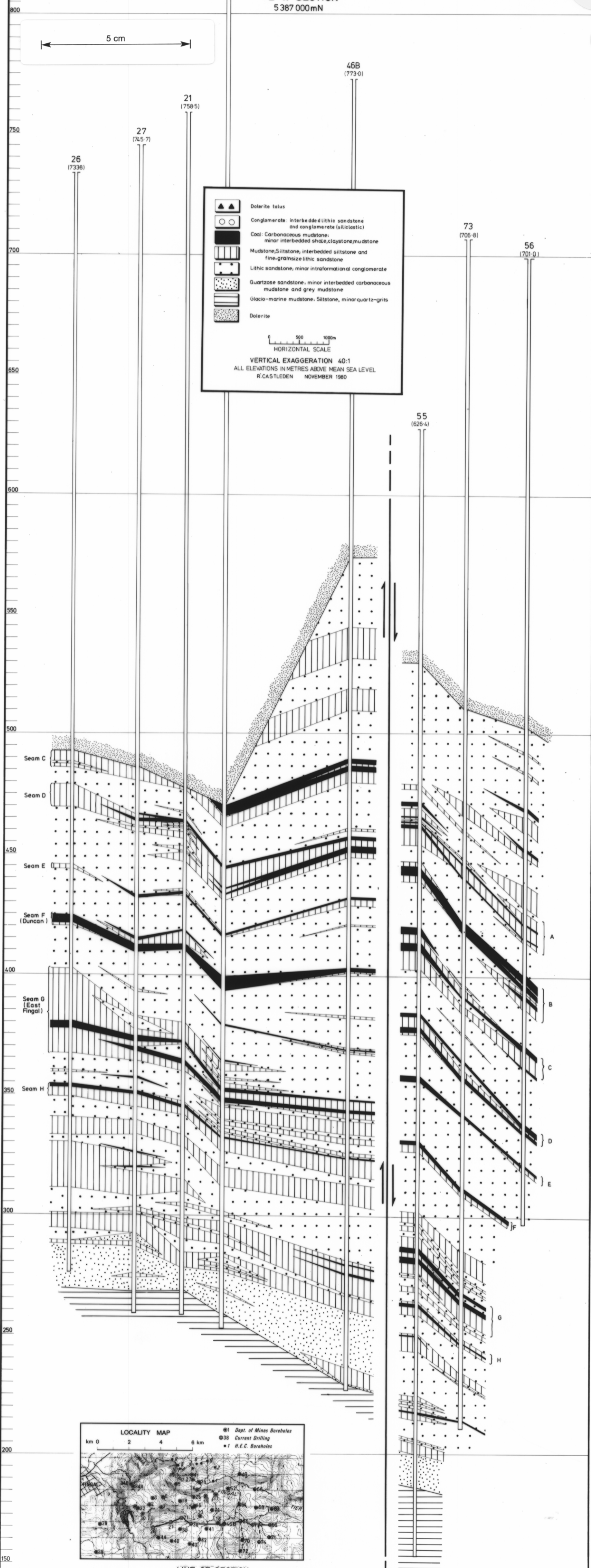
429

5 cm

|  |  |
|--|--|
|  | Dolerite talus   |
|  | Conglomerate: interbedded lithic sandstone and conglomerate (siliclastic)      |
|  | Coal: Carbonaceous mudstone; minor interbedded shale, claystone, mudstone      |
|  | Mudstone, Siltstone, interbedded siltstone and fine-grained lithic sandstone   |
|  | Lithic sandstone, minor intraformational conglomerate                          |
|  | Quartzose sandstone, minor interbedded carbonaceous mudstone and grey mudstone |
|  | Glacio-marine mudstone, Siltstone, minor quartz-grits                          |
|  | Dolerite   |

0 500 1000m  
HORIZONTAL SCALE

VERTICAL EXAGGERATION 40:1  
ALL ELEVATIONS IN METRES ABOVE MEAN SEA LEVEL  
R. CASTLEDEN NOVEMBER 1980



LINE OF SECTION

MAY 1984

4721/2

FIGURE 88

B