

COAL EXPLORATION
AREA EXEMPT FROM THE MINING ACT 1929
N-S SECTION

4721H

586 700 mE

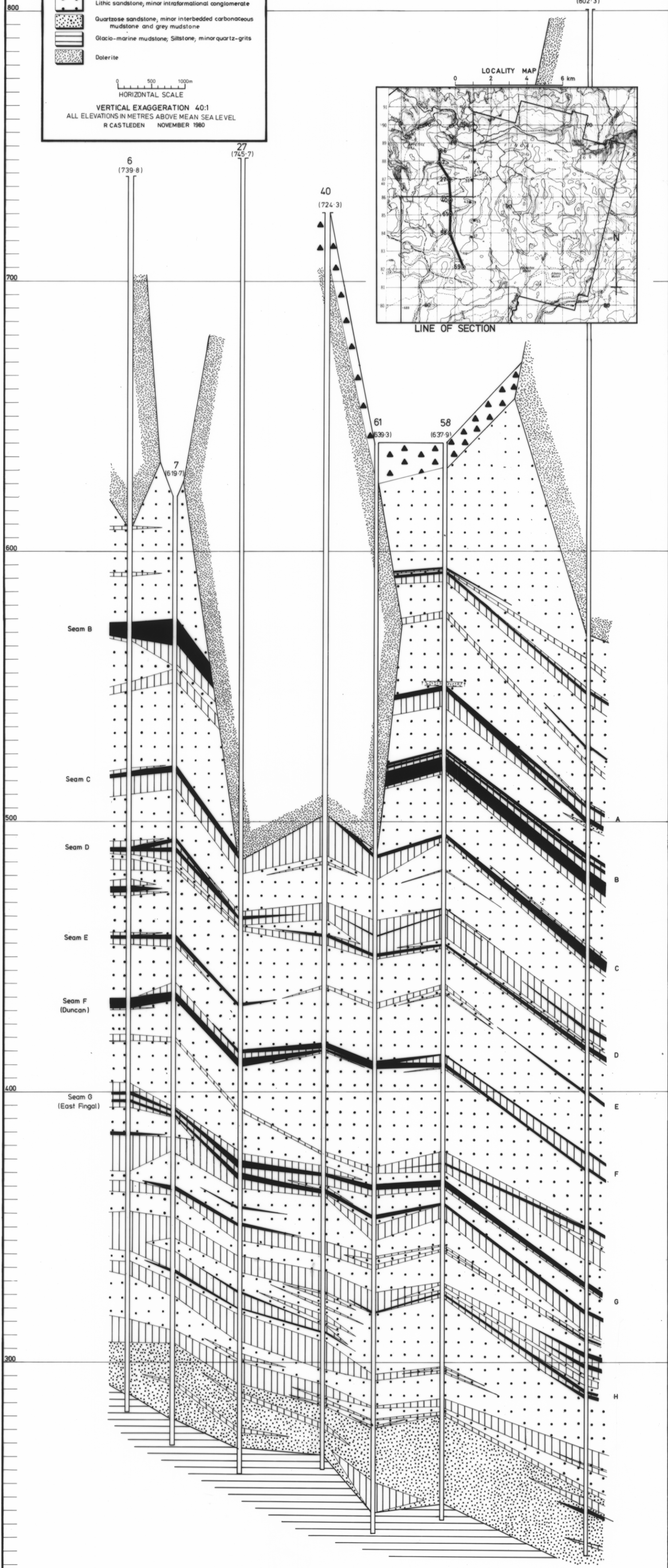
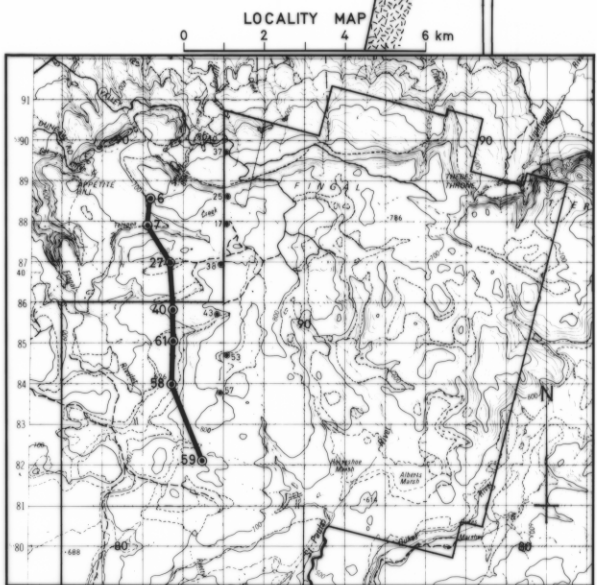
59
(802.3)

5 cm

	Dolerite talus
	Conglomerate; interbedded lithic sandstone and conglomerate (siliclastic)
	Coal; Carbonaceous mudstone; minor interbedded shale, claystone, mudstone
	Mudstone; Siltstone, interbedded siltstone and fine-grained lithic sandstone
	Lithic sandstone, minor intraformational conglomerate
	Quartzose sandstone, minor interbedded carbonaceous mudstone and grey mudstone
	Glacio-marine mudstone; Siltstone, minor quartz-grits
	Dolerite

0 500 1000m
HORIZONTAL SCALE

VERTICAL EXAGGERATION 40:1
ALL ELEVATIONS IN METRES ABOVE MEAN SEA LEVEL
R CASTLEDEN NOVEMBER 1980



Corrected May 1984

4721/B

FIGURE 92

H