

4721J

COAL EXPLORATION
AREA EXEMPT FROM THE MINING ACT 1929
N-S SECTION

589 000 mE

436

5 cm

31
(829.6)

24
(830.8)

41
(812.4)

42
(813.1)

53
(795.1)

57
(803.4)

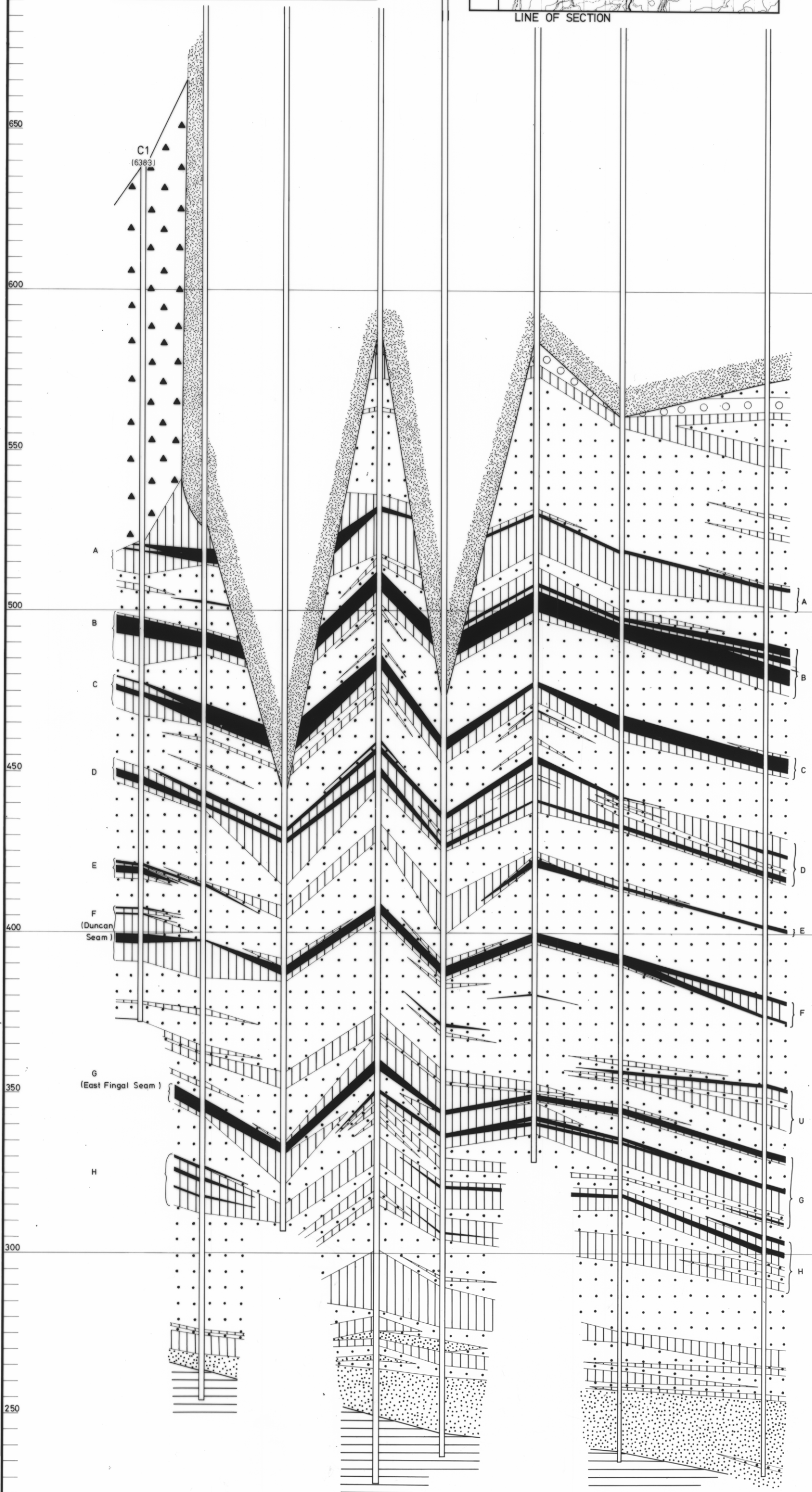
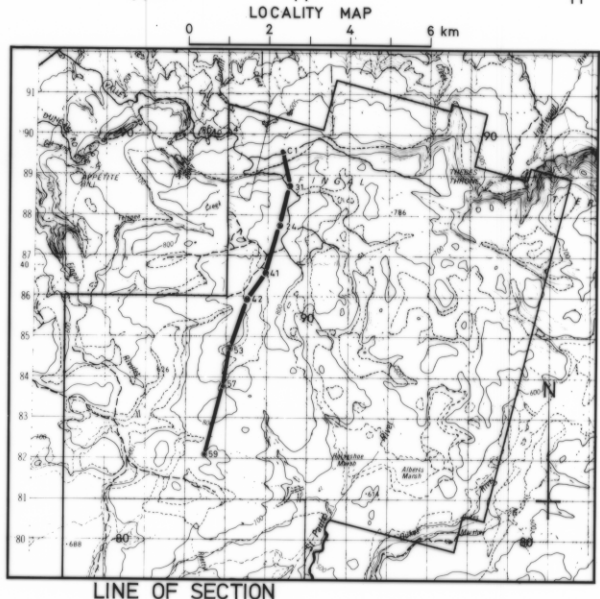
59
(802.3)

Legend:

- Dolerite talus
- Conglomerate, interbedded lithic sandstone and conglomerate (siliclastic)
- Coal; Carbonaceous mudstone; minor interbedded shale, claystone, mudstone
- Mudstone, Siltstone, interbedded siltstone and fine grained lithic sandstone
- Lithic sandstone, minor intraformational conglomerate
- Quartzose sandstone, minor interbedded carbonaceous mudstone and grey mudstone
- Glacio-marine mudstone, Siltstone, minor quartz-grits
- Dolerite

Scale:
0 500 1000m
HORIZONTAL SCALE

VERTICAL EXAGGERATION 40:1
ALL ELEVATIONS IN METRES ABOVE MEAN SEA LEVEL
R. CASTLEDEN NOVEMBER 1980



MAY 1984

4721/9

FIGURE 94

J