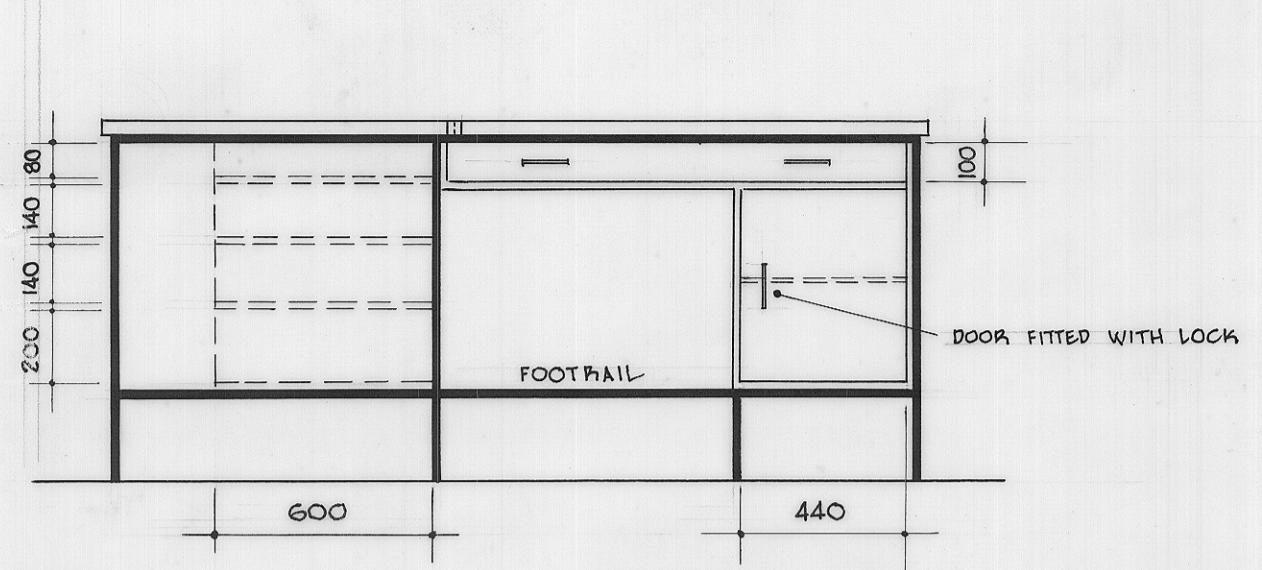
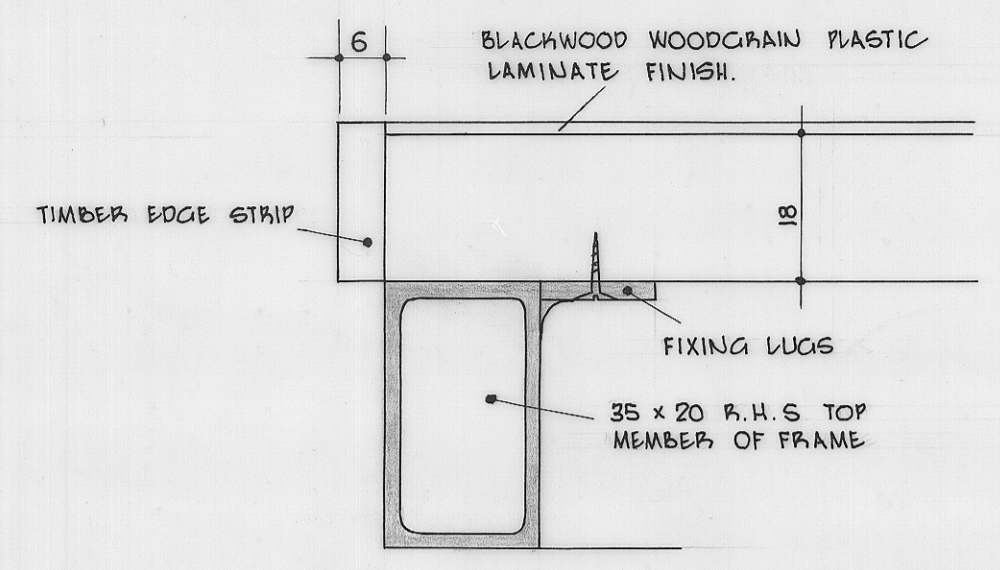


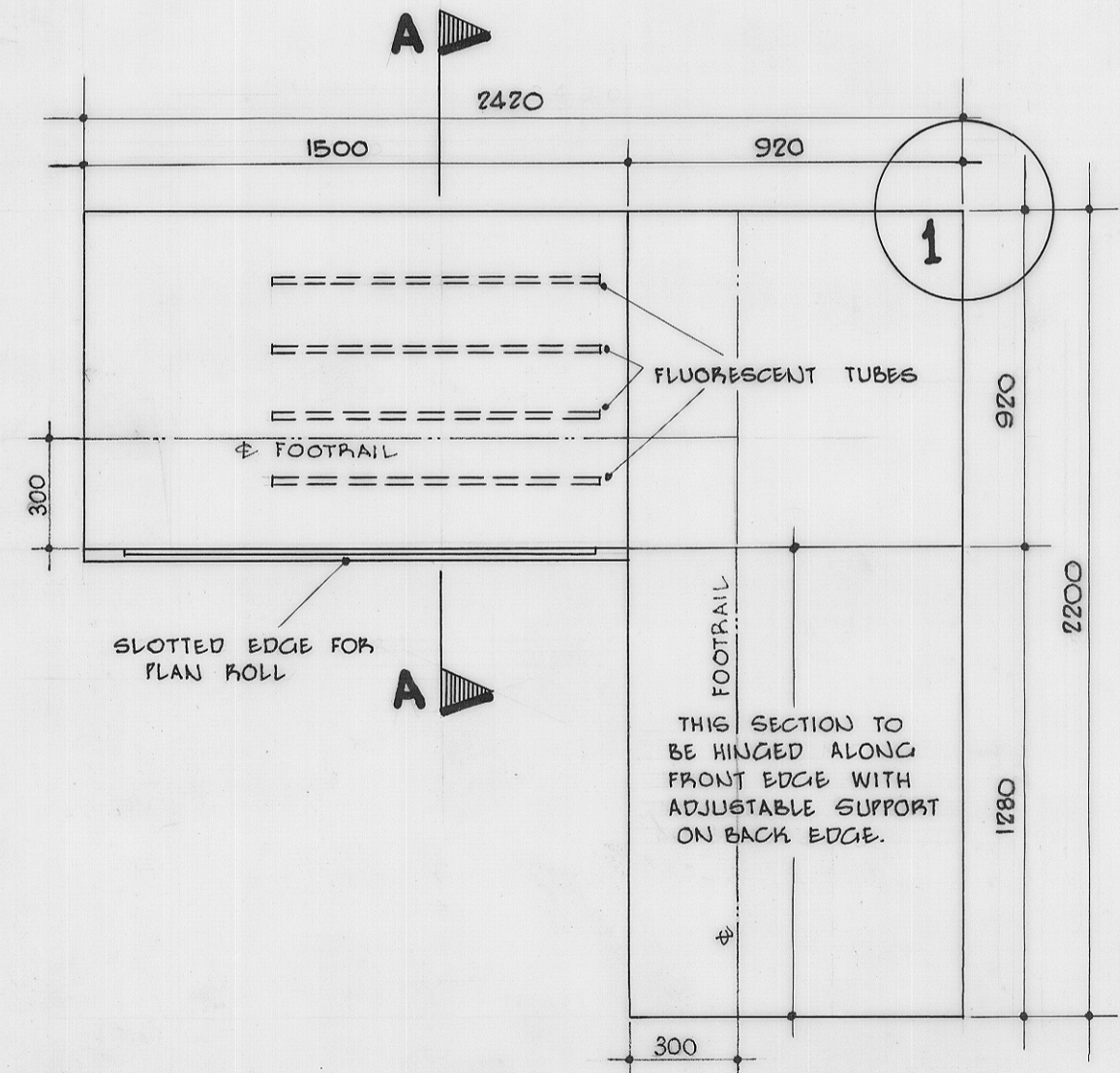
ELEVATION 1



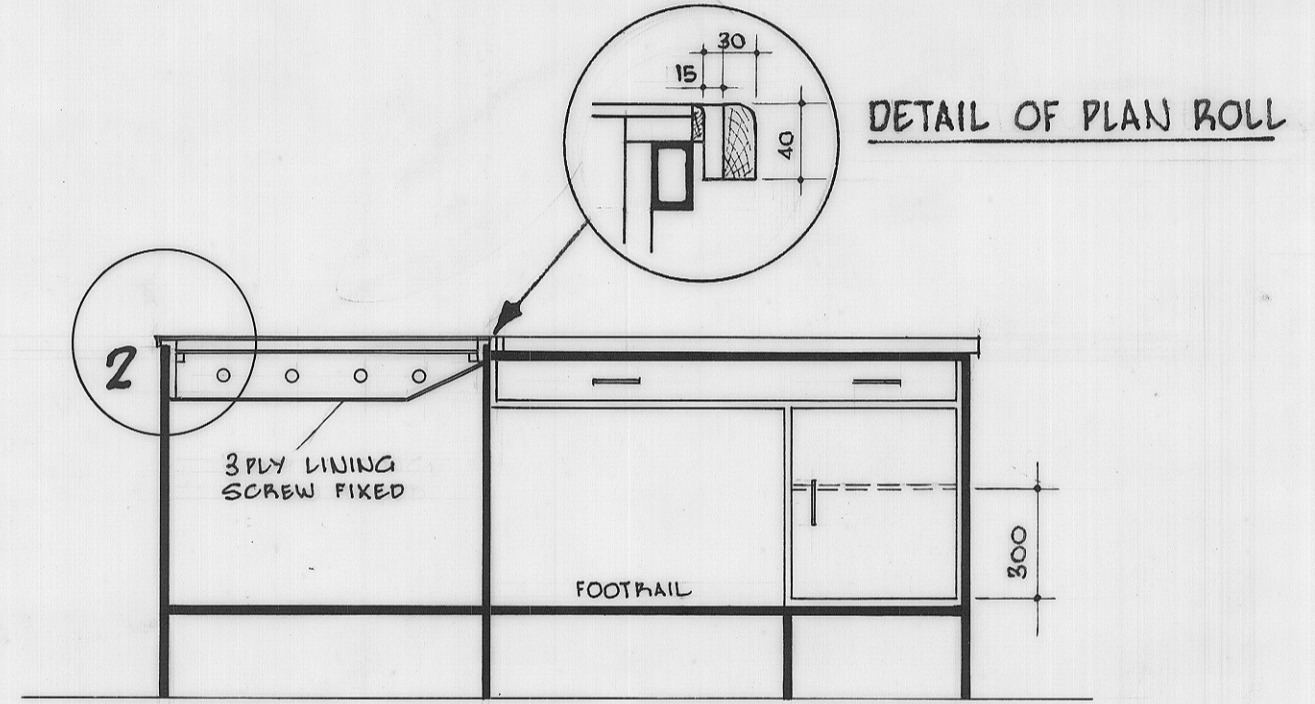
ELEVATION 2



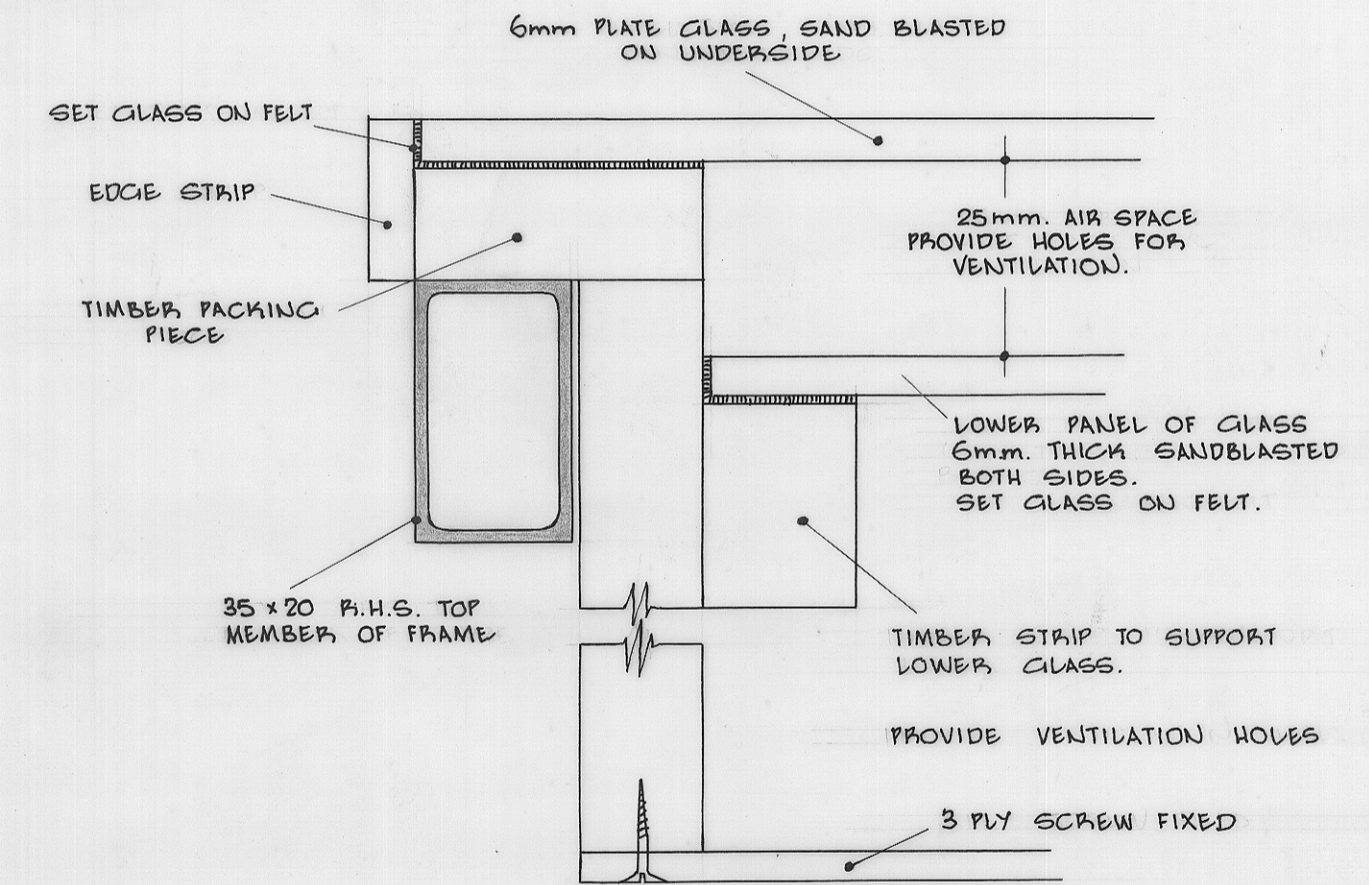
DETAIL AT 1



PLAN



SECTION A-A



DETAIL AT 2

- NOTE:**
- 4 - 900mm 30w. FLUORESCENT TUBES EACH OPERATED BY INDIVIDUAL SWITCH.
 - FAN TO BE PROVIDED TO LIGHT WELL WITH ADEQUATE VENTILATION HOLES.
 - INTERIOR OF LIGHT WELL TO HAVE TWO COATS OF FLAT WHITE ENAMEL.
 - TILT TOP SECTION TO BE SUITABLY REINFORCED TO ELIMINATE BENDING.
 - ALL EXPOSED TIMBER SURFACES COVERED WITH BLACKWOOD WOODGRAIN PLASTIC LAMINATE.
 - SATIN MATT DRAWER PULLS
 - BUILDER TO SUPPLY SUITABLE METHOD OF FIXING LIGHT TABLE & DESK UNITS WHEN INSTALLED.

5 cm

4729