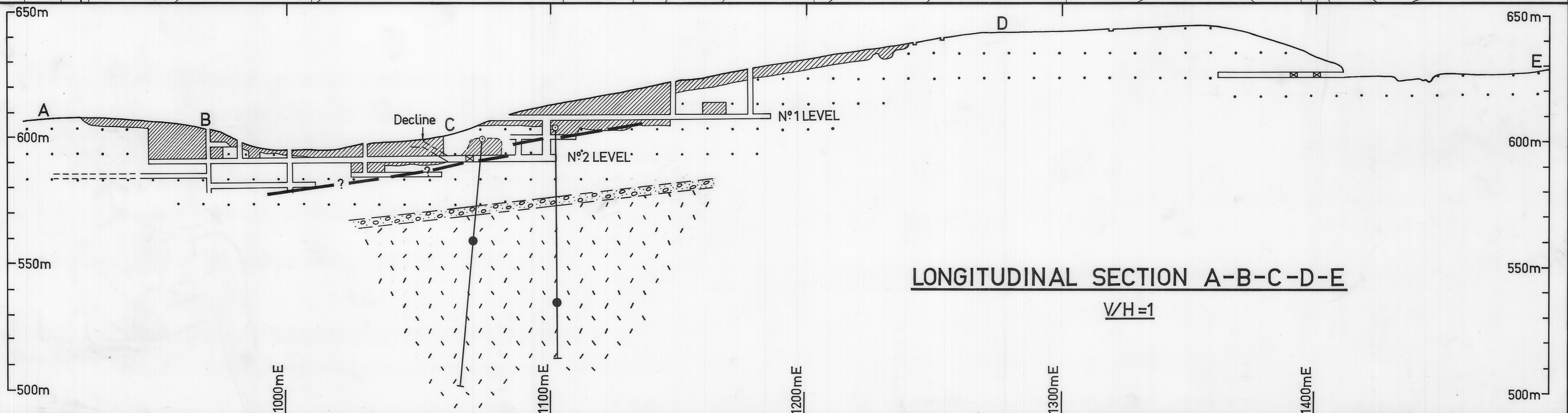
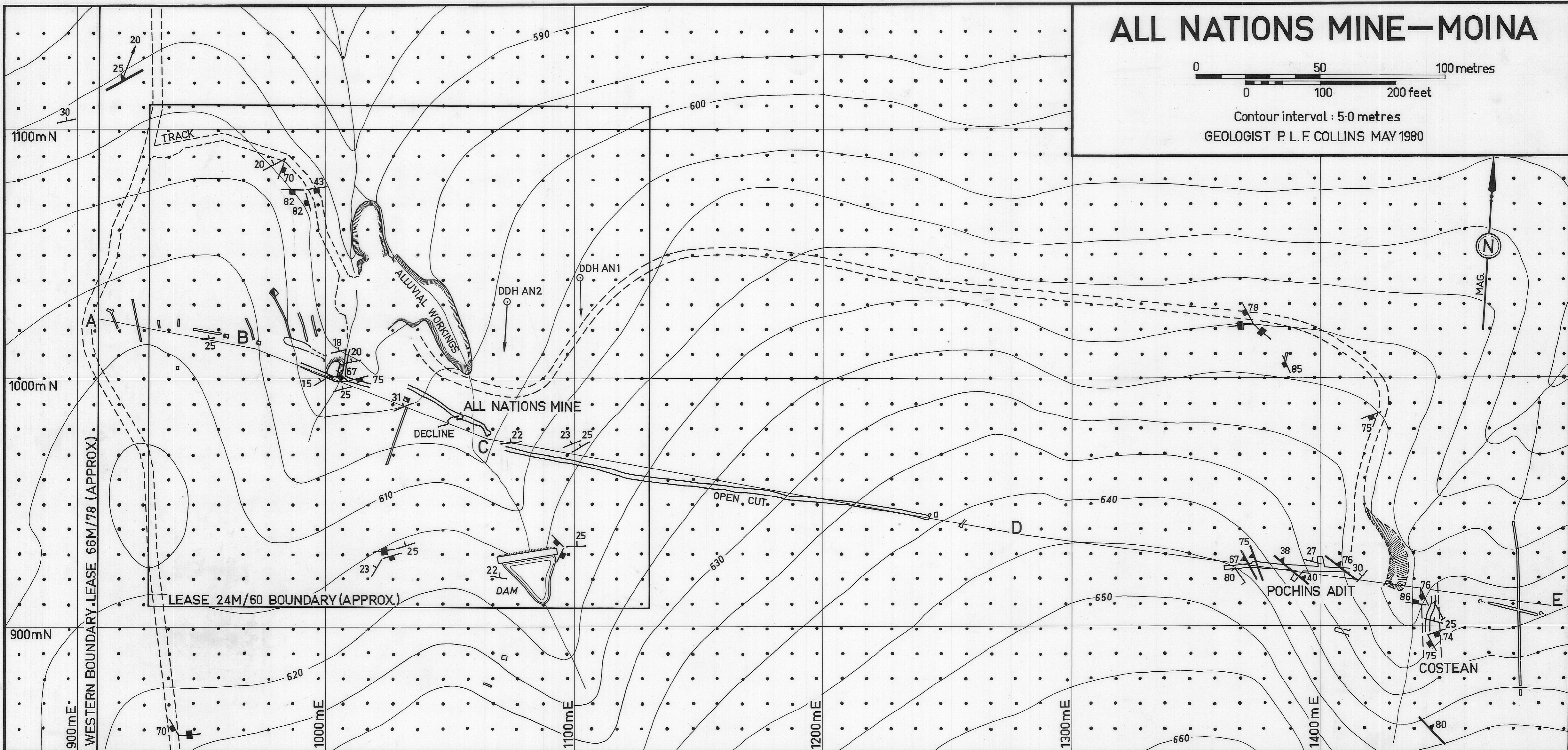


5 cm

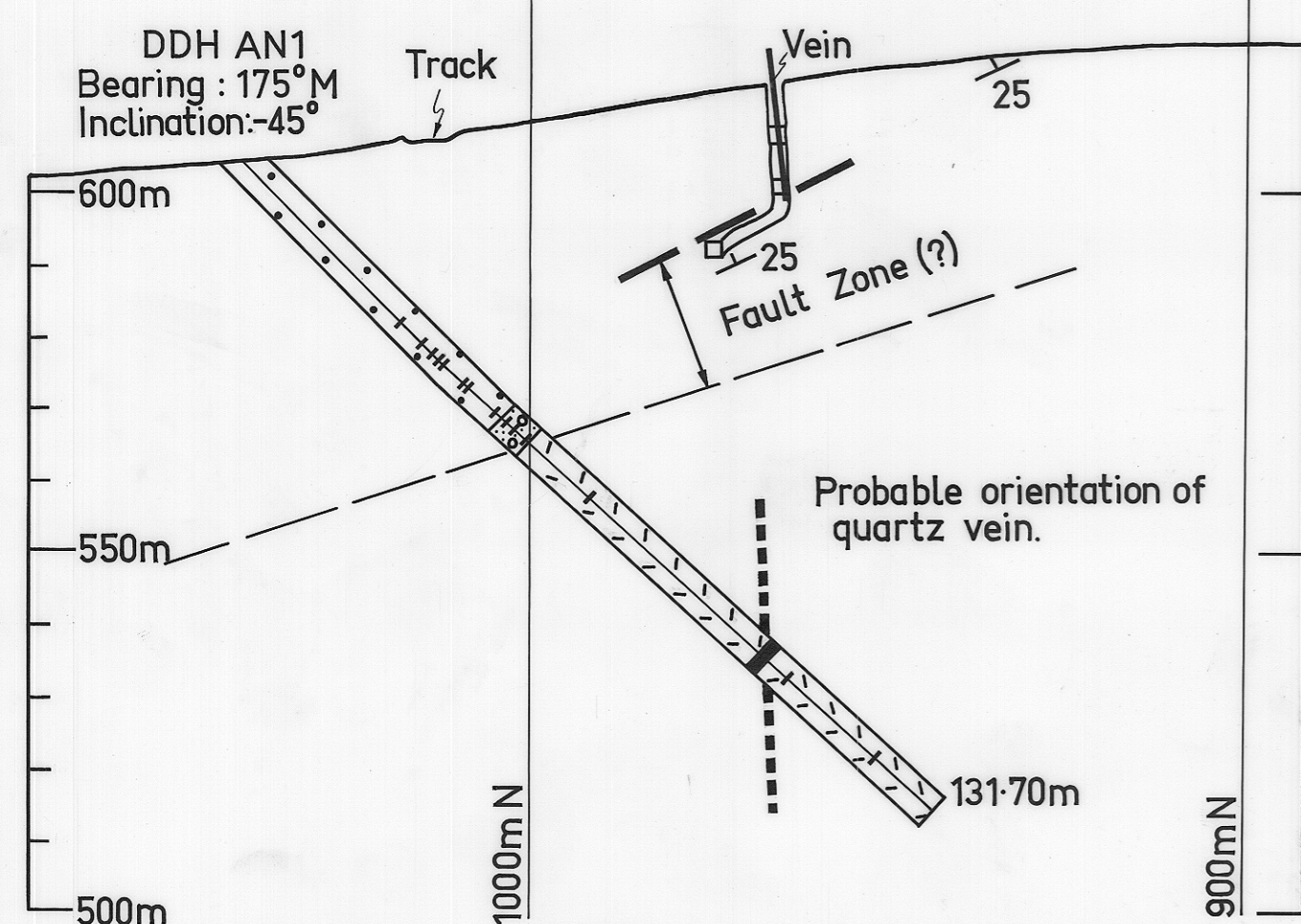
# ALL NATIONS MINE—MOINA

0 50 100 metres  
0 100 200 feet  
Contour interval: 5.0 metres  
GEOLOGIST P. L. F. COLLINS MAY 1980

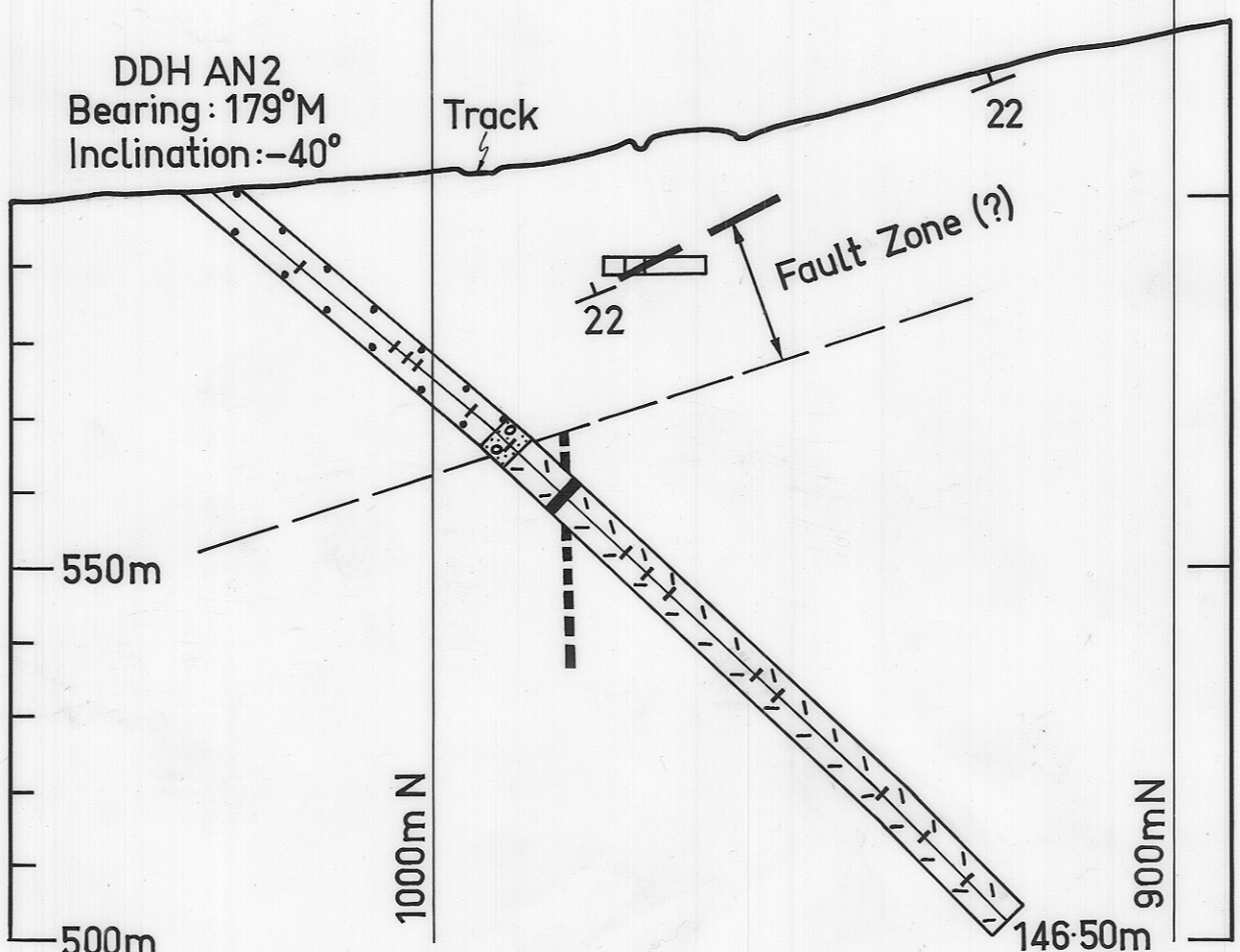


### D.D.H. SECTIONS

#### SECTION 1100mE

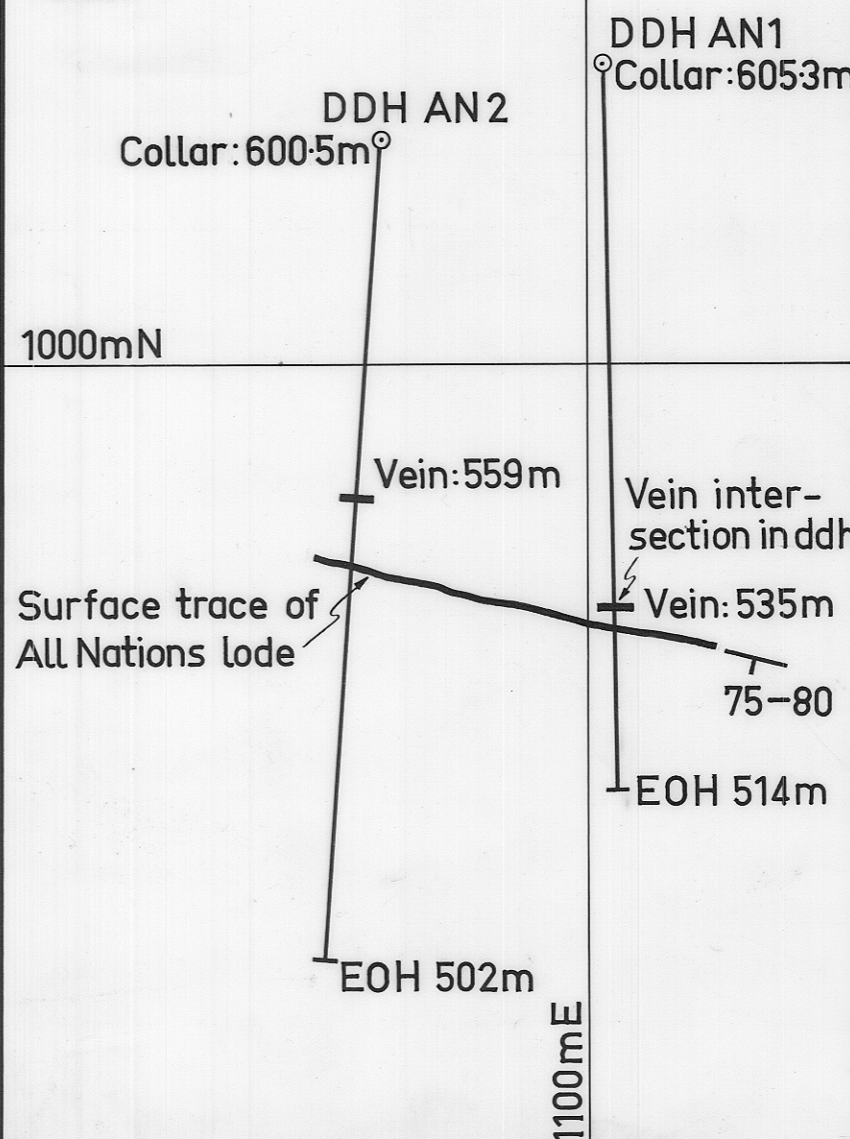


#### SECTION 1070mE



### PLAN

Showing relative positions of surface quartz lode & quartz vein intersections in diamond drill holes.



### LEGEND

- ORDOVICIAN**
- MOINA SANDSTONE (siltstone, quartz sandstone, quartzite, grit, fine pebble conglomerate.)
  - ROLAND CONGLOMERATE (coarse pebble conglomerate, minor quartz sandstone.)
- CAMBRIAN**
- BULL CREEK FM. (quartz- & quartz-feldspar-porphry.)
- Geological boundary.  
Bedding.  
Joint, vertical joint.  
Cleavage, vertical cleavage.  
Fault, Slickenside.  
Quartz vein  
Fault  
DDH Intersection
- NOTES:** Contours based on assigned level of 597.0 metres at the base of the main shaft. Grid basis is south-west corner of main shaft with assigned co-ordinates 1000mE, 1000mN. Map & longitudinal section based on Nixon (1954), plan numbers 1306 & 1307.

Drawn: H. Mackinnon Dec. 1980