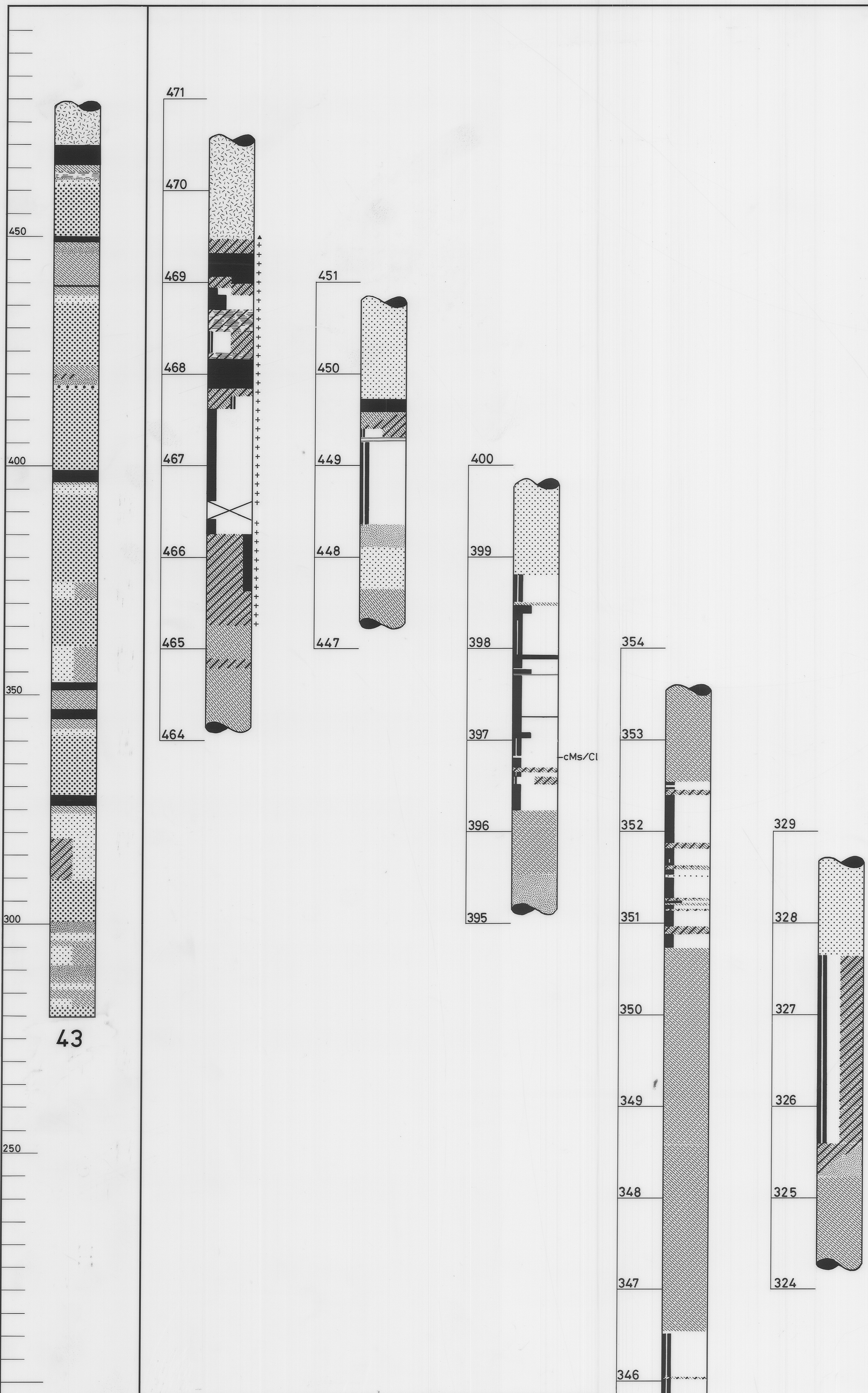
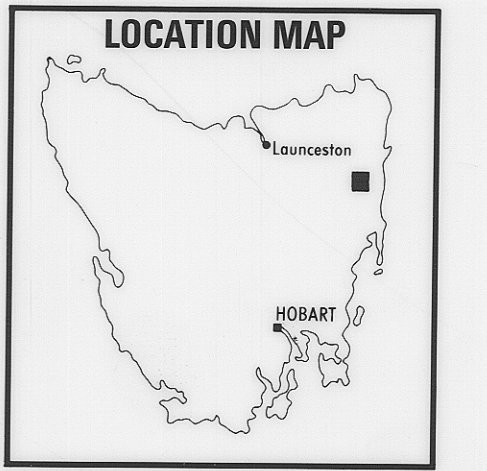


5 cm

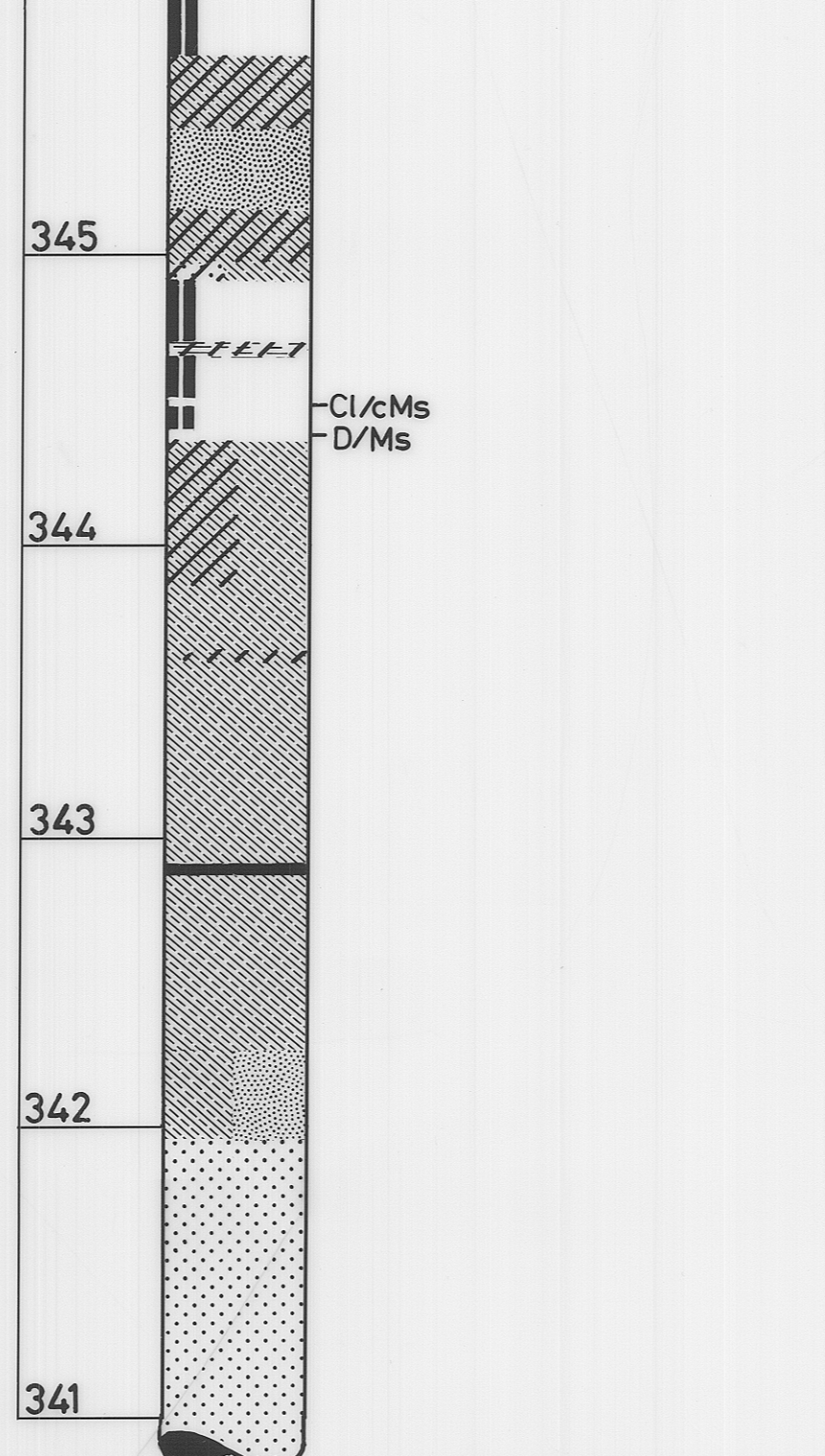
GRAPHIC LOG FOR ENLARGEMENT

- B COAL — bright (greater than 90% bright)
  - Db COAL — mainly dull with abundant bright bands (over 10% and up to and including 40% bright)
  - Dmb COAL — dull with minor bright bands (over 1% and up to and including 10% bright)
  - D COAL — dull and heavy dull (up to and including 1% bright)
  - W COAL — weathered
  - COAL — heat altered
  - c CARBONACEOUS UNIT
  - Sh SHALE
  - Cl CLAYSTONE
  - Ms MUDSTONE
  - Sl SILTSTONE
  - Ss SANDSTONE
  - Cgl CONGLOMERATE
  - Tf TUFF
  - Ig DOLERITE
  - Ms|Sh INTERBEDDED AND INTERBANDED UNITS (e.g. Mudstone and Shale)
  - Ms/Sh LAMINATED UNITS (e.g. Mudstone and Shale Laminite)
  - Cl Unit too small to use symbol (e.g. claystone at level of intercept)
  - Breccia, (shear zone, fault zone?)
- (Adapted from Australian Standard Symbols Ref. AS K183-1970)



GRAPHIC LOG

- QUATERNARY**
  - Dolerite talus (clay, sand, gravel, boulders)
  - Lithic sandstone — fine to fine medium grain size
  - Lithic sandstone — medium to coarse grain size
  - Siltstone
  - Mudstone, claystone
  - Shale
- TRIASSIC (UPPER PARMEENER SUPER-GROUP)**
  - Carbonaceous unit (e.g. carbonaceous mudstone)
  - Coal traces, coal veins, coal bands, carbonaceous laminae
  - Thin beds shown in true stratigraphic position within another unit (e.g. mudstone band within a sandstone)
  - Interbedded units; beds generally > 1 cm in thickness (e.g. interbedded sandstone and siltstone)
  - Interlaminated units; beds generally < 1 cm in thickness (e.g. siltstone and mudstone laminite)
  - Clay-pellet or mud-pellet conglomerate
  - Quartz pebble conglomerate
  - Coal
  - Quartzose sandstone — fine to coarse grain size
- PERMIAN (LOWER PARMEENER SUPER-GROUP)**
  - Mudstone etc. with scattered grit
  - Limestone
  - Conglomerate
- IGNEOUS ROCKS**
  - JURASSIC**
    - Dolerite
  - Unit showing contact thermal metamorphism
  - Breccia, (shear zone, fault zone?)
  - Weathered unit
  - No core recovered



TASMANIA DEPARTMENT OF MINES  
AREA EXEMPT FROM THE MINING ACT 1929

GRAPHIC LOG OF COAL SEAM INTERSECTIONS  
ENLARGED 1:20  
DIAMOND DRILL HOLE No 43

ALL LEVELS IN METRES ABOVE MEAN SEA LEVEL  
R.H. CASTLEDEN & C.A. BACON DEC1980