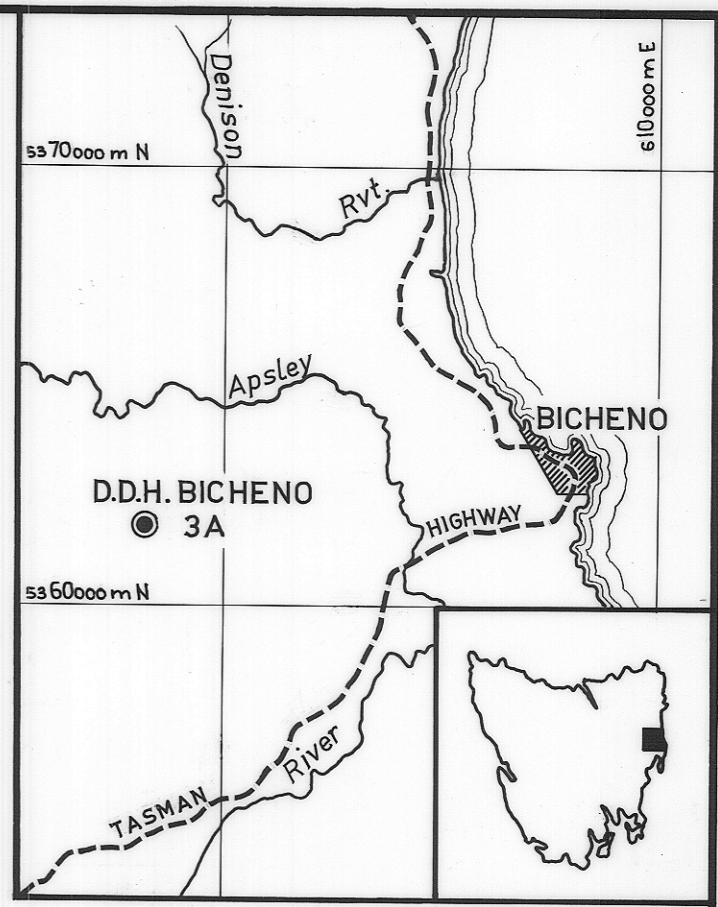
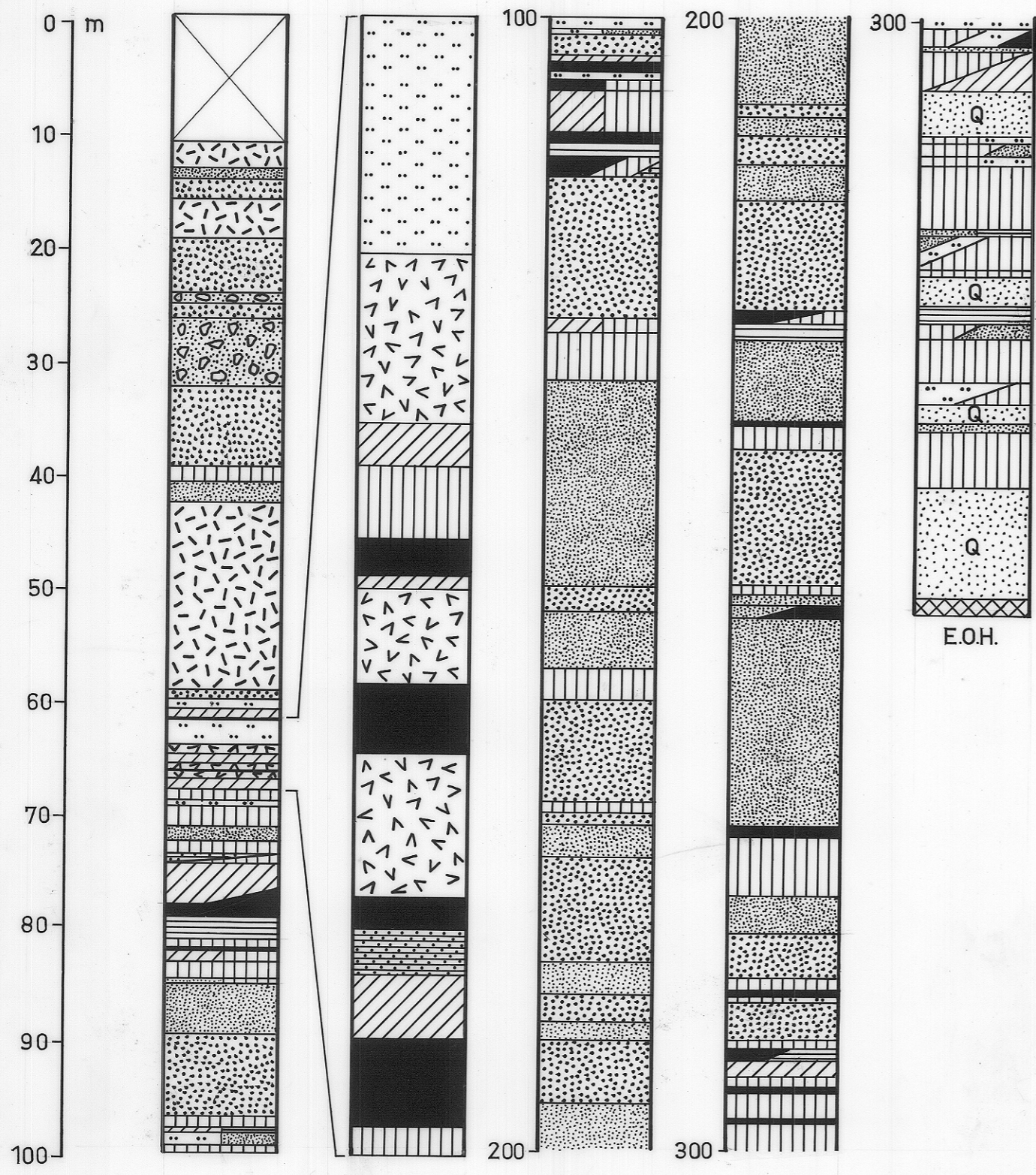


4783

555

5 cm



E.O.H.

- UPPER PARMEENER SUPERGROUP
- Lithic sandstone - fine
 - Lithic sandstone - coarse
 - Siltstone
 - Mudstone
 - Carbonaceous mudstone
 - Clay
 - Shale
 - Conglomerate
 - Coal
 - Quartzose sandstone
- LOWER PARMEENER SUPERGROUP
- Mudstone with grits
- IGNEOUS ROCKS
- Dolerite - JURASSIC
 - Pyroclastic - TRIASSIC
- No core recovery