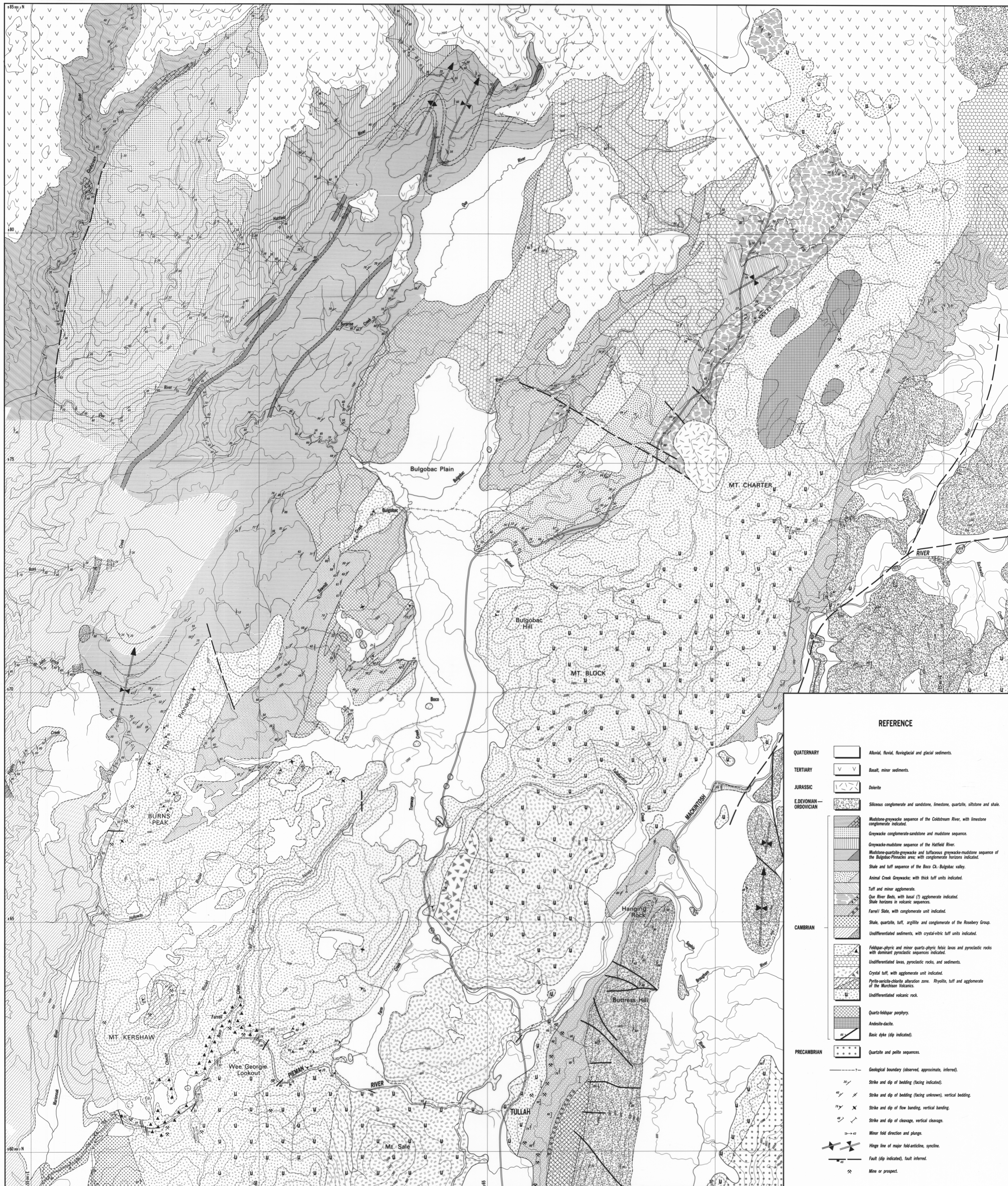


5 cm

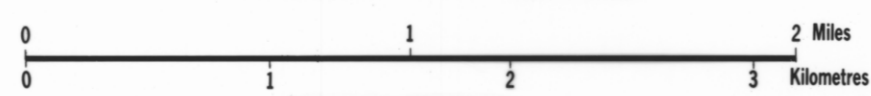


REFERENCE

- QUATERNARY Alluvial, fluvial, fluvio-glacial and glacial sediments.
- TERTIARY Basalt, minor sediments.
- JURASSIC Dolomite.
- E.DEVONIAN—
ORDOVICIAN Siliceous conglomerate and sandstone, limestone, quartzite, siltstone and shale.
- Madstone-greywacke sequence of the Coldstream River, with limestone conglomerate indicated.
- Greywacke conglomerate-sandstone and mudstone sequence.
- Greywacke-mudstone sequence of the Hatfield River.
- Madstone-quartzite-greywacke and tuffaceous greywacke-mudstone sequence of the Bulgobac-Pinnacles area, with conglomerate horizons indicated.
- Shale and tuff sequence of the Boco Cr. Bulgobac valley.
- Animal Creek Greywacke, with thick tuff units indicated.
- Tuff and minor agglomerate.
- Que River Beds, with basal (?) agglomerate indicated. Shale horizons in volcanic sequences.
- Farrell Slate, with conglomerate unit indicated.
- CAMBRIAN Shale, quartzite, tuff, argillite and conglomerate of the Rosebery Group.
- Undifferentiated sediments, with crystal-vitric tuff units indicated.
- Feldspar-phyric and minor quartz-phyric felsic lavas and pyroclastic rocks with dominant pyroclastic sequences indicated.
- Undifferentiated lavas, pyroclastic rocks, and sediments.
- Crystal tuff, with agglomerate unit indicated.
- Pyrite-sericite-chlorite alteration zone. Rhyolite, tuff and agglomerate of the Murchison Volcanics.
- Undifferentiated volcanic rock.
- Quartz-feldspar porphyry.
- Andesite-dacite.
- Basic dyke (dip indicated).
- PRECAMBRIAN Quartzite and pelite sequences.
- Geological boundary (observed, approximate, inferred).
- Strike and dip of bedding (facing indicated).
- Strike and dip of bedding (facing unknown), vertical bedding.
- Strike and dip of flow banding, vertical banding.
- Strike and dip of cleavage, vertical cleavage.
- Minor fold direction and plunge.
- Hinge line of major fold-anticline, syncline.
- Fault (dip indicated), fault inferred.
- Mine or prospect.

GEOLOGY OF THE PINNACLES—QUE RIVER AREA

P. L. F. COLLINS MAY 1980



Map compiled by P. L. F. Collins from original mapping by P. L. F. Collins and from Barton et al. (1956), and additional unpublished mapping by W. B. Anderson, C. Barton, S. I. Green, A. S. Gullin, B. Marshall, W. L. Matthews and Rio Tinto Australia Exploration.

Cartography by—P. B. NANKIVELL