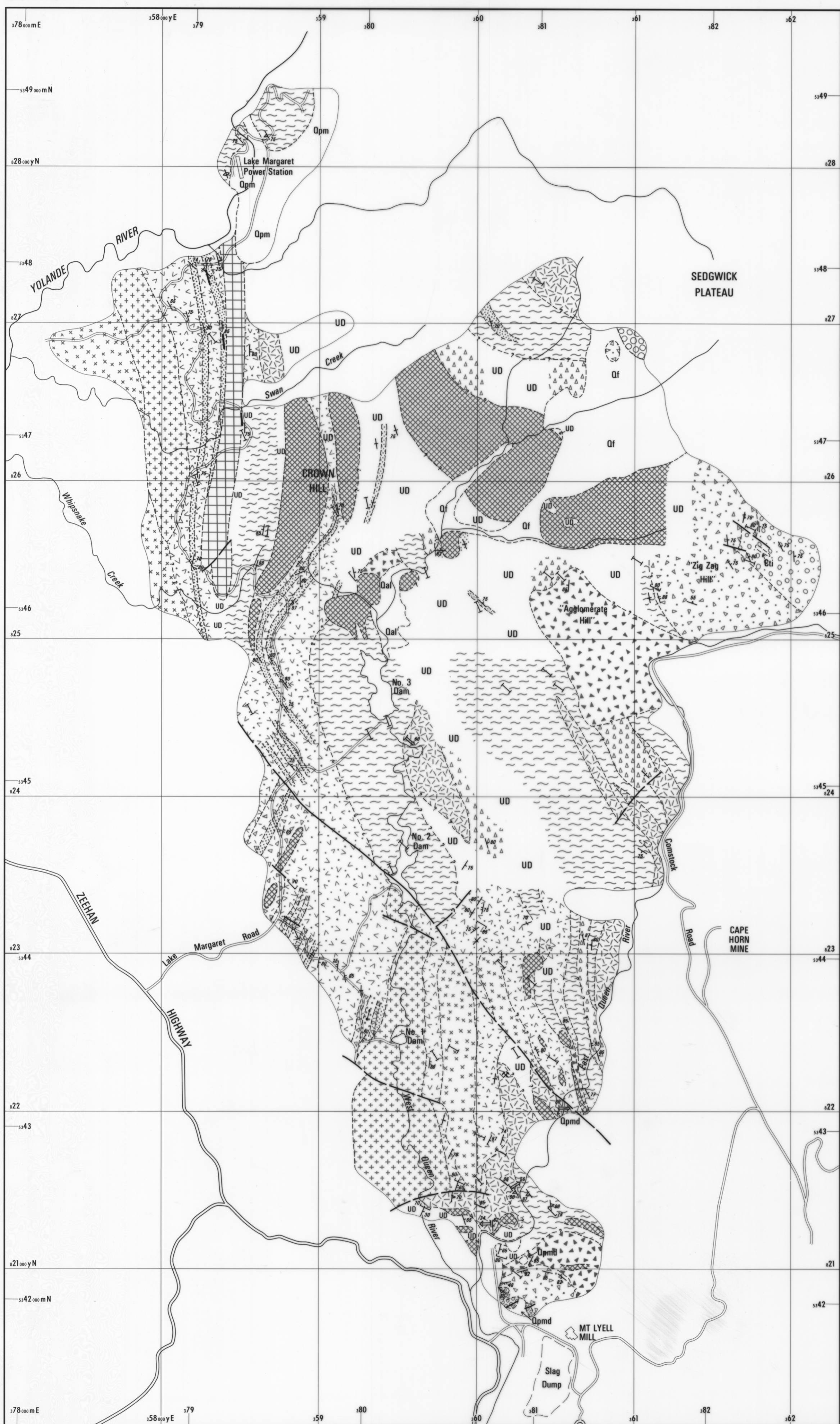


5 cm



QUATERNARY

- Qal Alluvium
- Qf Bouldery fan deposits & scree — mostly Owen Conglomerate detritus
- Qpm Pleistocene moraine Lake Margaret area.
- Qpmd Pleistocene moraine with Jurassic dolerite clasts in some areas, lower East Queen River

? CRETACEOUS

- Lamprophyre dyke

LATE CAMBRIAN — EARLY ORDOVICIAN

- Owen Conglomerate, with upper Pioneer Beds correlate in Mill area

CAMBRIAN — MT READ VOLCANICS & ASSOCIATED ROCKS

- Volcaniclastic conglomerate & sandstone, with minor shale, tuff & ignimbrite (Eti).
- Comstock Tuff — banded tuff, agglomerate, breccia, shale.
- Andesitic to basaltic volcanics — mainly breccias & tuffs with minor lavas & possible intrusives. Bedded in places.
- Mainly eutaxitic felsic tuff & agglomerate with flattened pumice clasts — probably mainly ash-flows.
- Feldspar porphyry — massive, flow-banded and/or columnar jointed — probably includes lava flows, densely welded parts of ash-flows, minor intrusives. Rhyolite to rhyodacite composition.
- Well-bedded to faintly bedded tuff, agglomerate minor shale.
- Interbedded vitric tuff, shale, sandstone, crystal tuff, agglomerate — dominantly marine.
- Black shale & sandstone with interbedded tuff — mappable horizon.
- Quartz-rich sandstone.
- Agglomerate & breccia, usually with some sedimentary clasts — mainly mass-flow deposits.
- Quartz-feldspar crystal tuff, including coarse-grained porphyry-like units. Bedded in places.
- Undifferentiated volcanic rocks & minor sediments.
- Andesite-massive or brecciated plagioclase-pyroxene-hornblende porphyry.
- Dacitic quartz-feldspar-chlorite porphyry.
- Rhyodacitic quartz-feldspar-chlorite porphyry.
- Geological boundary approximate, inferred.
- Fault accurate, approximate, inferred.
- Bedding or primary layering, facing unknown, facing known, overturned.
- Flow-banding or compactional layering in volcanic rock.
- Plunge of columnar jointing in volcanic rock.
- Dominant cleavage, dipping, vertical.
- Direction of plunge of minor fold.
- Minor prospect.

Cartography by G. J. DICKENS 1981

**MT READ VOLCANICS & ASSOCIATED ROCKS —
LAKE MARGARET ROAD TO EAST QUEEN RIVER**

GEOLOGIST — K. D. CORBETT

SCALE 1 : 15840

