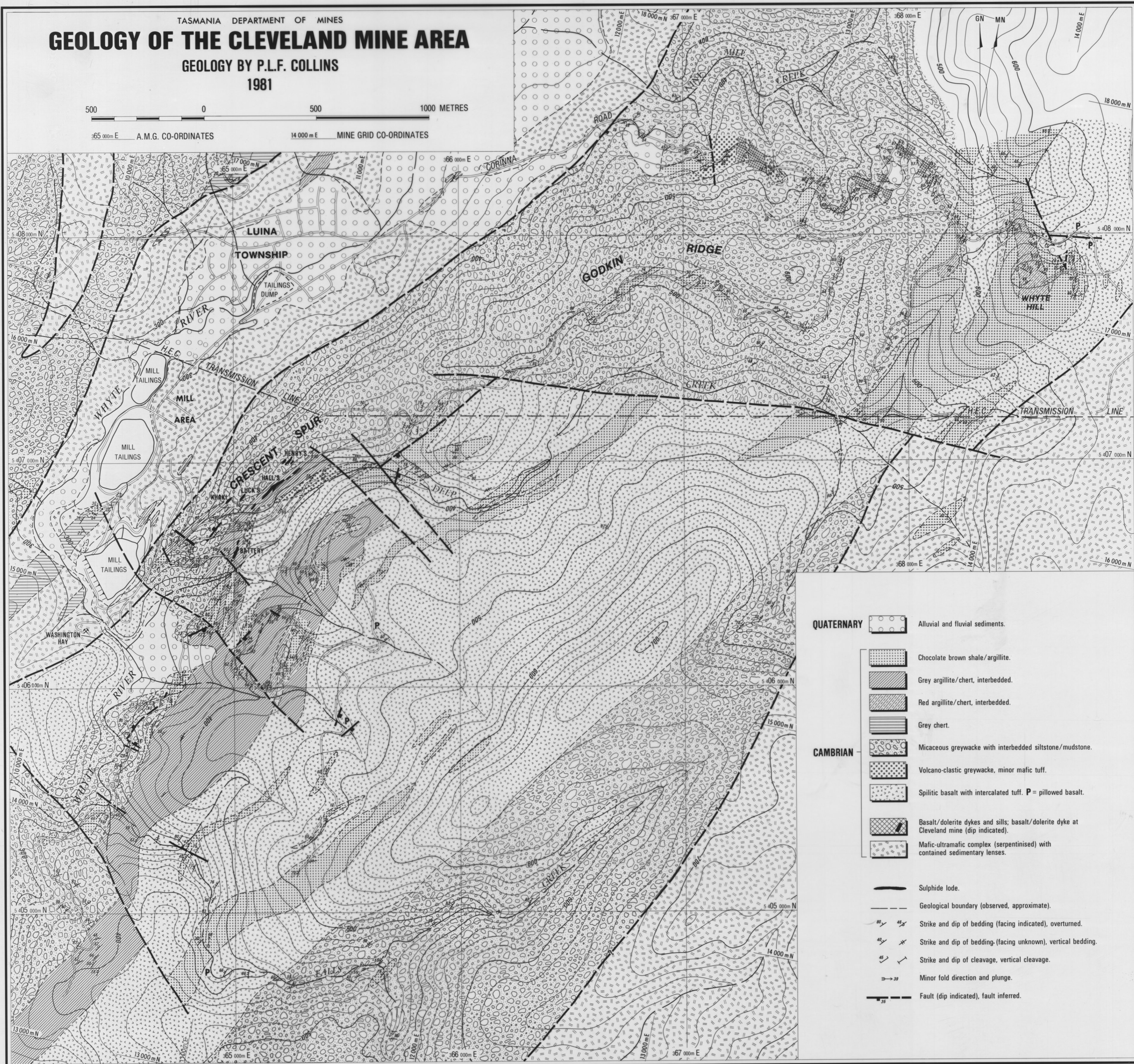


TASMANIA DEPARTMENT OF MINES
GEOLOGY OF THE CLEVELAND MINE AREA
 GEOLOGY BY P.L.F. COLLINS
 1981

500 0 500 1000 METRES
 365 000m E A.M.G. CO-ORDINATES 14 000m E MINE GRID CO-ORDINATES



- | | | |
|-------------------|--|--|
| QUATERNARY | | Alluvial and fluvial sediments. |
| | | Chocolate brown shale/argillite. |
| | | Grey argillite/chert, interbedded. |
| | | Red argillite/chert, interbedded. |
| | | Grey chert. |
| CAMBRIAN | | Micaceous greywacke with interbedded siltstone/mudstone. |
| | | Volcano-clastic greywacke, minor mafic tuff. |
| | | Spilitic basalt with intercalated tuff. P = pillowed basalt. |
| | | Basalt/dolerite dykes and sills; basalt/dolerite dyke at Cleveland mine (dip indicated). |
| | | Mafic-ultramafic complex (serpentinised) with contained sedimentary lenses. |
| | | Sulphide lode. |
| | | Geological boundary (observed, approximate). |
| | | Strike and dip of bedding (facing indicated), overturned. |
| | | Strike and dip of bedding (facing unknown), vertical bedding. |
| | | Strike and dip of cleavage, vertical cleavage. |
| | | Minor fold direction and plunge. |
| | | Fault (dip indicated), fault inferred. |