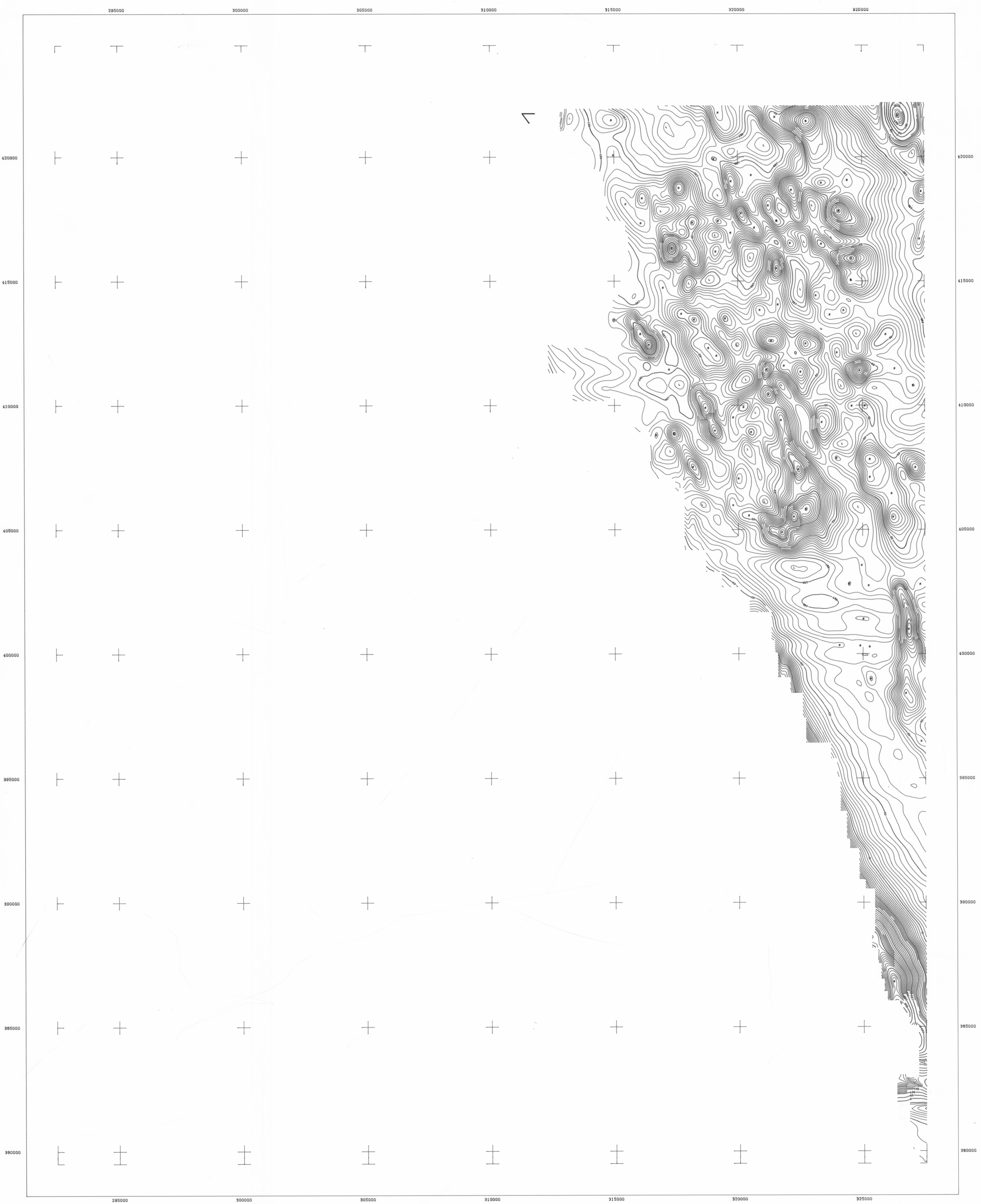

OVERSIZE
VERTICAL
NO. 2

4907A
SHEET 3

NOT FOR
REPRODUCTION

5 cm 63



Airborne Geophysical Survey and Compilation by

GEOEX
PTY LTD

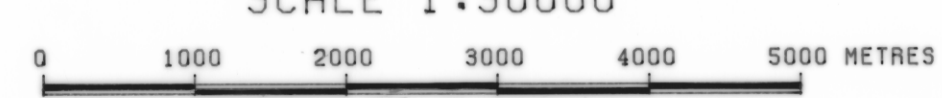
for

DEPARTMENT OF MINES TASMANIA

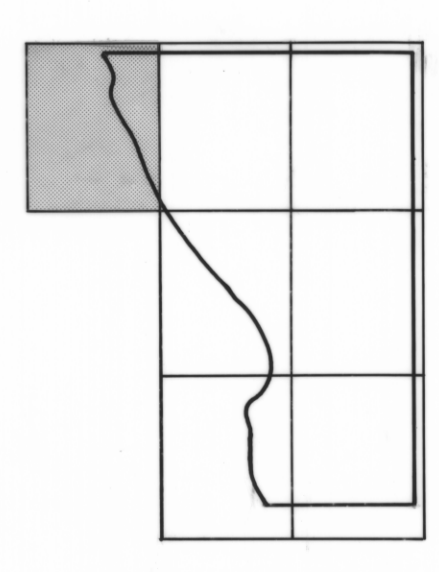
WEST COAST AREA TASMANIA

CONTOURS OF RESIDUAL TOTAL MAGNETIC INTENSITY

SCALE 1:50000



SURVEY LOCATION



SHEET INDEX

The data presented is the residual magnetic intensity, after subtracting the International Geomagnetic Reference Field from the observed Total Magnetic Intensity. The data was corrected for diurnal drift using a base station monitor at QUEENSTOWN Airfield, Latitude 42.077 S Longitude 145.328 E. The adopted value for this location was 62684 nT. Final detailed levelling of the data was performed using tie-line crossover analysis. A simple 3 point filter was applied to the data, which was then gridded and contoured using a 125m by 125m mesh cell.

EQUIPMENT SPECIFICATIONS
Cessna 441B Aircraft
SONDEX IGSS1 SYSTEM
0.1 nT MAGNETOMETER
256 CHANNEL SPECTROMETER
24 Litre Hal II DETECTOR
KING MARLO RADAR ALTIMETER
16mm Ground Tracking Camera
Industry Standard 9 track
32 Rpm Magnetic Tape
8 Channel Analogue Recorder
3 Channel Analogue Recorder
for Magnetometer

The nominal flight line separation was 500 metres, and the nominal tie-line bearing was 0 degrees. The observed mean sample interval in the flight direction was 0 metres, achieved with a nominal aircraft speed of 100 knots, and a reading interval of 0.8 seconds. The mean sensor height was 135 metres, using a towed bird configuration. The magnetometer accuracy is 1.0 nT, and the resolution 0.1 nT.

┌ SURVEY BOUNDARY

CONTOUR INTERVAL 5 nTesla

PROJECT NUMBER 81544 SURVEYED MAY 1981