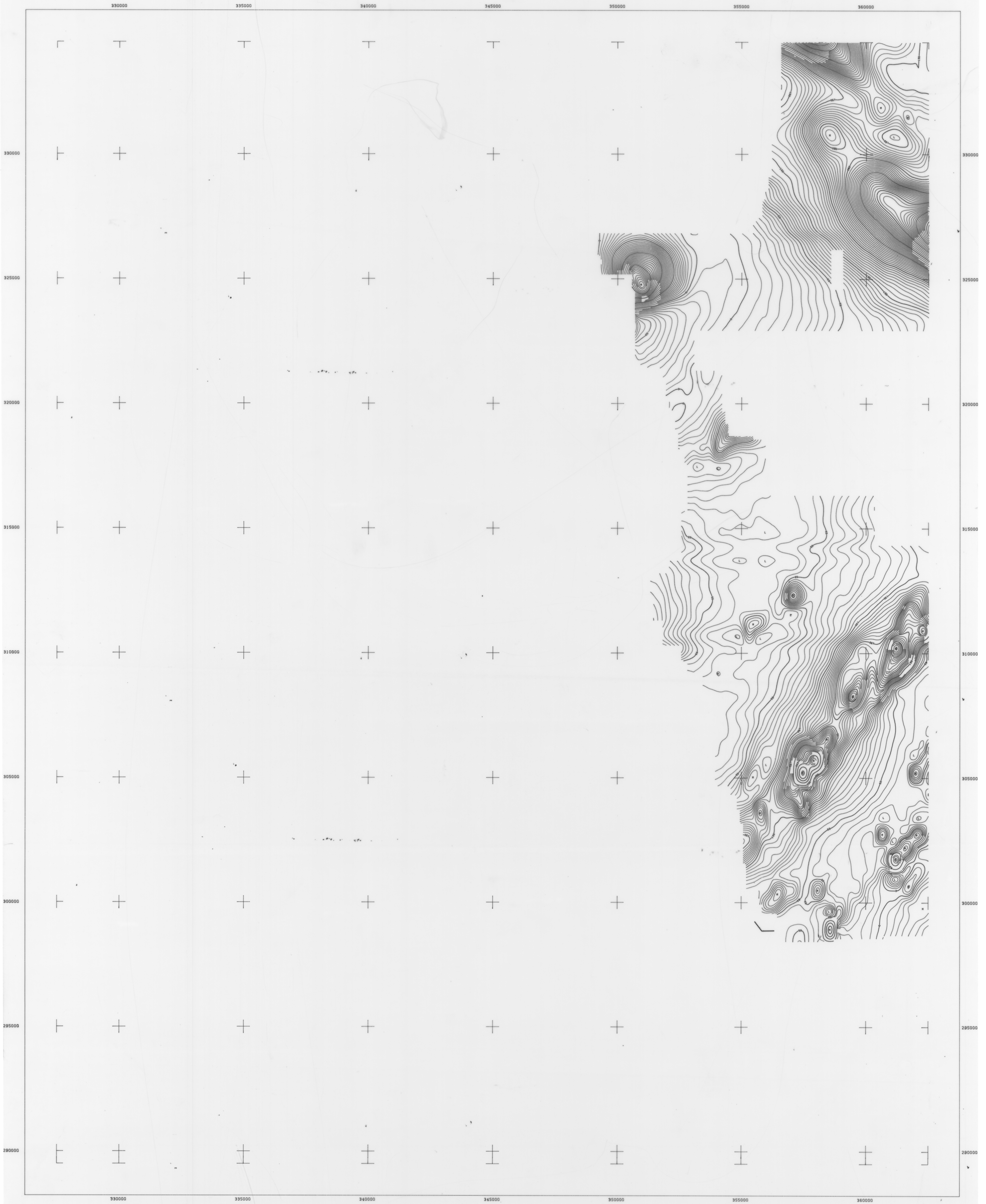


SHEET 4

5 cm



Airborne Geophysical Survey and Compilation by

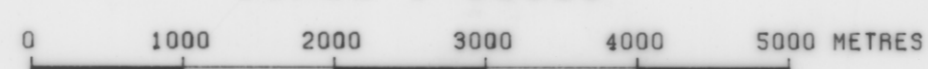


for

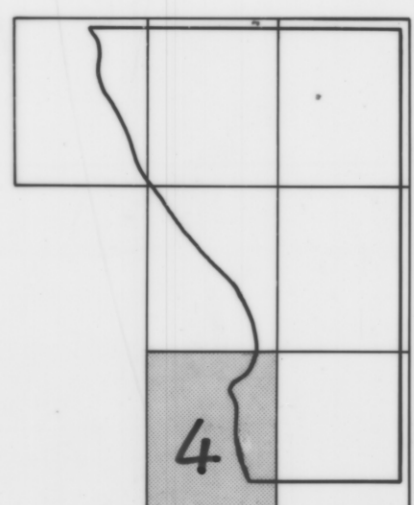
DEPARTMENT OF MINES TASMANIA
WEST COAST AREA TASMANIA

CONTOURS OF RESIDUAL TOTAL MAGNETIC INTENSITY

SCALE 1:50000



SURVEY LOCATION



SHEET INDEX

The data presented is the residual magnetic intensity, after subtracting the International Geomagnetic Reference Field from the observed Total Magnetic Intensity. The data was corrected for diurnal drift using a base station monitor at QUEENSTOWN Airfield, Latitude 42.077 S Longitude 145.529 E. Altitude 259 Metres. The sensor height was 3 metres. The adopted value for this location was 52584 nT. Final detailed levelling of the data was performed using tie-line crossover analysis. A simple 3 point filter was applied to the data, which was then gridded and contoured using a 125m by 125m mesh cell.

EQUIPMENT SPECIFICATIONS
Cessna 441BSE Aircraft
SONOTEK 10551 SYSTEM
0.1 nT MAGNETOMETER
256 CHANNEL SPECTROMETER
24 Line Nal T11 DETECTOR
KING KRAID RADAR ALTIMETER
18mm Ground Tracking Camera
Industry Standard 3 track
32 RPM Magnetic Tape
8 Channel Analogue Recorder
3 Channel Analogue Recorder
for Magnetometer

The nominal flight line separation was 500 metres, and the nominal track bearing was 0 degrees. The observed mean sample interval the flight direction was 0.8 seconds. The mean sensor was 135 metres, using a towed configuration. The magnetometer accuracy is 1.0 nT, and the resolution 0.1 nT.

SURVEY BOUNDARY

CONTOUR INTERVAL 5 nTesla

PROJECT NUMBER 81544 SURVEYED MAY 1981