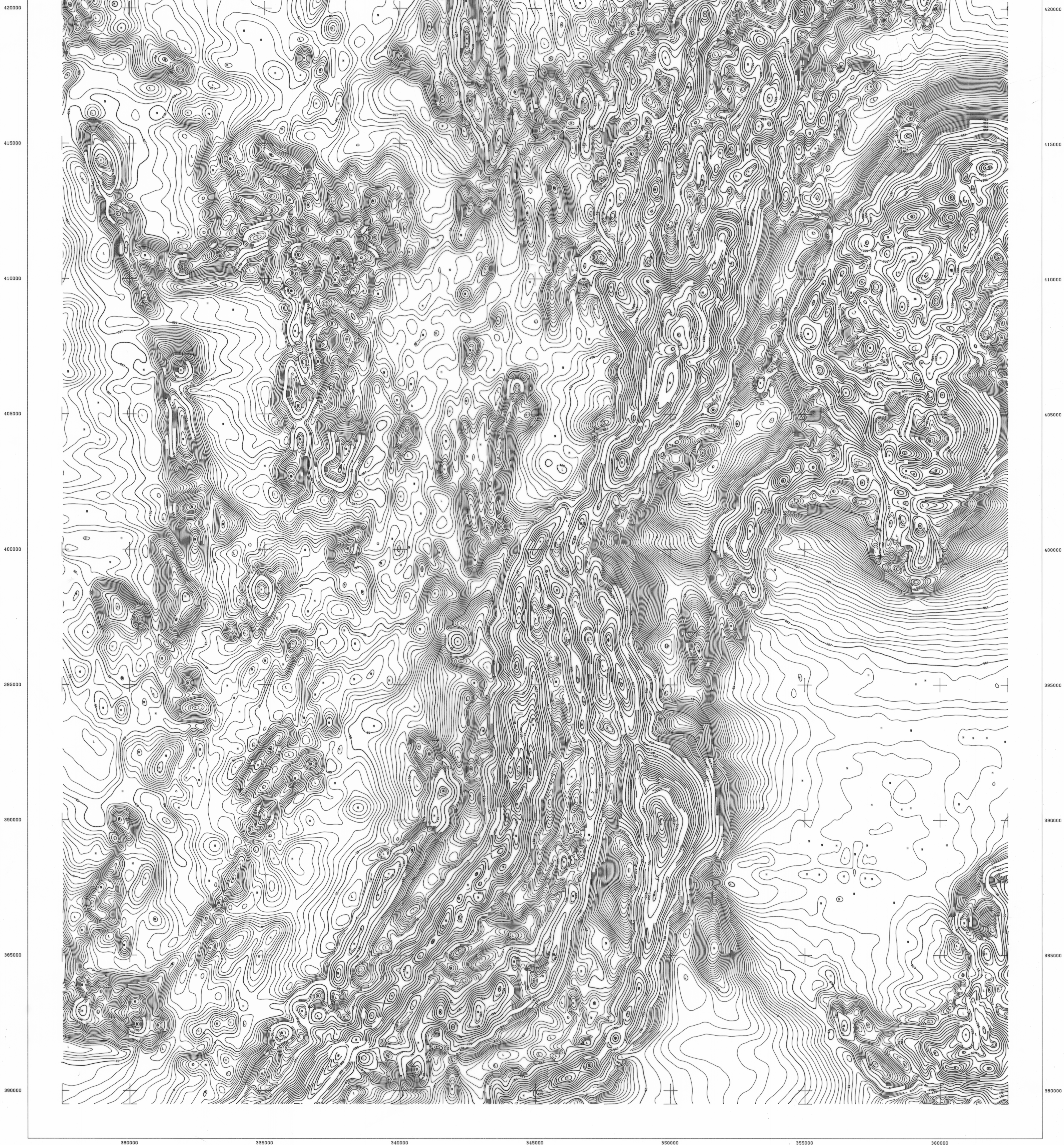


330000 335000 340000 345000 350000 355000 360000



Airborne Geophysical Survey and Compilation by

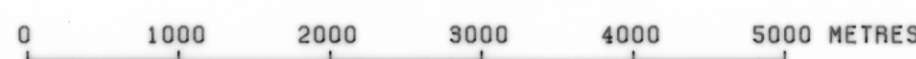
GEOEX
PTY LTD

for

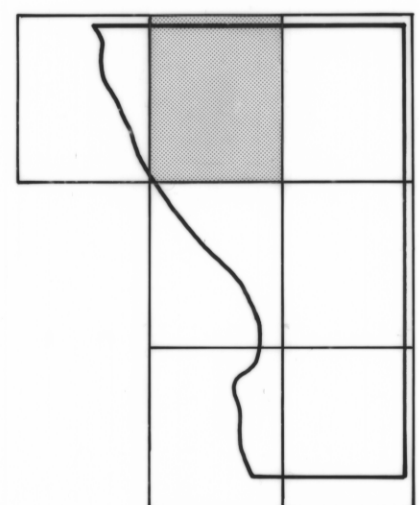
DEPARTMENT OF MINES TASMANIA
WEST COAST AREA TASMANIA

CONTOURS OF RESIDUAL TOTAL MAGNETIC INTENSITY

SCALE 1:50000



SURVEY LOCATION



SHEET INDEX

The data presented is the residual magnetic intensity, after subtracting the International Geomagnetic Reference Field from the observed Total Magnetic Intensity. The data was corrected for diurnal drift using a base station monitor at QUEENSTOWN Airfield. Latitude 42,077 S Longitude 145,328 E Altitude 258 Metres The sensor height was 3 metres. The adopted value for this location was 62094 nT Final detailed levelling of the data was performed using tie-line crossover analysis. A sample 3 point filter was applied to the data, which was then gridded and contoured using a 125m by 125m mesh cell.

EQUIPMENT SPECIFICATIONS
Cessna 441SP Aircraft
SONTEK LOGSI SYSTEM
0.1 nT MAGNETOMETER
24 Line Nal (11) DETECTOR
RING RING RADAR ALTIMETER
16mm Ground Tracking Camera
Industry Standard 9 track
32 nT/m Magnetic Tape
8 Channel Analogue Recorder
3 Channel Analogue Recorder
for Magnetometer

The nominal flight line separation was 500 metres, and the nominal tie-line bearing was 0 degrees. The observed mean sample interval in the flight direction was 0 metres, achieved with a nominal aircraft speed of 100 knots, and a reading interval of 0.8 seconds. The mean sensor height was 135 metres, using a towed bird configuration. The magnetometer accuracy is 1.0 nT, and the resolution 0.1 nT.

SURVEY BOUNDARY

CONTOUR INTERVAL 5 nTesi

PROJECT NUMBER 81544 SURVEYED MAY 1981