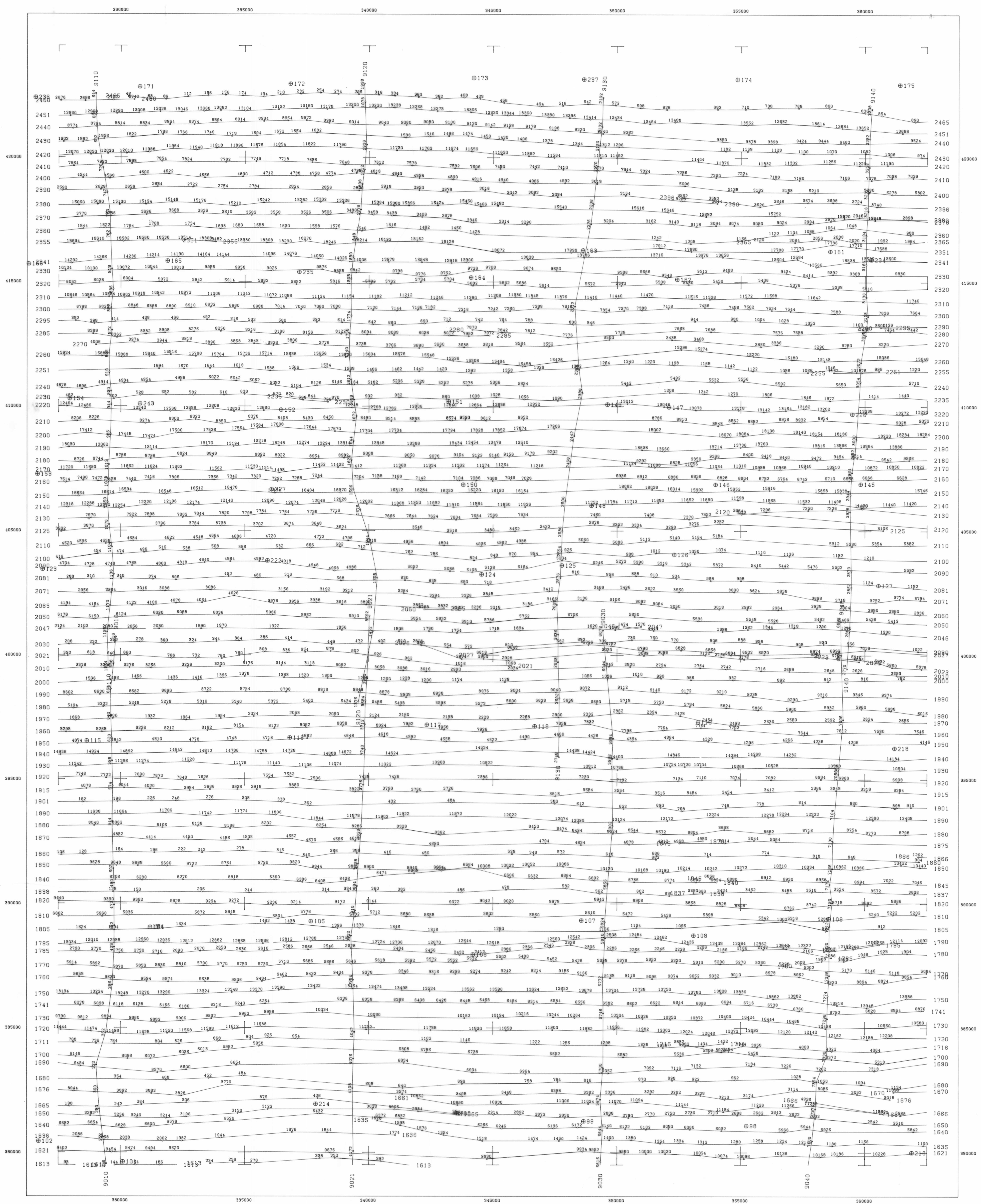


OVERSIZE
VERTICAL PLAN
No. 2



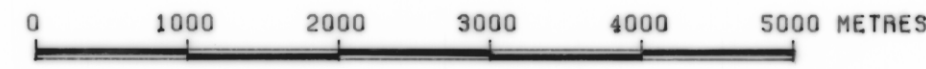
Airborne Geophysical Survey and Compilation by GEOEX PTY LTD

for

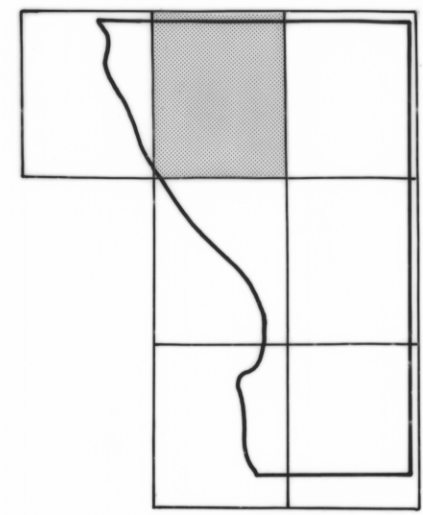
DEPARTMENT OF MINES TASMANIA
WEST COAST AREA TASMANIA

FLIGHT PATH PLOT

SCALE 1:50000



SURVEY LOCATION



SHEET INDEX

Navigation control was by reference to photostations and/or photo strips. Flight path analysis was achieved by identification of 16mm ground tracking photographs on the navigation control. The ground tracking camera was operated at a rate of one camera frame for two data samples, such that successive camera frames overlap. An attempt was made to recover fiducials at intervals of 1.0 kilometre, and only recovered fiducials are shown on the map. During processing the photostation was controlled using the Australian Metric Grid control points.

REGISTRATION POINT IDENTIFIED ON PHOTOSTATION
+ 5000 metre AUSTRALIAN METRIC GRID

PROJECT NUMBER B1544 SURVEYED MAY 1981