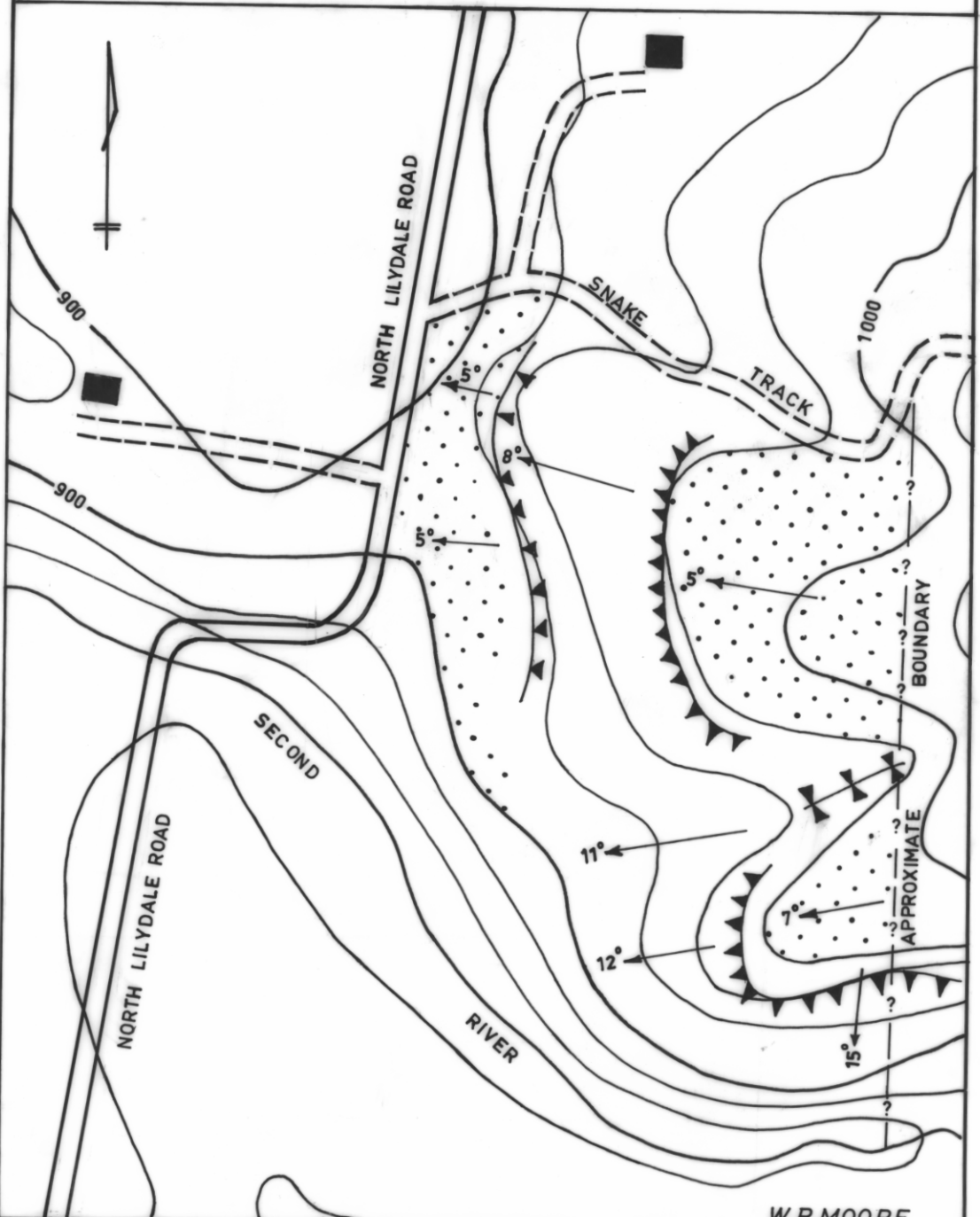


4920

773

5 cm

SLOPE STABILITY P.C.HINDS NORTH LILYDALE



W.R. MOORE

CONTOUR INTERVAL 25FT.

-  **Building Recommended**
-  **Slope Angle and Direction**
-  **Break in Slope, Downslope Side Indicated**
-  **Break in Slope, Upslope Side Indicated**
-  **Gully**

0 50 100 200 Yds

0 100 200 Metres