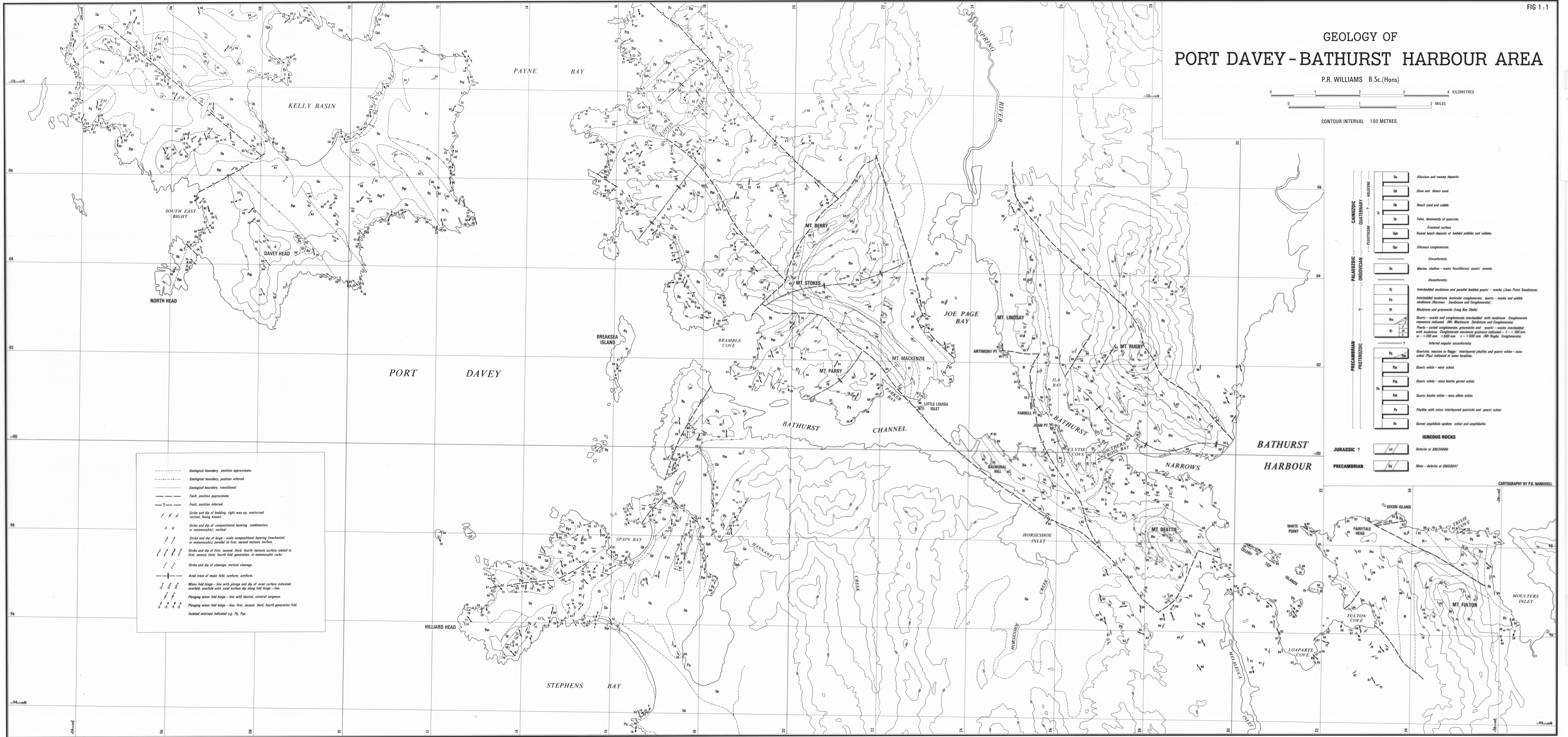


# GEOLOGY OF PORT DAVEY - BATHURST HARBOUR AREA

P.R. WILLIAMS B.Sc.(Hons)



CONTOUR INTERVAL 100 METRES.



- Geological boundary, position approximate.
- - - Geological boundary, position inferred.
- - - Geological boundary, transitional.
- Fault, position approximate.
- Fault, position inferred.
- Strike and dip of bedding, right way up, overturned, vertical, being known.
- Strike and dip of compositional layering (sedimentary or metamorphic), vertical.
- Strike and dip of large-scale compositional layering (mechanical or metamorphic) parallel to first, second tectonic surface.
- Strike and dip of first, second, third, fourth tectonic surface related to first, second, third, fourth fold generation in metamorphic rocks.
- Strike and dip of cleavage, vertical cleavage.
- Axial trace of major fold, synform, antiform.
- Minor fold hinge - line with plunge and dip of axial surface indicated, overfold, overfold with axial surface dip along fold hinge - line.
- Plunging minor fold hinge - line with dextral, sinistral vergence.
- Plunging minor fold hinge - line, first, second, third, fourth generation fold.
- Isolated outcrop indicated e.g. Pt, Pq.

CENOZOIC	Qa	Alluvium and swamp deposits.
	Qd	Dune and blow sand.
	Qc	Beach sand and cobble.
QUATERNARY	Qs	Talus, dominantly of quartzite.
	Qe	Erosional surface.
	Qp	Raised beach deposits of bedded pebbles and cobbles.
PLEISTOCENE	Qp	Siliceous conglomerate.
	Qp	Unconformity.
	Qp	Marine, shallow-water fossiliferous quartz arenite.
PALAEOZOIC	Pa	Unconformity.
	P1	Interbedded mudstone and parallel bedded quartz - wacke (Lower Point Sandstone).
	P2	Interbedded mudstone, lenticular conglomerate, quartz - wacke and pebbly sandstone (Marrows Sandstone and Conglomerate).
PROTEROZOIC	P3	Mudstone and greywacke (Long Bay Shale).
	P4	Quartz - wacke and conglomerate interbedded with mudstone. Conglomerate sequences indicated: (1) Middlestone Sandstone and Conglomerate; (2) Point - sand conglomerate, greywacke and quartz - wacke interbedded with mudstone. Conglomerate maximum grain size indicated: 1 - < 100mm, 2 - > 100mm - < 500mm, 3 - > 500mm (Mt Ruby Conglomerate).
	P5	Inferred angular unconformity.
PRECAMBRIAN	P6	Quartzite, massive to flaggy, interlayered phyllite and quartz white - mica schist (Pq) indicated at some localities.
	P7	Quartz white - mica schist.
	P8	Quartz white - mica biotite garnet schist.
IGNEOUS ROCKS	P9	Quartz biotite white - mica white schist.
	P10	Phyllite with minor interlayered quartzite and quartz schist.
	P11	Coronet amphibole epidote schist and amphibolite.
JURASSIC ?	J1	Dolomite at DMS24066.
	J2	Mica - dolomite at DMS5047.
PRECAMBRIAN	P12	Mica - dolomite at DMS5047.