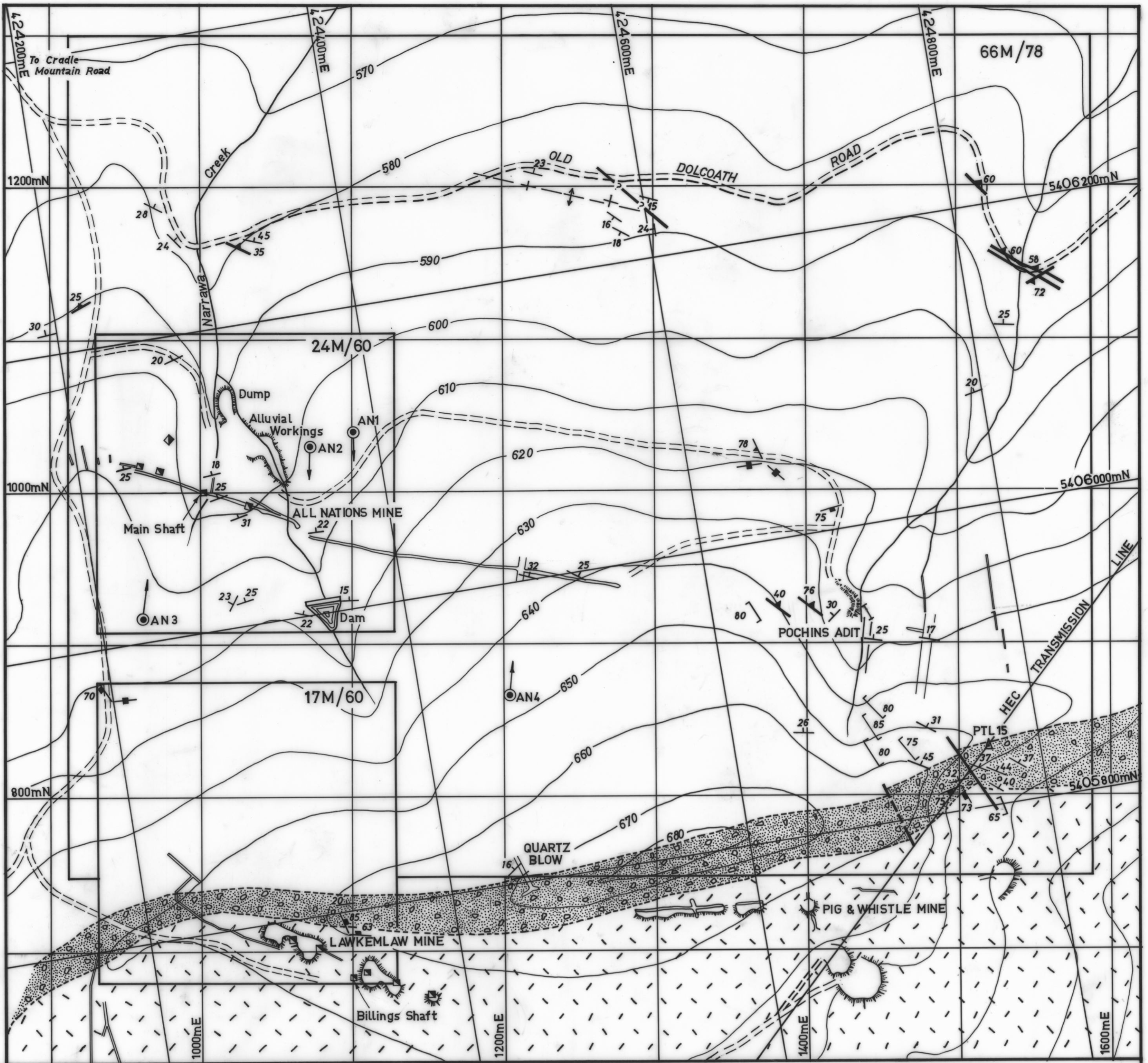
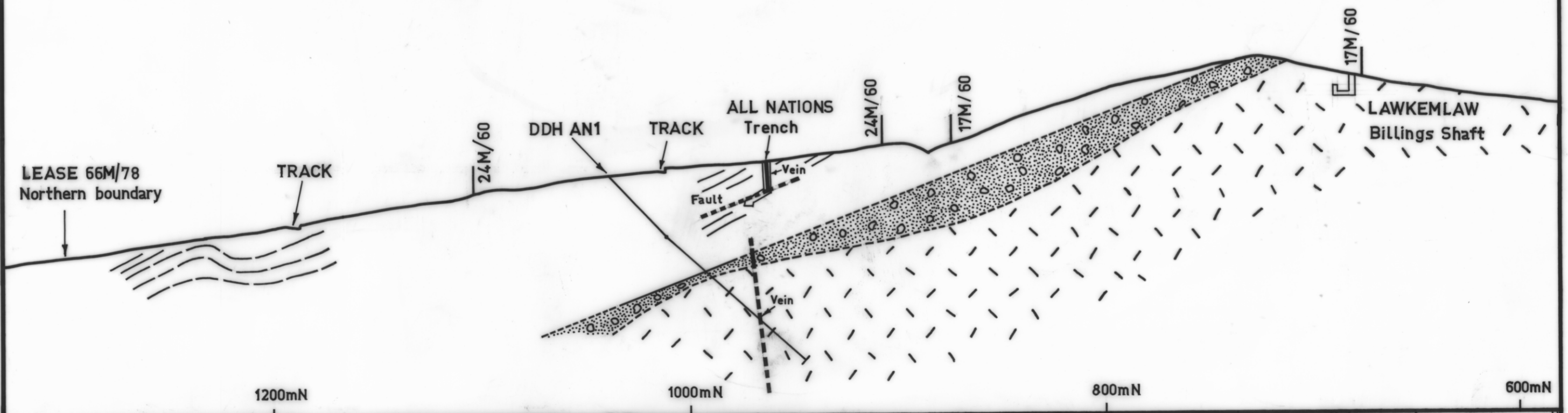


4956 B

838



GEOLOGICAL SECTION ON MINE GRID 1100mE
V/H=1

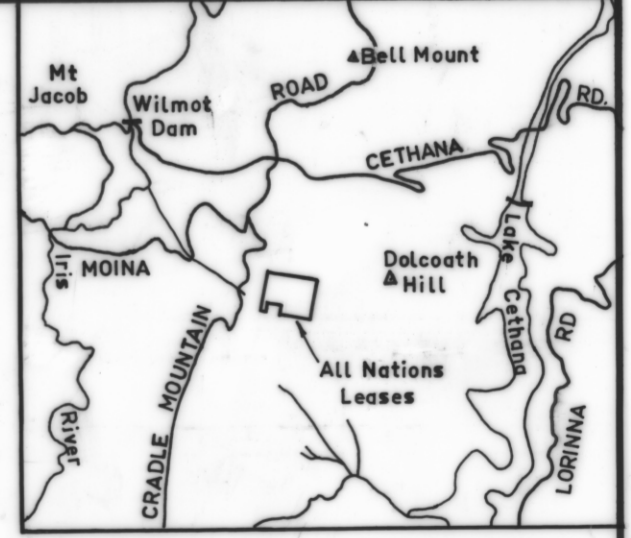


GEOLOGY OF THE ALL NATIONS AREA, MOINA

0 100 200metres

GEOLOGIST P.L.F. COLLINS OCTOBER 1982

- | | | |
|-------------------|---|----------------------------|
| ORDOVICIAN | MOINA SANDSTONE - Quartz sandstone, siltstone, shale and grit/fine conglomerate | AN 3 Diamond drill hole |
| | ROLAND CONGLOMERATE - Conglomerate, quartz sandstone | 600 Contour (interval 10m) |
| CAMBRIAN | BULL CREEK FM - Quartz feldspar and quartz porphyry | Trench |
| | Geological boundary | Adit |
| | Fault | Shaft |
| | Fault inferred | 16 Bedding |
| | Mineral Lease boundary (approximate) | Bedding, horizontal |
| | | 75 Joint |
| | | 65 Cleavage |



LOCALITY MAP

GEOLOGY AND MINE WORKINGS BASED ON NIXON (1954)
WITH ADDITIONAL MAPPING BY P.L.F. COLLINS (1980-1982)