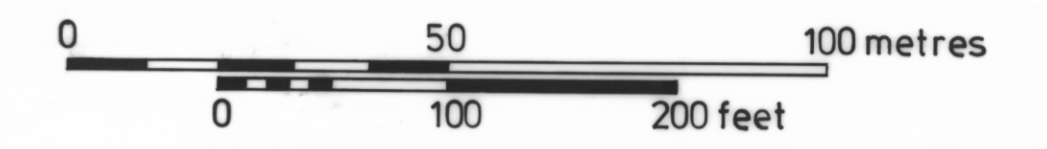
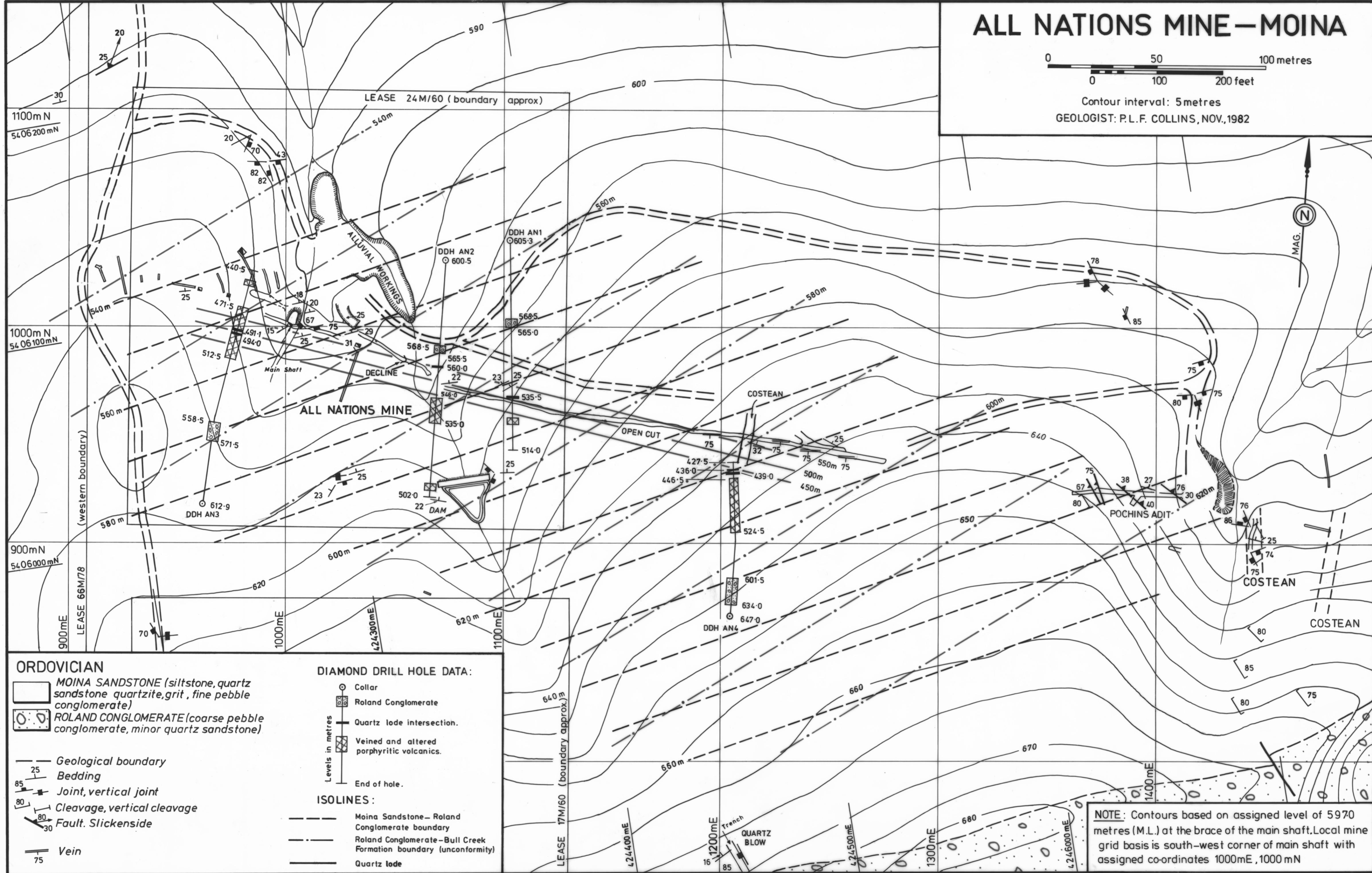


5 cm

# ALL NATIONS MINE - MOINA



Contour interval: 5 metres  
GEOLOGIST: P.L.F. COLLINS, NOV, 1982



**ORDOVICIAN**  
 MOINA SANDSTONE (siltstone, quartz sandstone, quartzite, grit, fine pebble conglomerate)  
 ROLAND CONGLOMERATE (coarse pebble conglomerate, minor quartz sandstone)

Geological boundary  
 Bedding  
 Joint, vertical joint  
 Cleavage, vertical cleavage  
 Fault, Slickenside  
 Vein

**DIAMOND DRILL HOLE DATA:**

- Collar
- Roland Conglomerate
- Quartz lode intersection.
- Veined and altered porphyritic volcanics.
- End of hole.

**ISOLINES:**

- Moina Sandstone - Roland Conglomerate boundary
- Roland Conglomerate - Bull Creek Formation boundary (unconformity)
- Quartz lode

NOTE: Contours based on assigned level of 5970 metres (M.L.) at the base of the main shaft. Local mine grid basis is south-west corner of main shaft with assigned co-ordinates 1000mE, 1000mN

FIG. 4

REDUCE TO 380 mm.