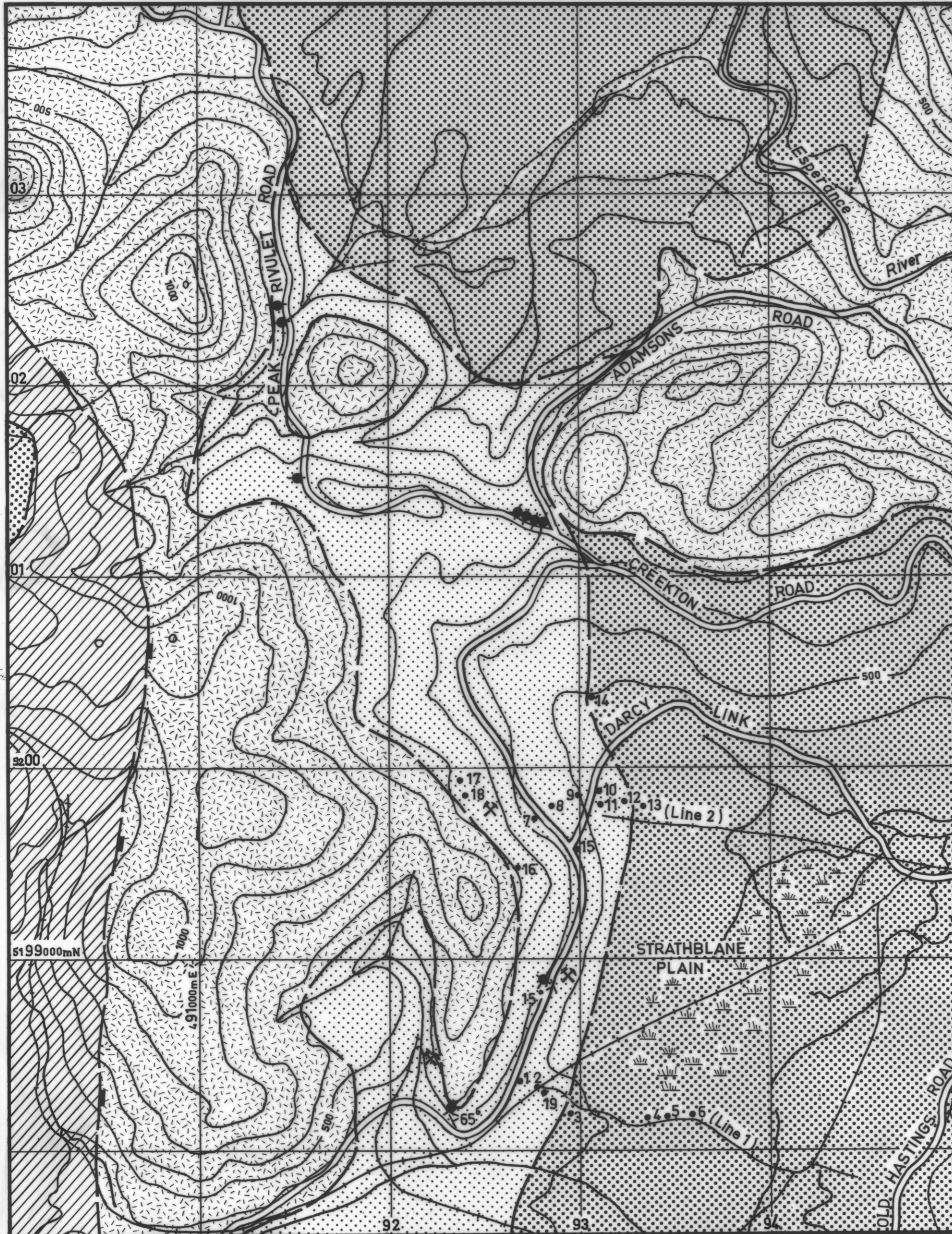


5 cm



GEOLOGICAL SKETCH MAP
STRATHBLANE COALFIELD

0 1 2km

Geologist : C.A. BACON
 CONTOUR INTERVAL - 100 FEET

JURASSIC

Dolerite

TRIASSIC

Lithic sandstone, mudstone, coal

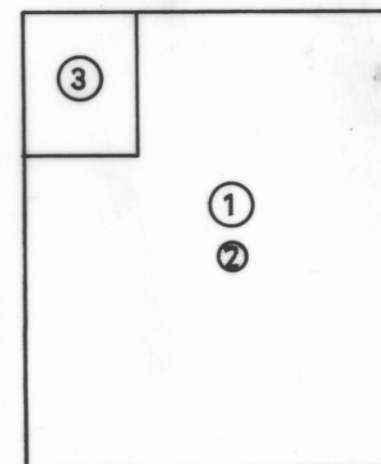
Quartzose sandstone

PERMIAN

Pebbly and fossiliferous mudstone, siltstone

UPPER
 PARMEENER
 SUPER-GROUP
 LOWER

- Coal outcrop
- Mine workings: shafts, adits, pits, trenches
- Dip and strike of bedding
- Borehole
- Geological boundary (approximate)
- Fault (position approximate relative downthrown side indicated)
- Tramline



1 BACON, C.A., 1982. Reconnaissance mapping
 2 HALE, G.E.A., 1953. *Pap. Proc. R. Soc. Tasm.* 87: 97-135
 3 KNIGHTS, C.J. 1976. *Unpubl. Rep. Dep. Mines Tasm.* 1976/43

- Major source
- Minor source