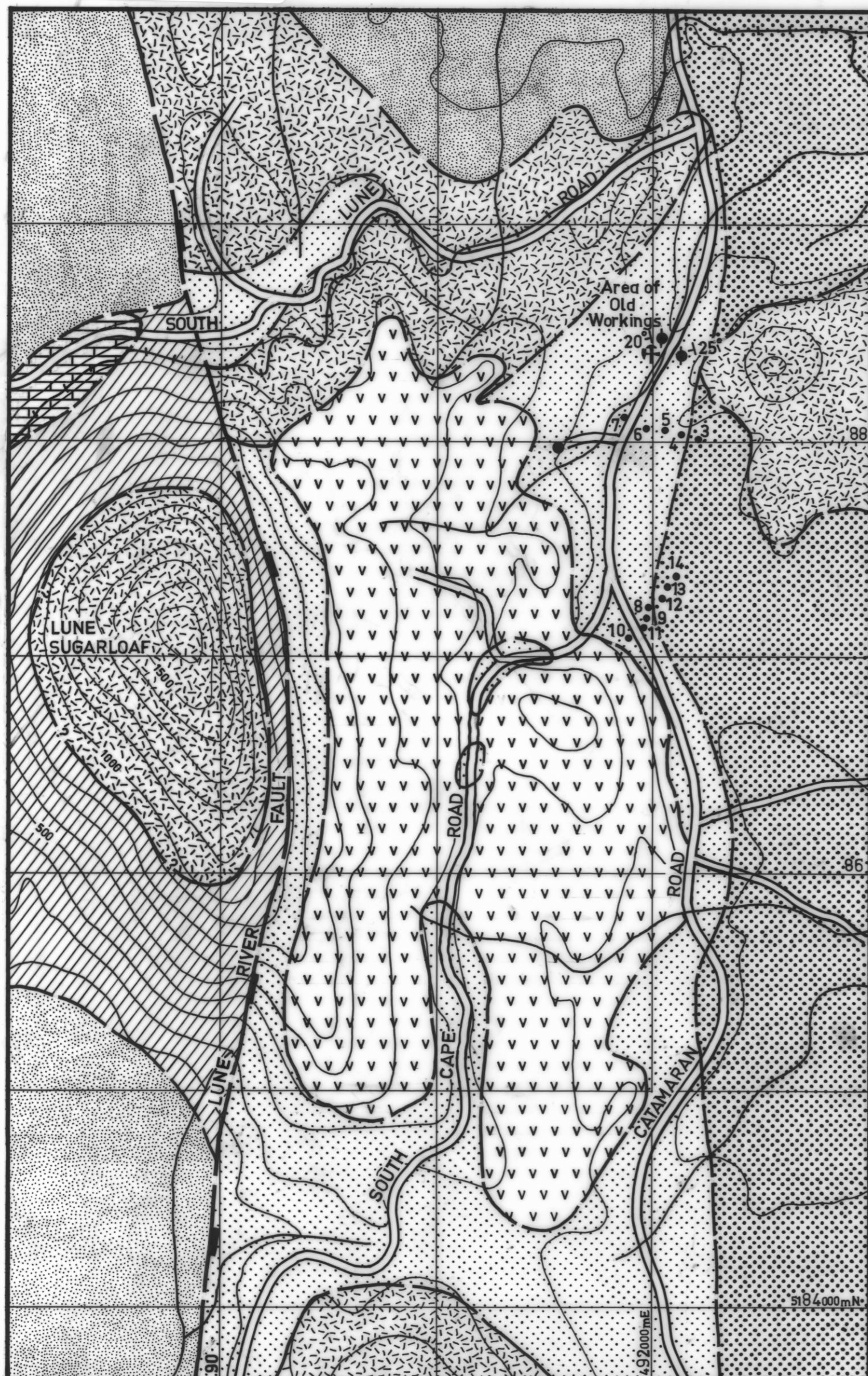


5 cm



GEOLOGICAL SKETCH MAP
IDA BAY COALFIELD

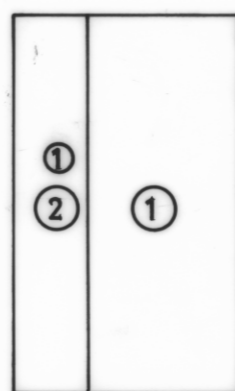
0 1 2km

CONTOUR INTERVAL—100 FEET

Geologist : C.A. BACON

- QUATERNARY**
 - Alluvium
- TERTIARY**
 - Basalt
- JURASSIC**
 - Dolerite
- PERMO-TRIASSIC**
 - Lithic sandstone mudstone coal
 - Quartzose sandstone
 - Pebbly and fossiliferous mudstone, siltstone
- ORDOVICIAN**
 - Limestone
- Coal mine workings
- Coal outcrop
- Dip and strike of bedding
- Borehole
- Geological boundary (approximate)
- Fault (position approximate relative downthrown side indicated)
- Tramline

UPPER
PARMEENER
SUPER-GROUP
LOWER



- 1 BACON.C.A. 1982 Reconnaissance Mapping
- 2 SHARPLES.C.E. 1979 Honours Thesis University of Tasmania
- Major source
- Minor source