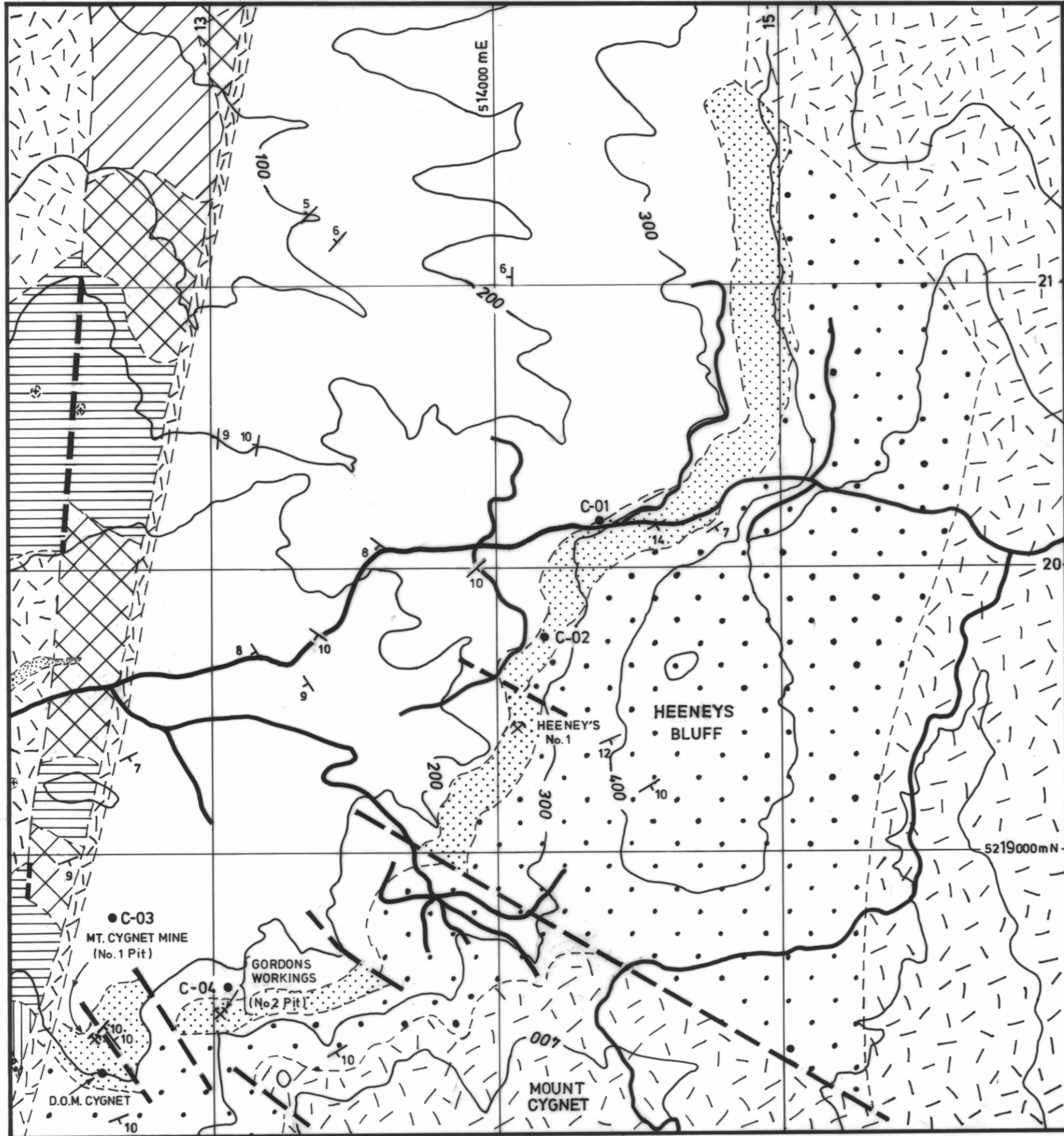


4970

868

5 cm



GEOLOGICAL SKETCH MAP
CYGNET COALFIELD



Geologist: C.A. BACON
 Geology by N. Farmer
 CONTOUR INTERVAL - 100 feet

- QUATERNARY**
- Alluvium
- CRETACEOUS**
- Syenite
- JURASSIC**
- Dolerite
- TRIASSIC-PERMIAN**
- Quartzose sandstone
- Lithic sandstone, mudstone, coal (Cygnet Coal Measures)
- Abels Bay Formation
- Risdon Sandstone
- Minnie Point Formation
- Deep Bay Formation
- Bundella Mudstone
- Woody Island Siltstone
- Mine workings: adits, shafts, pits, trenches
- Dip and strike of bedding
- D.O.M. Department of Mines 1979 drilling
- C-01 Capricorn Mining 1981 drilling
- Geological boundary, Fault

UPPER
 PARMEENER SUPER-GROUP
 LOWER