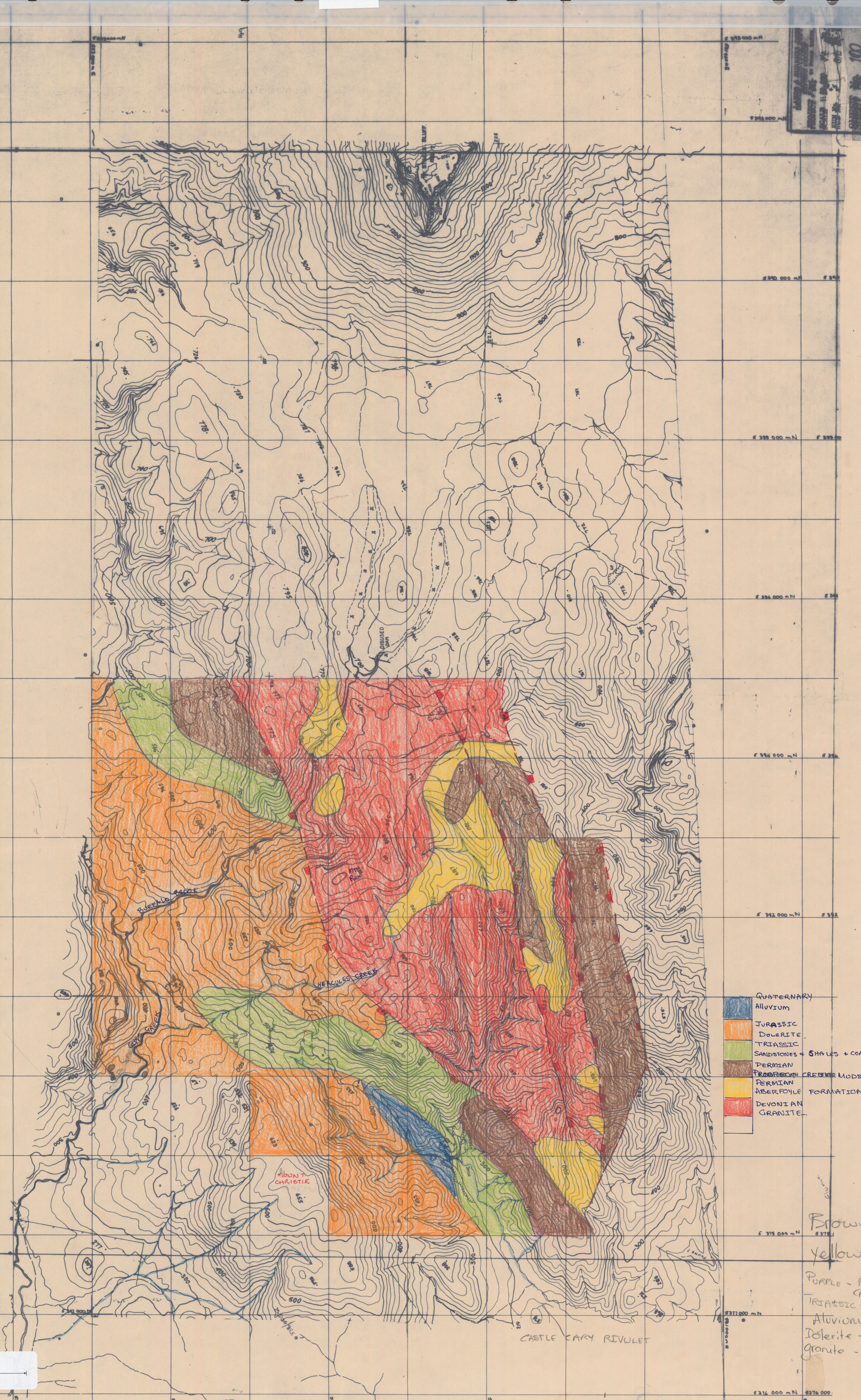


4971E

MT. CHRISTIE  
&  
MT. REX  
20000  
STANHOPE  
&  
MT. CHRISTIE

PROJECT No. 100  
SHEET No. 100



- QUATERNARY Alluvium
- JURASSIC DOLERITE
- TRIASSIC SANDSTONES + SHALES + COAL
- PERMIAN ABERFOYLE FORMATION
- PERMIAN CREEPER MUDSTONE
- DEVONIAN GRANITE

Time Dinner  
2 Oct

Brown  
yellow  
Purple - Prospect  
Creek Mt.  
Triassic - Green  
Alluvium - blue  
Dolerite - orange  
granite - pink

5 cm