

5012C

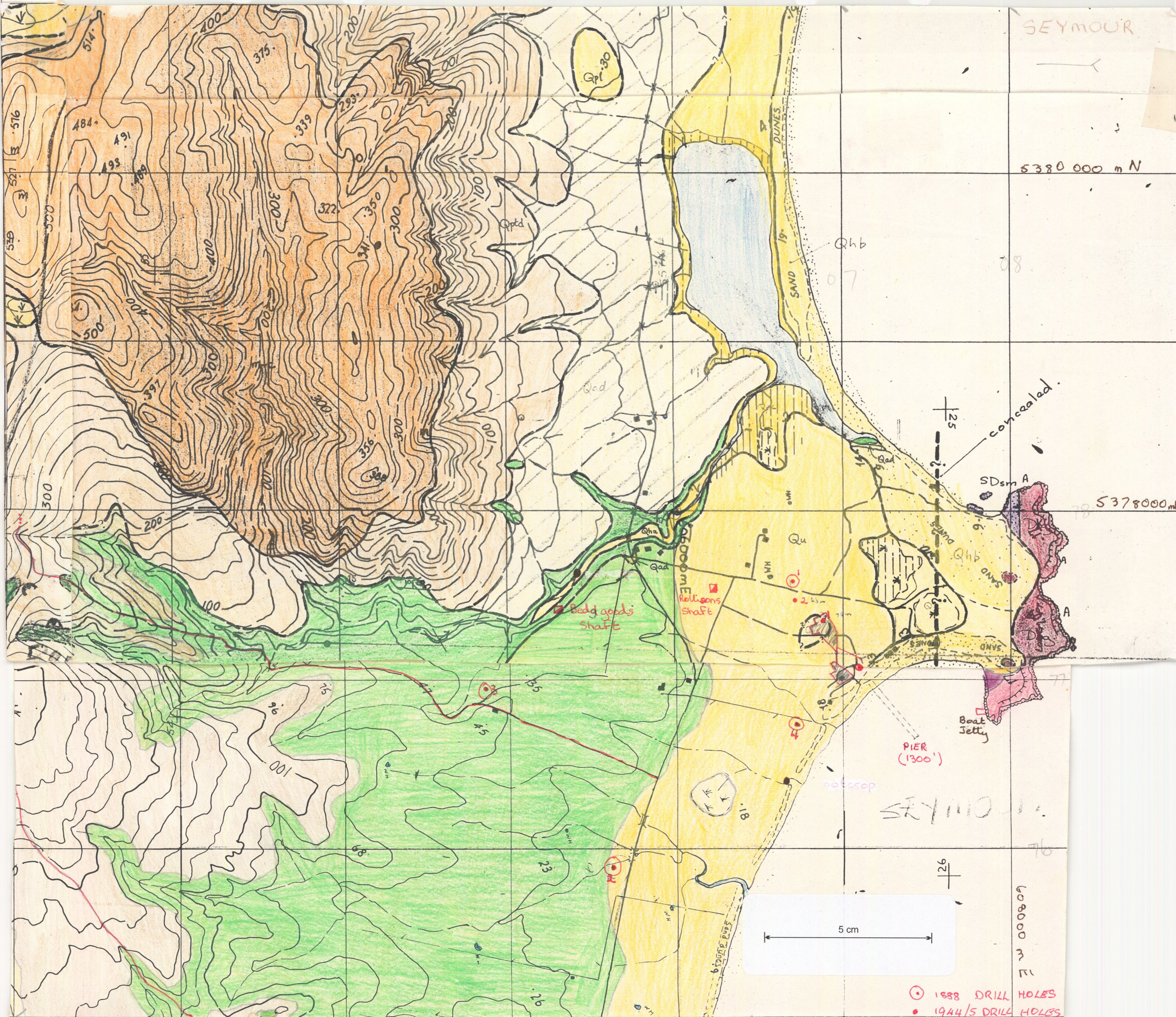
Seymour coalfield

1:20 000

SEYMOUR

5380 000 m N

5378000 m N



PIER (1300')

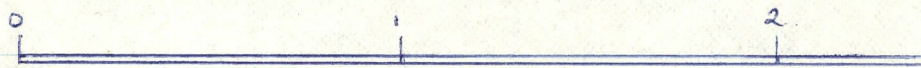
5 cm

1888 DRILL HOLES
1944/5 DRILL HOLES

600000 m E

GEOLOGICAL SKETCH MAP.

SEYMOUR COALFIELD.



C.A. BACON and C.R. CALVER

Geology by ~~N.J. TURNER~~ and ~~C.R. CALVER~~

CONTOUR INTERVAL $\frac{20m}{100}$

LEGEND.

QUATERNARY \rightarrow ~~Q~~ ^Q ~~brackish and sandy~~ sands

- Aeolian sand, marine sand and gravel
- Alluvial sand + gravel, swamp deposits.
- ^{qt} ~~Fales~~ Dolomite boulder talus

JURASSIC

- Dolerite

TRIASSIC

- ^{arenite} ~~undifferentiated~~ ^{Littie arenite} sandstones, mudstones, coal.

DEVONIAN

- Granite

SILURO-DEVONIAN.

- contact metamorphic ~~sp~~ psammite, spotted pelite and minor schist, (Mathinna Beds)

} Geological boundary.

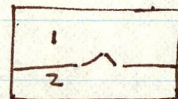
Fault - concealed; position approximate.

- Coal outcrop.
- 1888 Drilling holes
- 1944/5 Drilling holes
- ~~Main~~ shaft.
- Circular shaft

Tunnels

Underground mine workings

RESPONSIBILITY
~~RELIABILITY~~ DIAGRAM



1. N.J. Turner and C.R. Calver (In prep)
2. P. W. Sansom 1978.

N.B.

- Both are alluvial sand + gravel, swamp deposits.

$\frac{464}{3} \approx 1400 \approx 500$
m.