


# SCHEMATIC GEOLOGICAL SECTION (LOOKING WEST)

FROM B. H. P. DRILLING AND DEPT. OF MINES ST. VALENTINES 1:50 000 SHEET

HORIZONTAL SCALE 1:50 000  
VERTICAL SCALE 1:10 000

 The main horizon with inter-basalt sediments present in all holes and contains a microflora which indicates an early Oligocene Age ( $\approx 35-38$  Ma)

SOUTH

NORTH

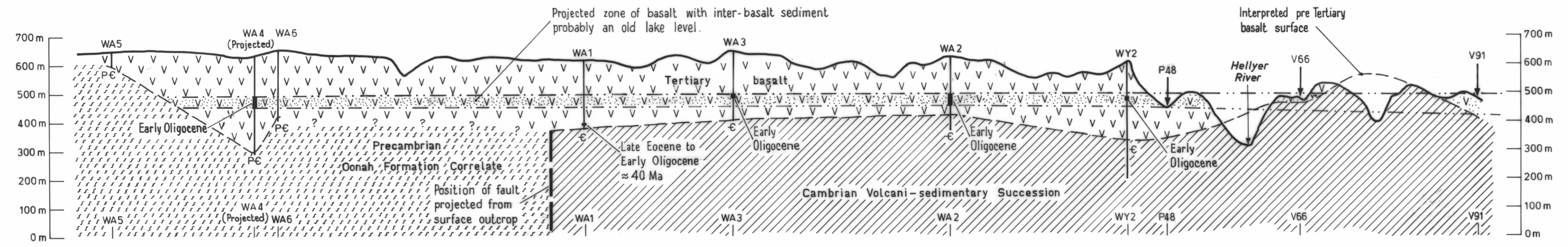


FIG. 2