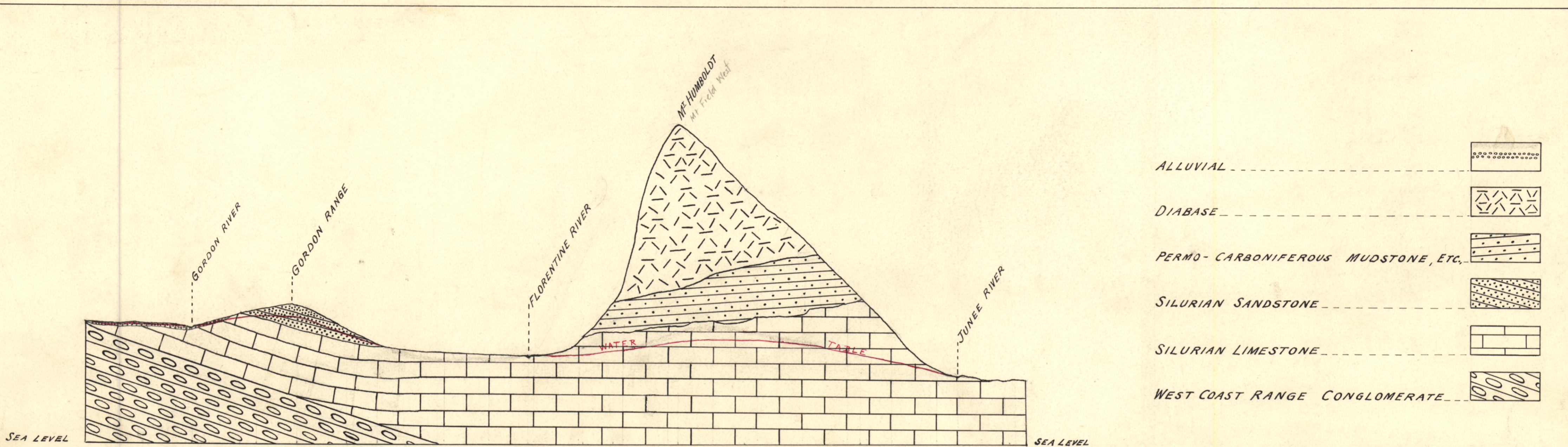


505

109

5 cm



- ALLUVIAL
- DIABASE
- PERMO-CARBONIFEROUS MUDSTONE, ETC.
- SILURIAN SANDSTONE
- SILURIAN LIMESTONE
- WEST COAST RANGE CONGLOMERATE

SCALES

HORIZONTAL : 1 INCH = 2 MILES

VERTICAL : 1 INCH = 1000 FEET

VERTICAL SECTION ALONG LINE A-B
 FLORENTINE & GORDON VALLEY

505 / 73.74

10-505