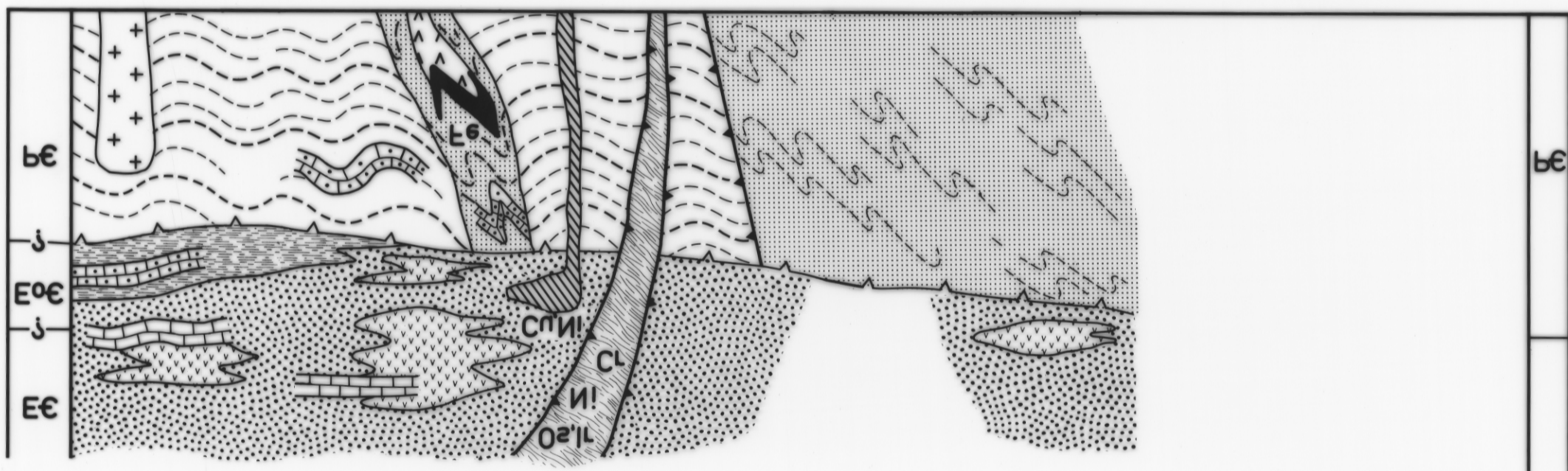


- Quaternary, mudstone (Maitimna Beds)
- EARLY DEVONIAN / ORDOVICIAN (E.Tas)**
- Spherozoic deposits
- MIDDLE DEVONIAN**
- Porphyrite (St Marys Porphyrite)
- Gneiss / Amphibolite
- Altered granite
- MIDDLE - LATE DEVONIAN**
- Coal measures / Formosa Super-Group
- Glacial marine, freshwater sequences (Lake Leopold)
- TRIASSIC - LATE CARBONIFEROUS**
- Granite
- JURASSIC**
- Granite / Amphibolite
- Conglomerate, sandstone
- CRETACEOUS**
- Basalt
- Glacial and fluvial deposits, minor limestone
- QUATERNARY-TERTIARY**

- Granite / Amphibolite
- (Lyellian region)
- Gneiss / schist - metamorphosed Precambrian
- (Rocky Cape region)
- Sandstone, mudstone with basalt and dolomite/magnesian
- PROTEROZOIC**
- Dolomite - gabbro
- Serpentinized ultramafic complex
- Sandstone, mudstone, dolomite (Success Creek Group)
- and minor limestone (Crimson Creek Formation)
- Mudstone, greywacke with tholeiitic basalt (Dundas Group)
- Mudstone, greywacke, turbiditic conglomerate (Mt Read Volcanics)
- Mainly felsic volcanics with associated gneissoids
- Volcanic-volcaniclastic sequences (Tyndal Group)
- Conglomerate, sandstone
- CAMBRIAN - EOCAMBRIAN**
- Siliciclastic conglomerate, sandstone (Owen Conglomerate)
- Gneiss sandstone
- Limestone, mudstone (Carbon Limestone)
- ORDOVICIAN (- LATE CAMBRIAN) (W.Tas)**
- Gneiss sandstone, mudstone, minor limestone (Eldon Group)
- EARLY DEVONIAN - SILURIAN (W.Tas)**

- and volcanogenic
- Disseminated (graben)
- Massive sulphide/oxide
- Skarn, replacement
- Vein
- Alluvial, lacustrine
- MINERAL DEPOSITS**
- Fault
- Erosional surface
- Unconformity
- Roundly, irregular

5 cm



209

5079 J