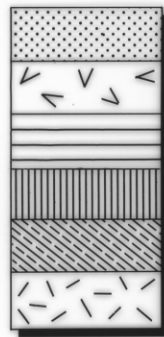
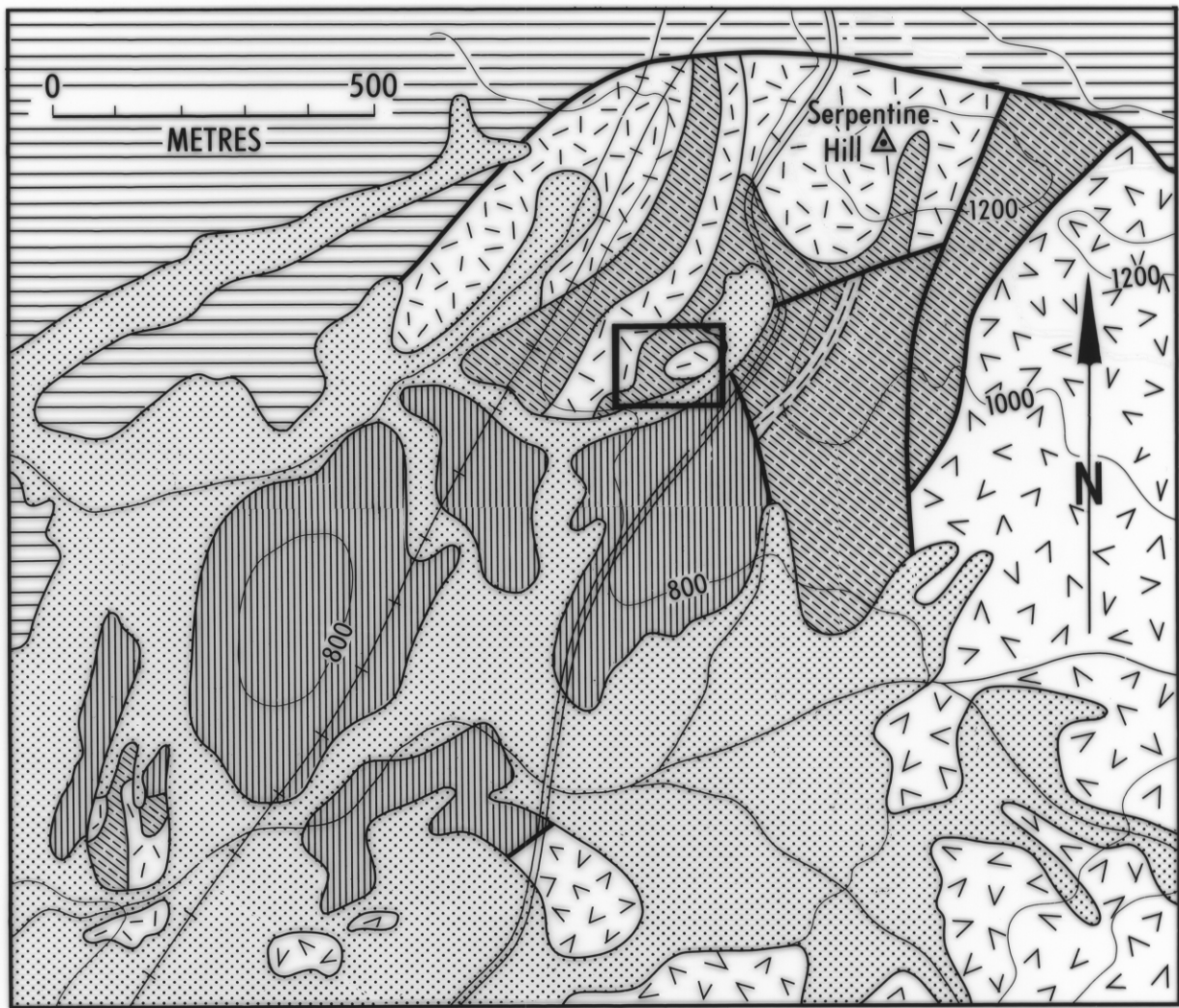


5108 BA

fig 44

256

5 cm



Recent alluvium
 Middle Cambrian low-titanium tholeiite
 Eocambrian volcanoclastic lithicwacke-mudstone succession
 Intrusive two-pyroxene gabbro
 Dominantly intrusive and layered olivine-rich sequence
 Dominantly layered orthopyroxene-rich sequence

— Fault
 - - - - - Approximate geological boundary

≡≡≡≡≡≡ Zone of chrome spinel concentration

□ Area covered by fig. 45