

ORIGINAL

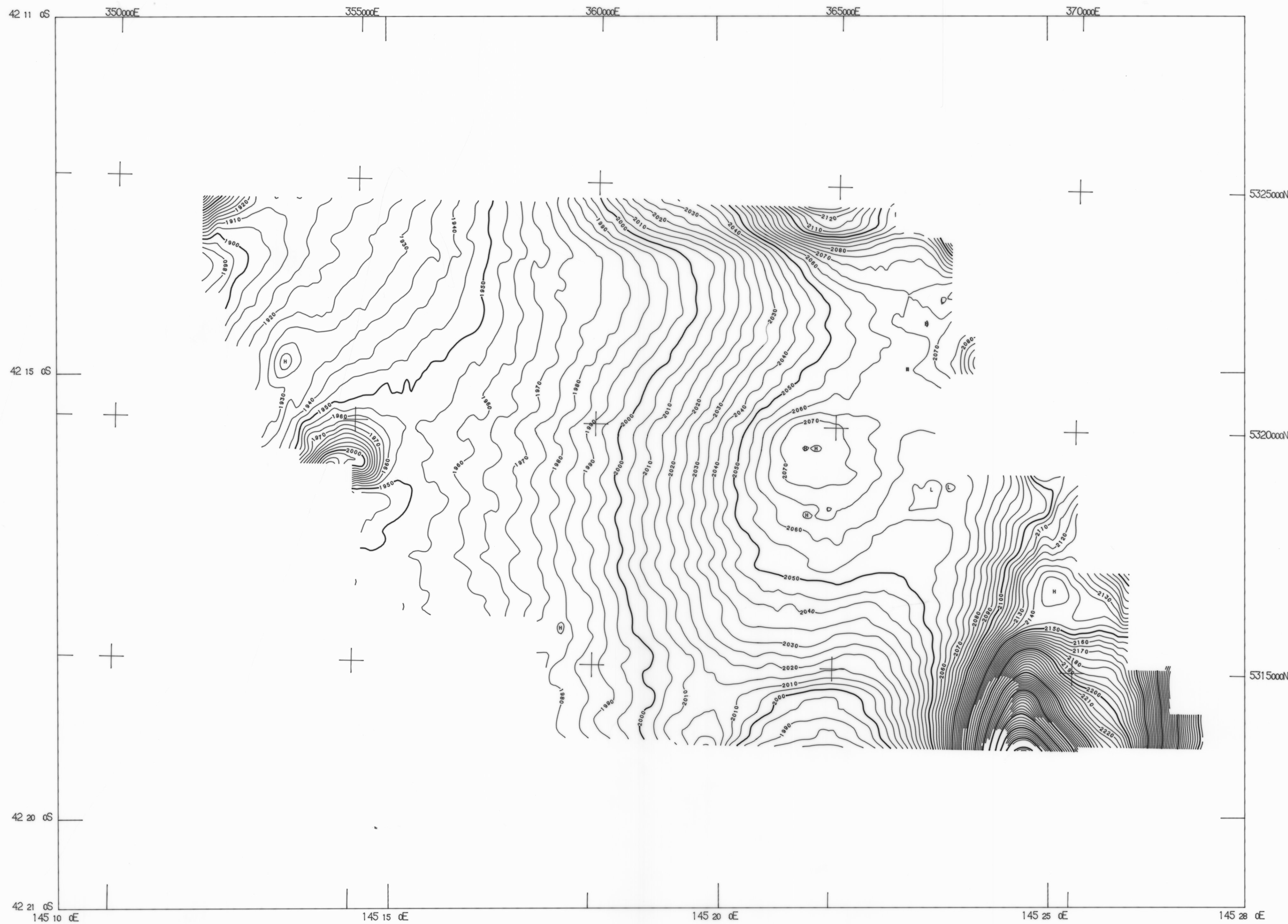
5 cm

5162 D

126

1:50,000

* OVERSIZE *
* VENTILATION *
* VENTILATION *



AIRBORNE SURVEY SPECIFICATIONS

MAGNETOMETER : 3 G-813 proton precession magnetometers
in tail stinger and wing tips.
Sensitivity : 0.2 nT

RECORDING INTERVAL : 30m sampling

SPECTROMETER : GR - 800 gamma ray spectrometer
Volume : 16.8 litres

TOTAL COUNT WINDOW : 0.8 - 3.00 MeV
POTASSIUM WINDOW : 1.36 - 1.56 MeV
URANIUM WINDOW : 1.66 - 1.86 MeV
THORIUM WINDOW : 2.42 - 2.82 MeV
RECORDING INTERVAL : 60m sampling

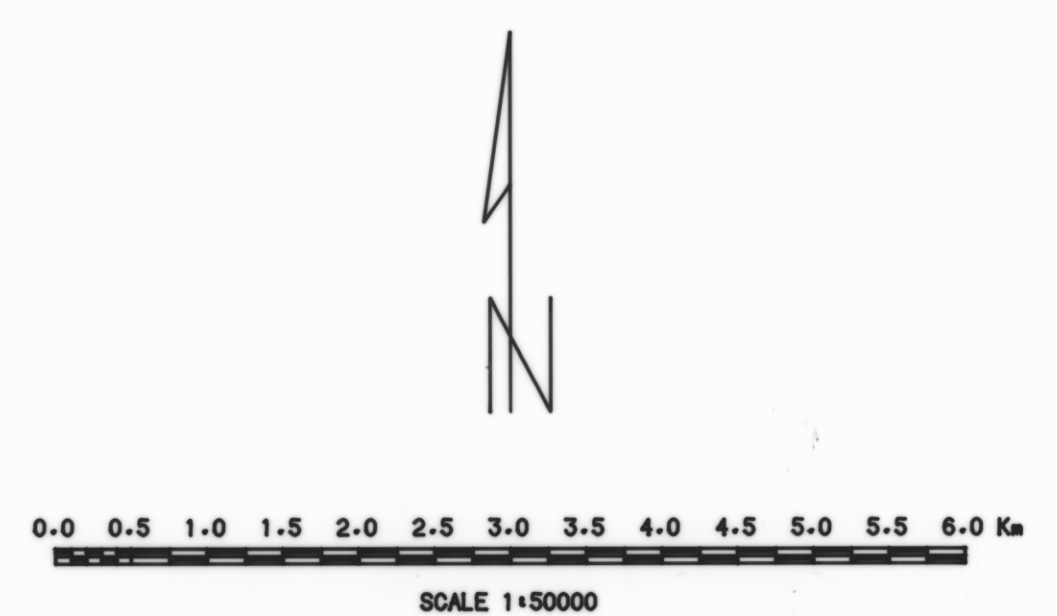
DATA RECORDING : Geometrics 714 acquisition system.
Digital to magnetic tape.

NOMINAL TERRAIN CLEARANCE : All detectors in aircraft at 150m.
NOMINAL LINE SPACING : Traverse lines 500 metres.
Tie lines 10 km.

FLIGHT PATH RECORD : continuous tracking colour video.
FLIGHT LINE RECOVERY : Visually to 1:80,000 enlarged photos
and topographic maps

RESIDUAL MAGNETIC CONTOURS

GRADIENT ENHANCED
Grid notation refers to Australian Map Grid Zone 55
Digitised from colour photos at 1:8000
Magnetics : Gradient enhanced
: From transverse gradient derived
: From 3 total field sensors
IGRF (1980) : Updated to December 1985
IGRF (1980) : Removed, Datum 2000 nT added
Grid mesh size : 100 x 100 metres
Grid filter : Polynomial, radius 150 metres
Contour Interval : 5,10,50,100 and 250 nT



JOB NO : 9312
Flown by Geometrics International Corporation
November 1985
Processed by Engineering Computer Services, Bowral

TASMANIAN MINES DEPARTMENT

MACQUARIE HARBOUR
GRADIENT ENHANCED
RESIDUAL MAGNETIC CONTOURS

DATE: 17-MAR-86