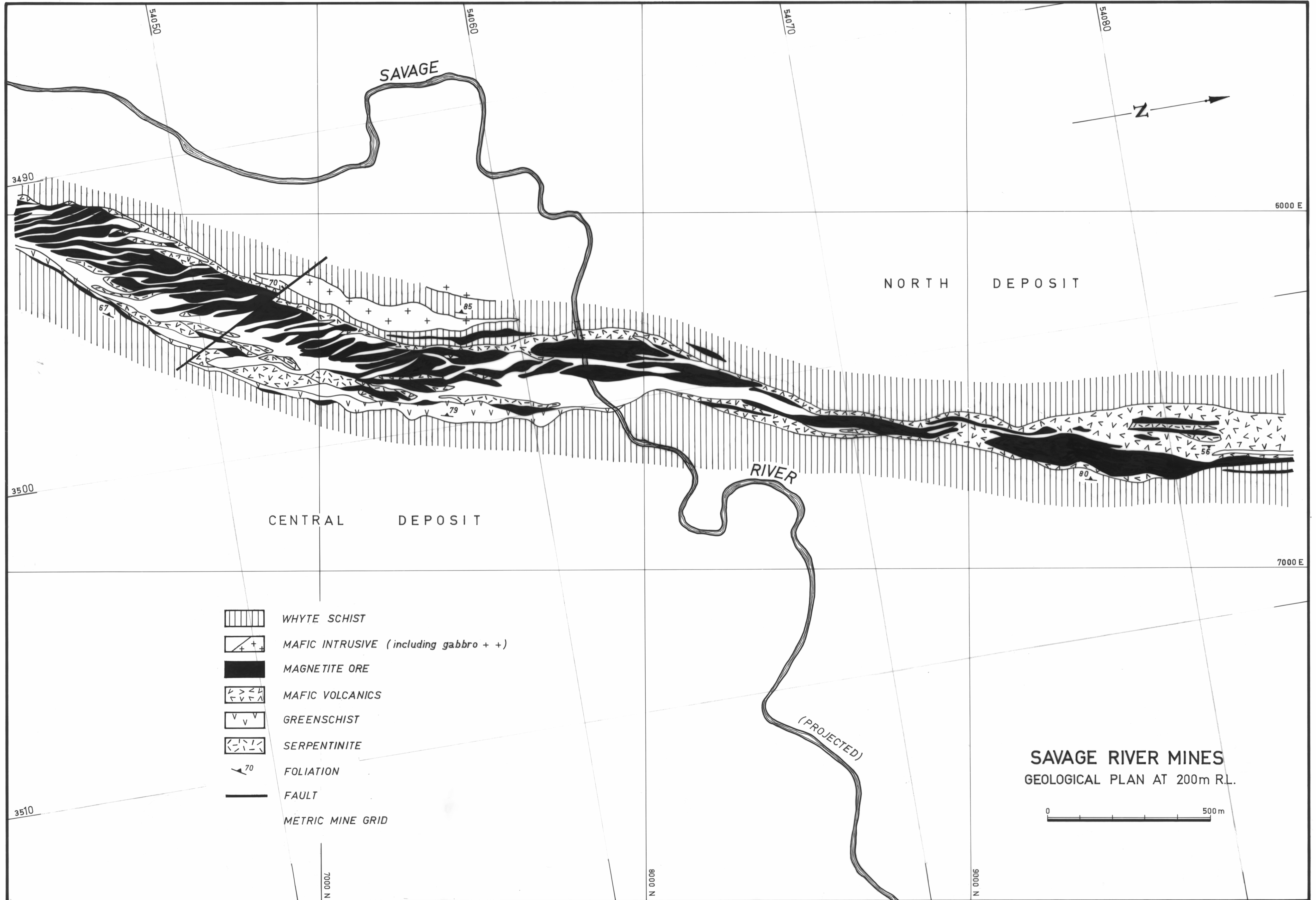

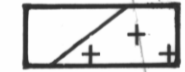

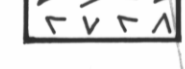
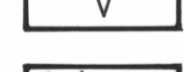
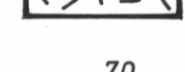





5 cm



-  WHYTE SCHIST
-  MAFIC INTRUSIVE (including gabbro + +)
-  MAGNETITE ORE
-  MAFIC VOLCANICS
-  GREENSCHIST
-  SERPENTINITE
-  FOLIATION
-  FAULT
-  METRIC MINE GRID

SAVAGE RIVER MINES
GEOLOGICAL PLAN AT 200m R.L.

0 500m