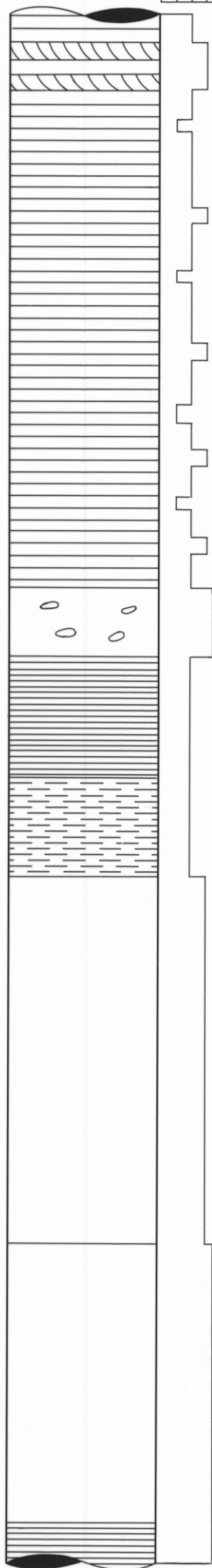


5 cm

SECTION 1

VERY FINE
FINE
MEDIUM
COARSE

Pale red



Similar beds,
~48m thick,
with very minor
crossbeds
underlie this
Section.

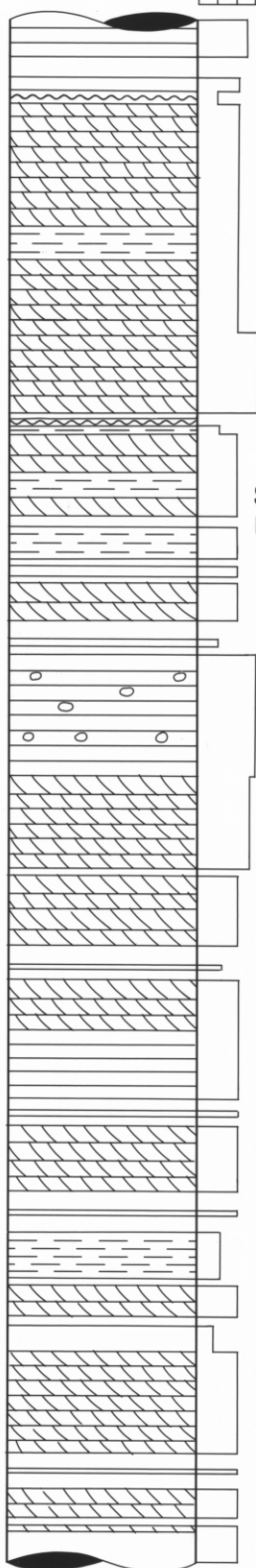
SECTION 2

VERY FINE
FINE
MEDIUM

Grey
Pale red
Grey
Pale red

Some 20mm
long pebbles.

Some 30-40mm
long pebbles



5m

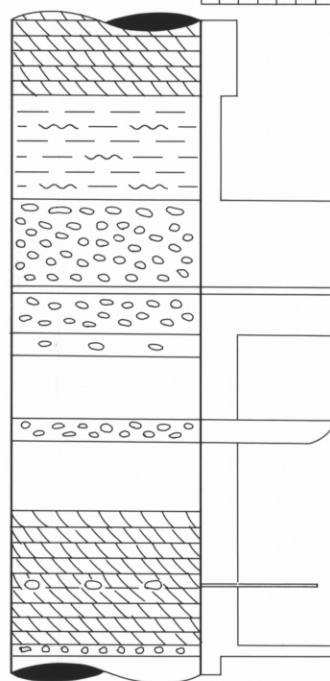
SECTION 3

VERY FINE
FINE
MEDIUM
COARSE
VERY COARSE
GRANULE
COBBLE

Pale red

Clasts of
Wonaminta phyllite
matrix-supported

Max clasts
are 20mm



LEGEND








-  Thin bedded
-  Laminated
-  Planar cross-bedding
-  Trough cross-bedding
-  Ripple marks
-  Soft-sediment-deformed
-  Conglomerate

FIG. 3