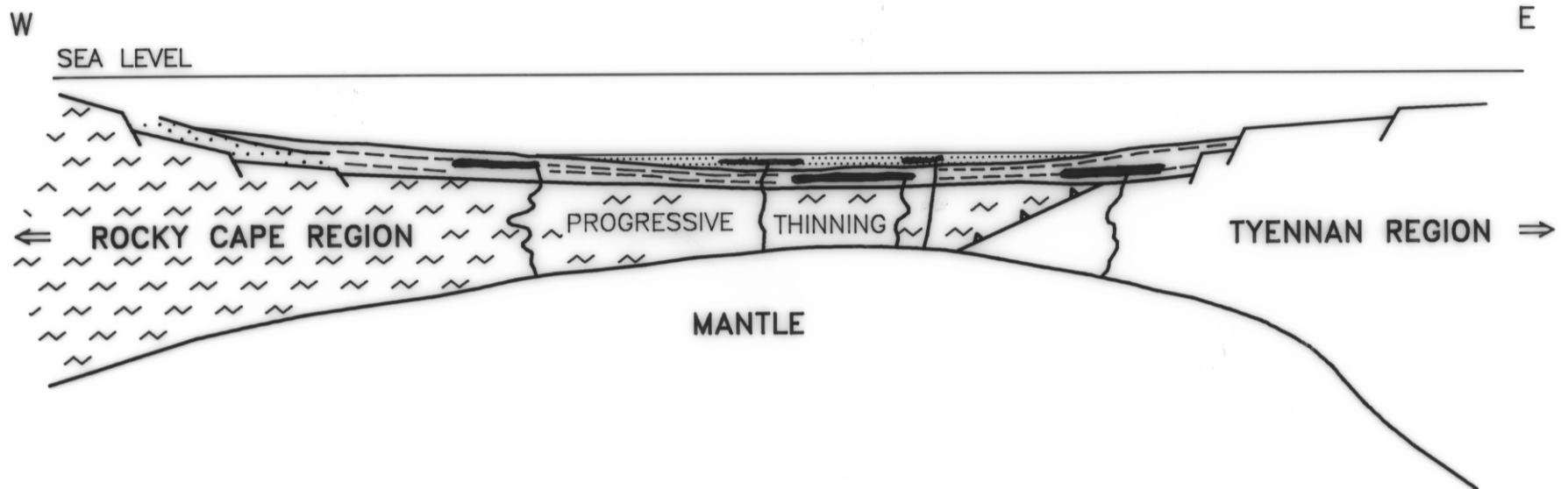



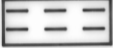
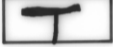


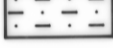
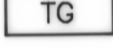
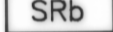
# DEVELOPMENT OF DUNDAS TROUGH

BETWEEN LATITUDES 5340 TO 5380 N

## a. EARLIER DEVELOPMENT

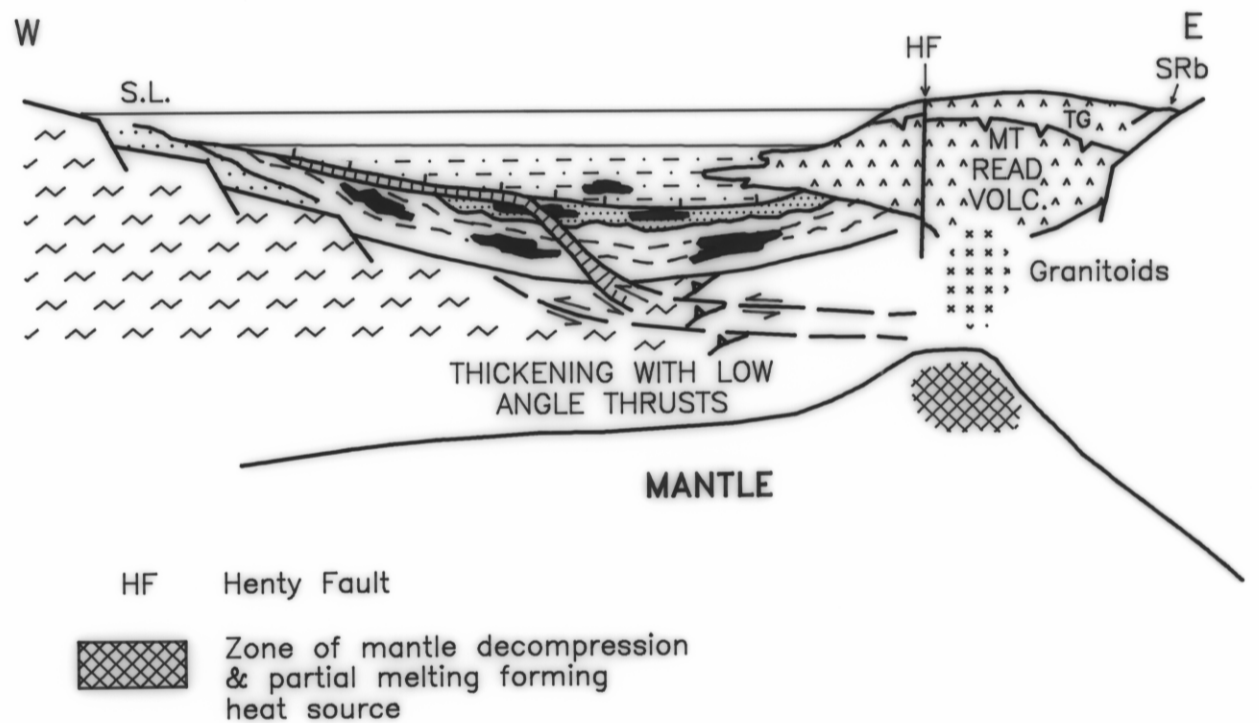
Extension phase



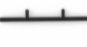




-  Success Ck. Group
-  Crimson Ck. Group
-  Basalt/andesite lava
-  Cleveland-Waratah association
-  Tectonically emplaced ultramafic body
-  Dundas Group—youngest deposit late €
-  Tyndall Group—basal deposit middle €
-  Sticht Range beds

## b. LATER DEVELOPMENT

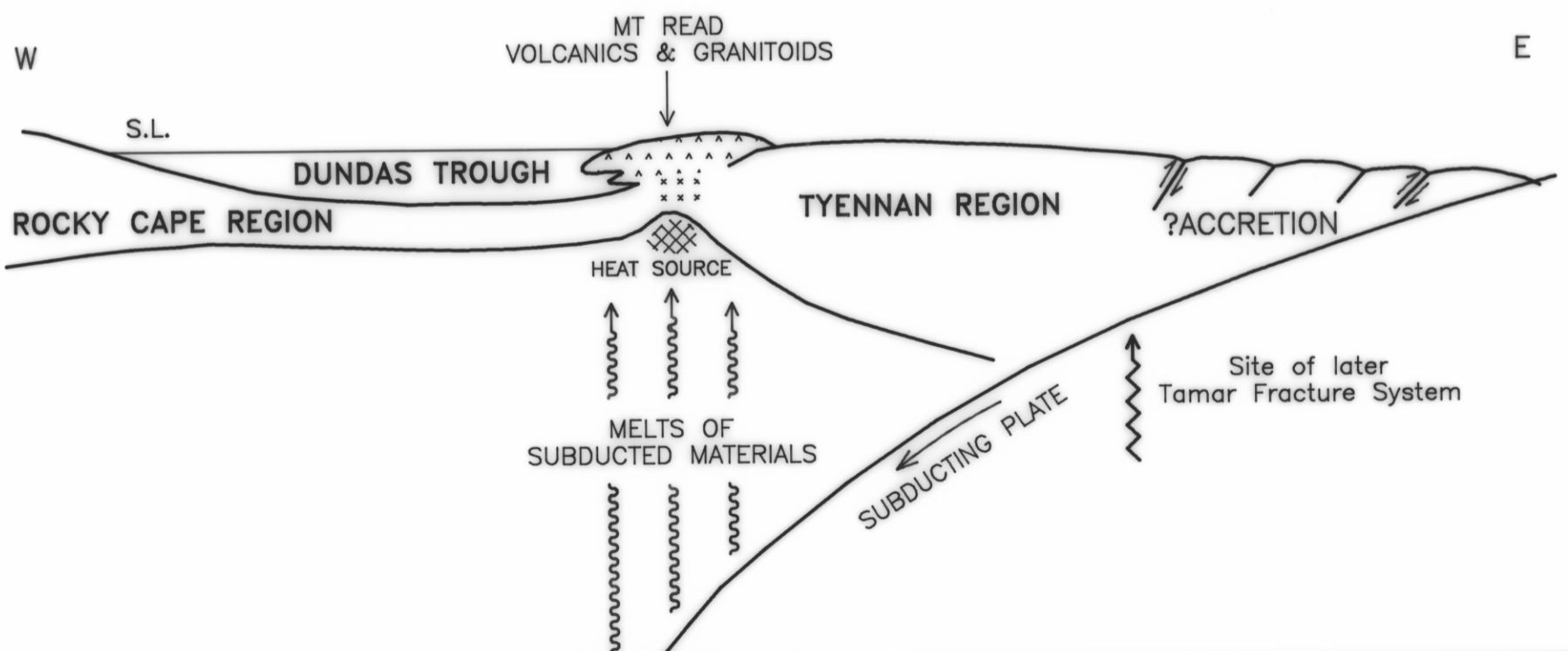
Compression phase followed by extension  
TO BEGINNING OF OWEN CONGLOMERATE DEPOSITION



-  Precambrian crustal anisotropy
-  Low angle thrust
-  Erosional level/unconformity
-  Unconformity

- HF Henty Fault
-  Zone of mantle decompression & partial melting forming heat source

## c. SUBDUCTION MODEL FOR MT READ VOLCANISM



5 cm