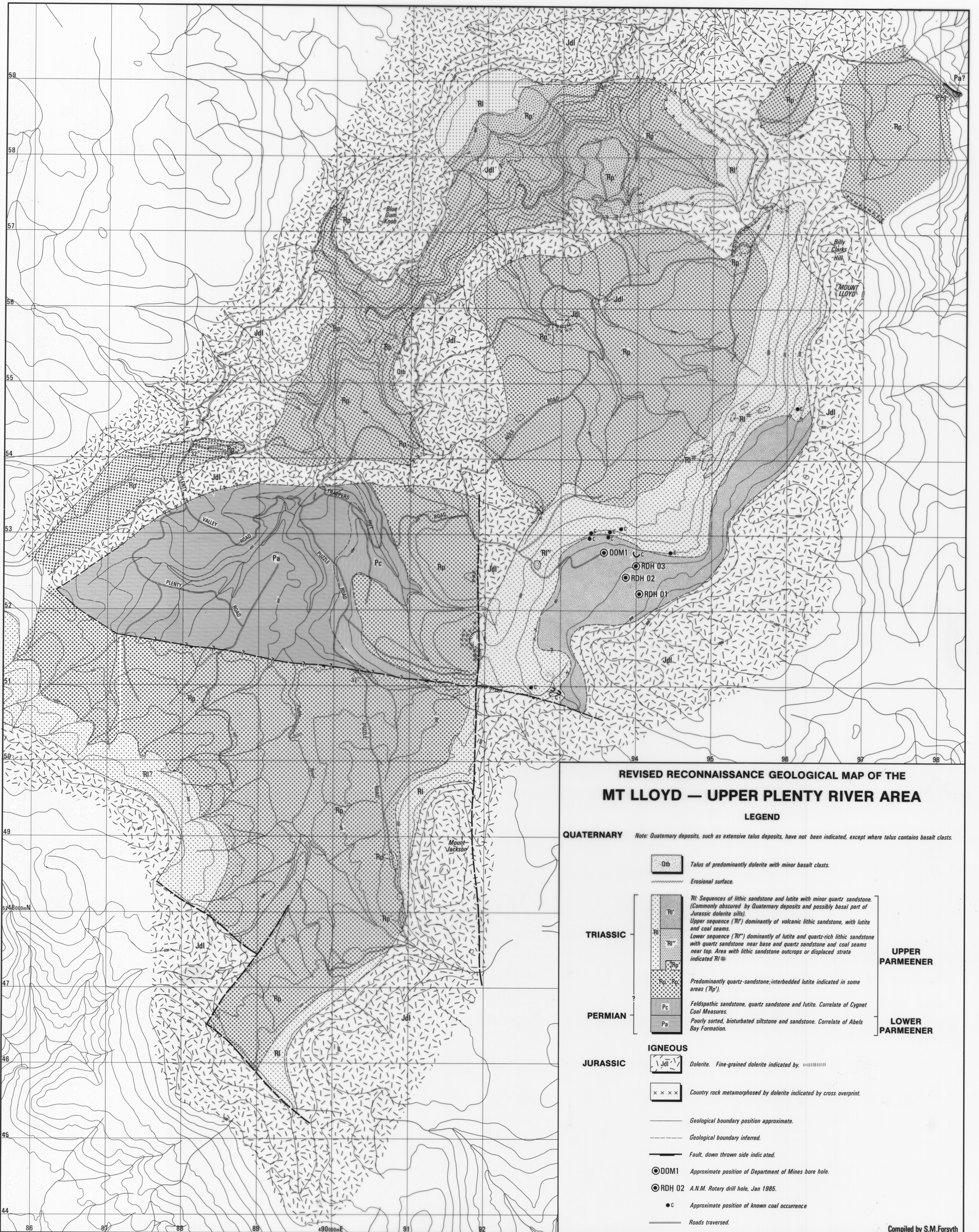


5 cm



**REVISED RECONNAISSANCE GEOLOGICAL MAP OF THE
MT LLOYD — UPPER PLENTY RIVER AREA**

LEGEND

- QUATERNARY** *Note: Quaternary deposits, such as extensive talus deposits, have not been indicated, except where talus contains basalt clasts.*
- Talus of predominantly dolerite with minor basalt clasts.
 - Erosional surface.
- TRIASSIC**
- Ri* Sequences of lithic sandstone and lutite with minor quartz sandstone. (Commonly obscured by Quaternary deposits and possibly basal part of Jurassic dolerite sills).
 - Ri'* Upper sequence (*Ri'*) dominantly of volcanic lithic sandstone, with lutite and coal seams.
 - Ri''* Lower sequence (*Ri''*) dominantly of lutite and quartz-rich lithic sandstone with quartz sandstone near base and quartz sandstone and coal seams near top. Area with lithic sandstone outcrops or displaced strata indicated *Ri''*±.
 - Rip* Predominantly quartz-sandstone; interbedded lutite indicated in some areas (*Rip'*).
- PERMIAN**
- Pc* Feldspathic sandstone, quartz sandstone and lutite. Correlate of Cygnet Coal Measures.
 - Pa* Poorly sorted, bioturbated siltstone and sandstone. Correlate of Abels Bay Formation.
- JURASSIC**
- Jdl* Dolerite. Fine-grained dolerite indicated by .
 - Country rock metamorphosed by dolerite indicated by cross overprint.
- Geological boundary position approximate.
- Geological boundary inferred.
- Fault, down thrown side indicated.
- DOM1 Approximate position of Department of Mines bore hole.
- RDH 02 A.N.M. Rotary drill hole, Jan 1985.
- c Approximate position of known coal occurrence.
- Roads traversed.

Compiled by S.M.Forsyth