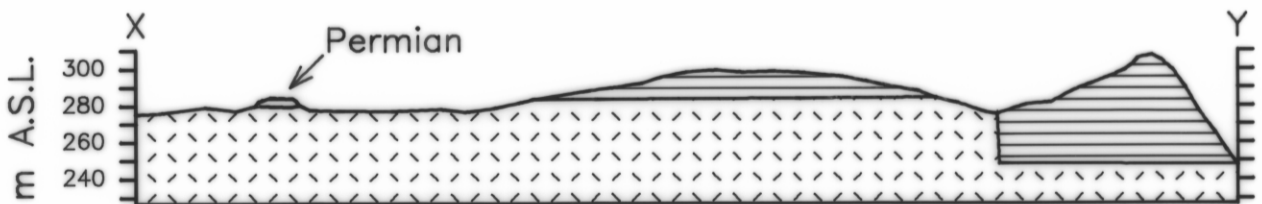
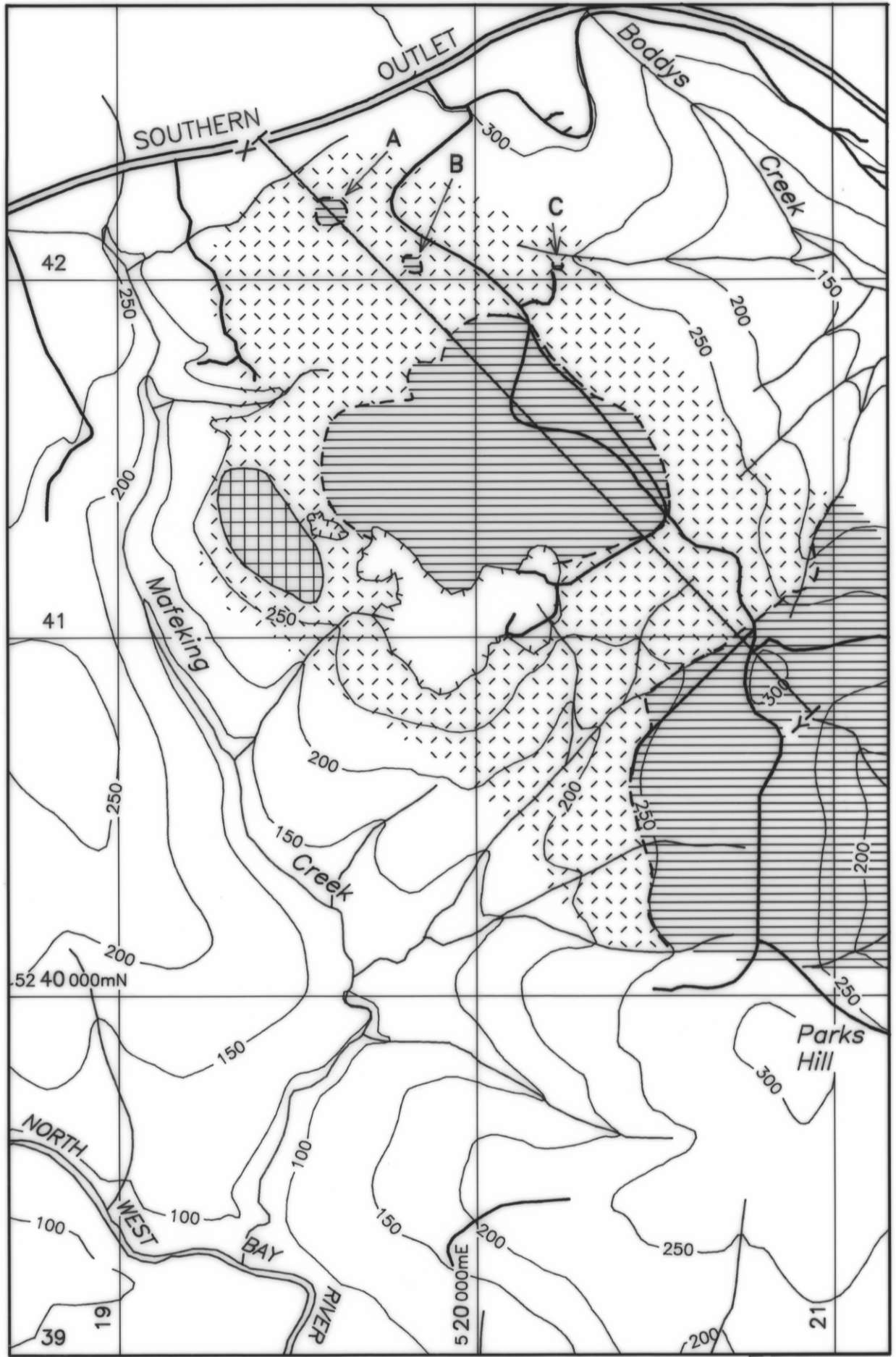


5 cm




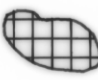


GEOLOGY AROUND H.B.M.I. QUARRY SITE 5287

LESLIE VALE

TASMANIA DEPARTMENT OF MINES AUTHOR L.MATTHEWS U/R 1989/08



LEGEND

	Jurassic Dolerite		Quarried Area
	Permian - undifferentiated		Area of seismic tests
	Geological boundary (approximate)		Line of section

0 1 km
Scale