

LAKE MIKANY – BEACOM HILLS, GEOL MAP

FIGURE 33

SMITHTON EXPL. REPORT.

AUTHOR: P.G. LENNOX

TASMANIA DEPARTMENT OF MINES,

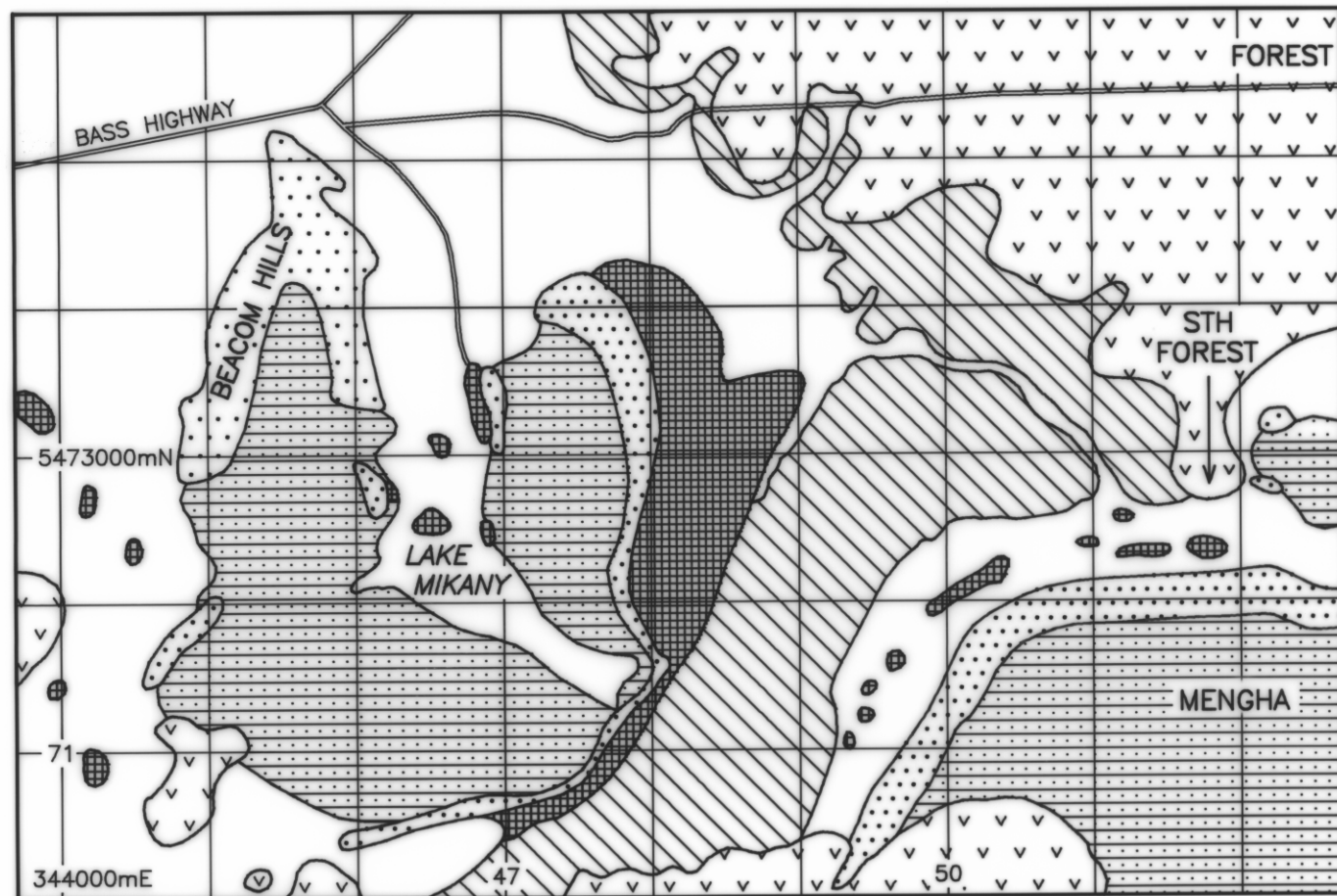
DRAFTER: J.S.L.

5296 AE

5296AE

82-1

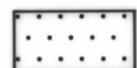
5 cm



Tertiary basalt



Alluvium



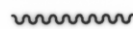
Cambrian sedimentary sequence



Smithton Dolomite



Forest Conglomerate and Quartzite
unconformity



Cowrie Siltstone and correlates



geological boundary