

TASMANIAN ZONE – INFERRED NOTOSPIRIFERID PHYLOGENY (FOSSILS)

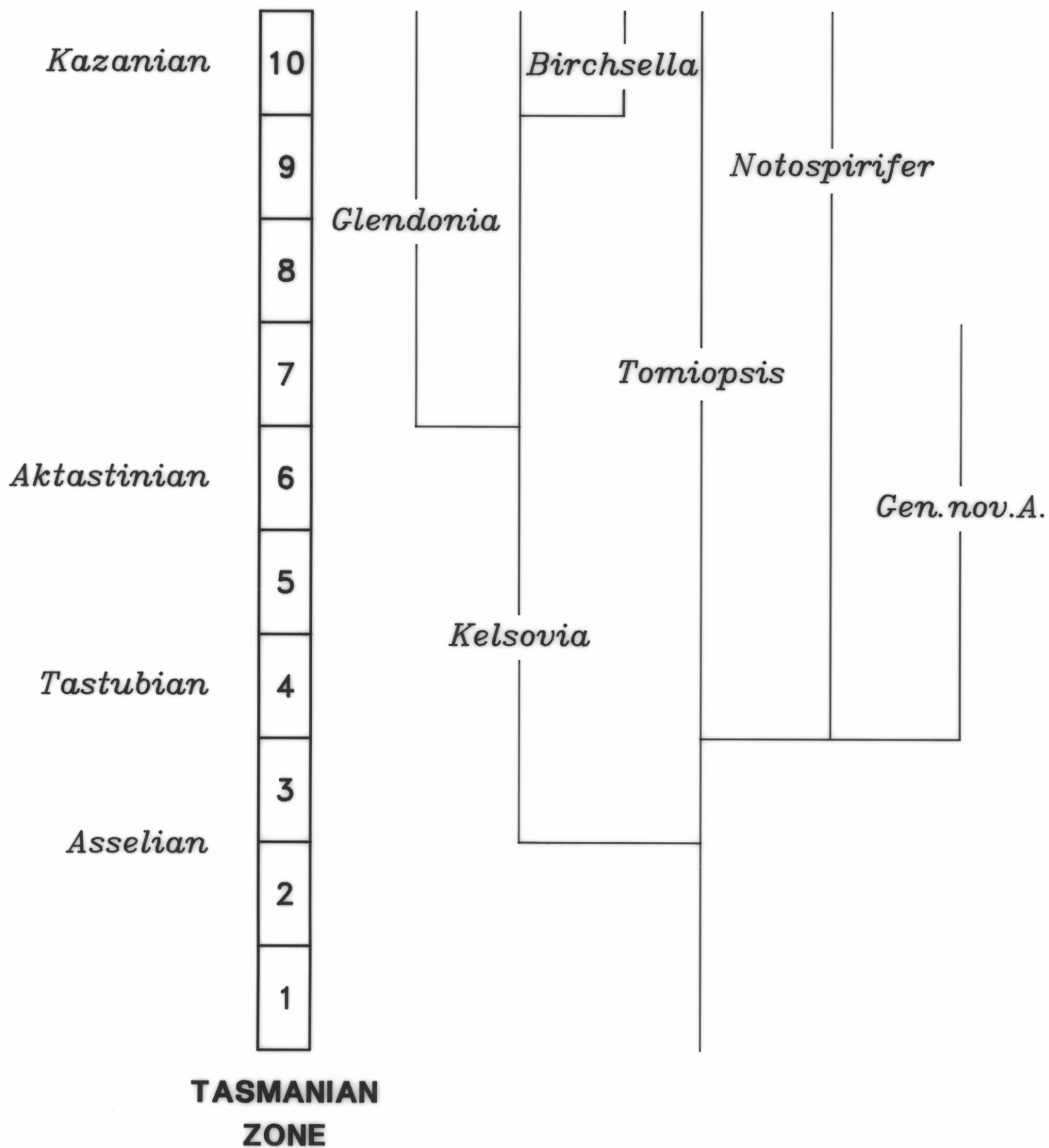
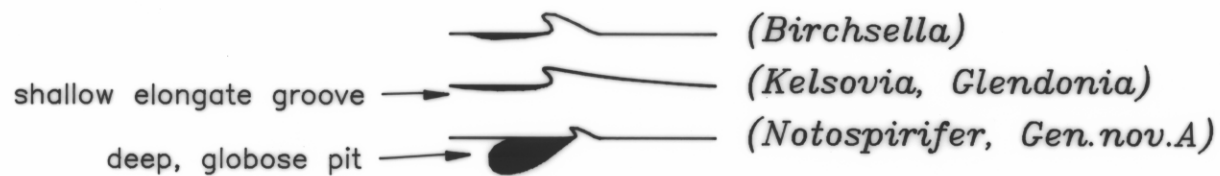
FIGURE No. PROC. INT. BRACHIOPOD CONGRESS 1990

AUTHOR: M.J. CLARKE

TASMANIA DEPARTMENT OF MINES,

DRAFTSPERSON: J.S. LADANIWSKYJ

5327



5 cm

136

5327