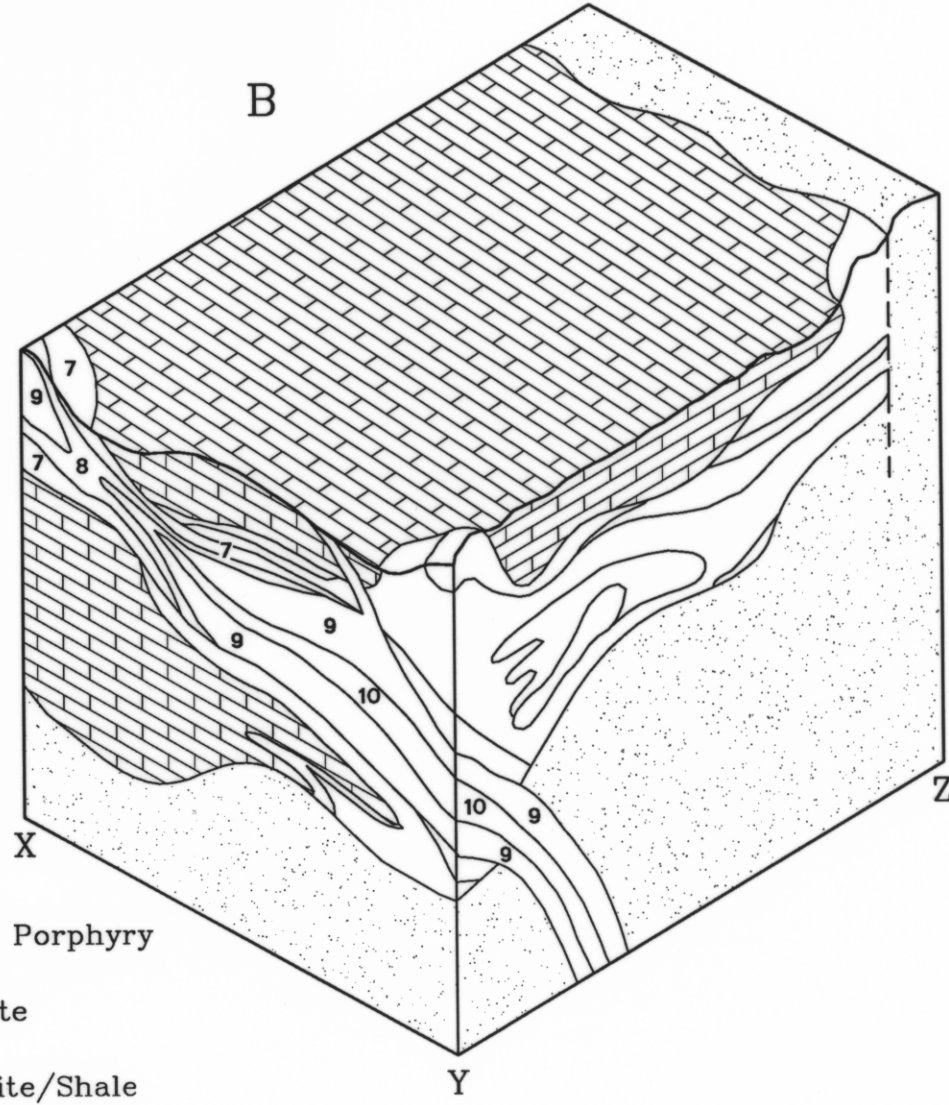
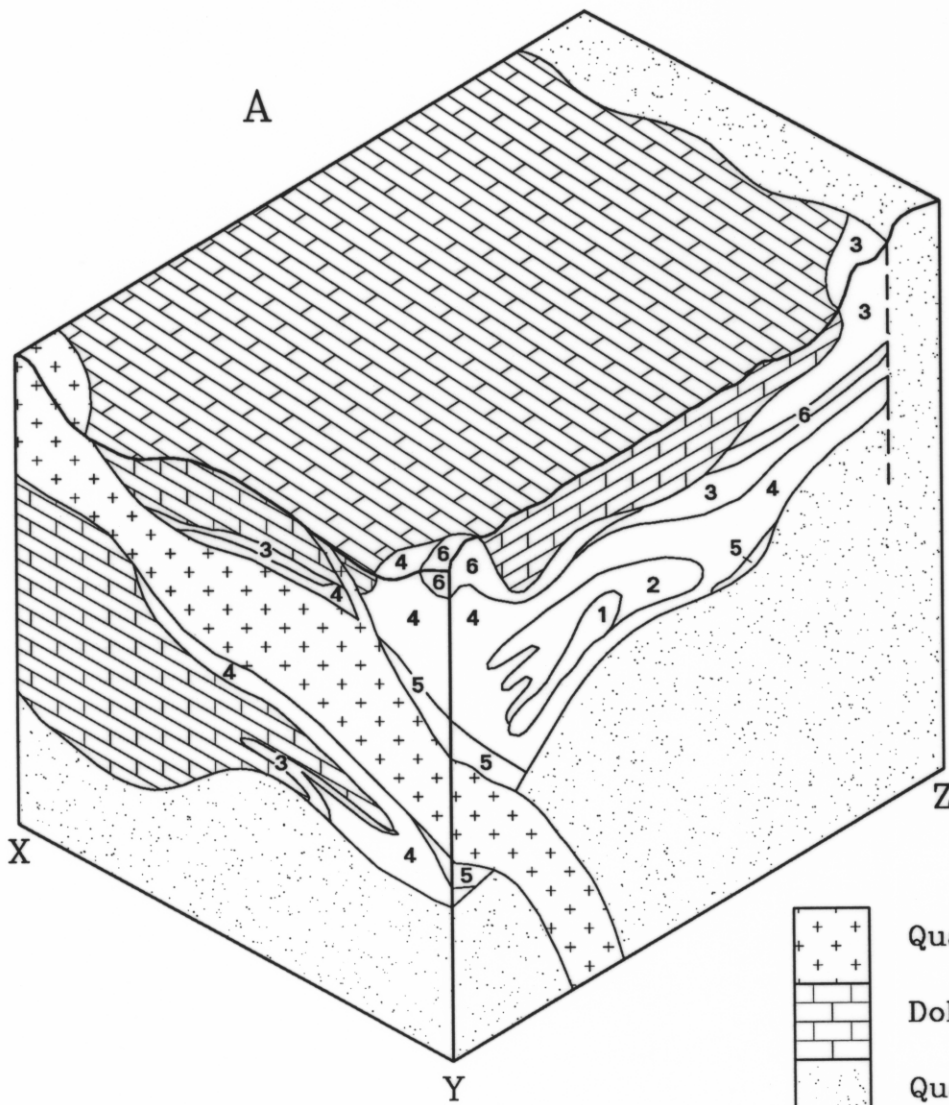


5 cm

MT BISCHOFF, BLOCK SECTION OF GREISEN
 FIGURE No. EXCURSION GUIDE FOR GEOLOGICAL CONVENTION 1990 AUTHOR: N.J. TURNER
 TASMANIA DEPARTMENT OF MINES, DRAFTSPERSON: ASM 17/01/90 5329B



- | | | | | |
|---------------|-------------|--------------|-----------------------------------|---------------------|
| 1 Serpentine | 3 Carbonate | 5 Quartz | 7 Potassic (variably sericitized) | 9 Sulphidic Greisen |
| 2 Chondrodite | 4 Talc | 6 Phlogopite | 8 Sideritic Greisen | 10 Silicic Greisen |

0 25 50
 Scale