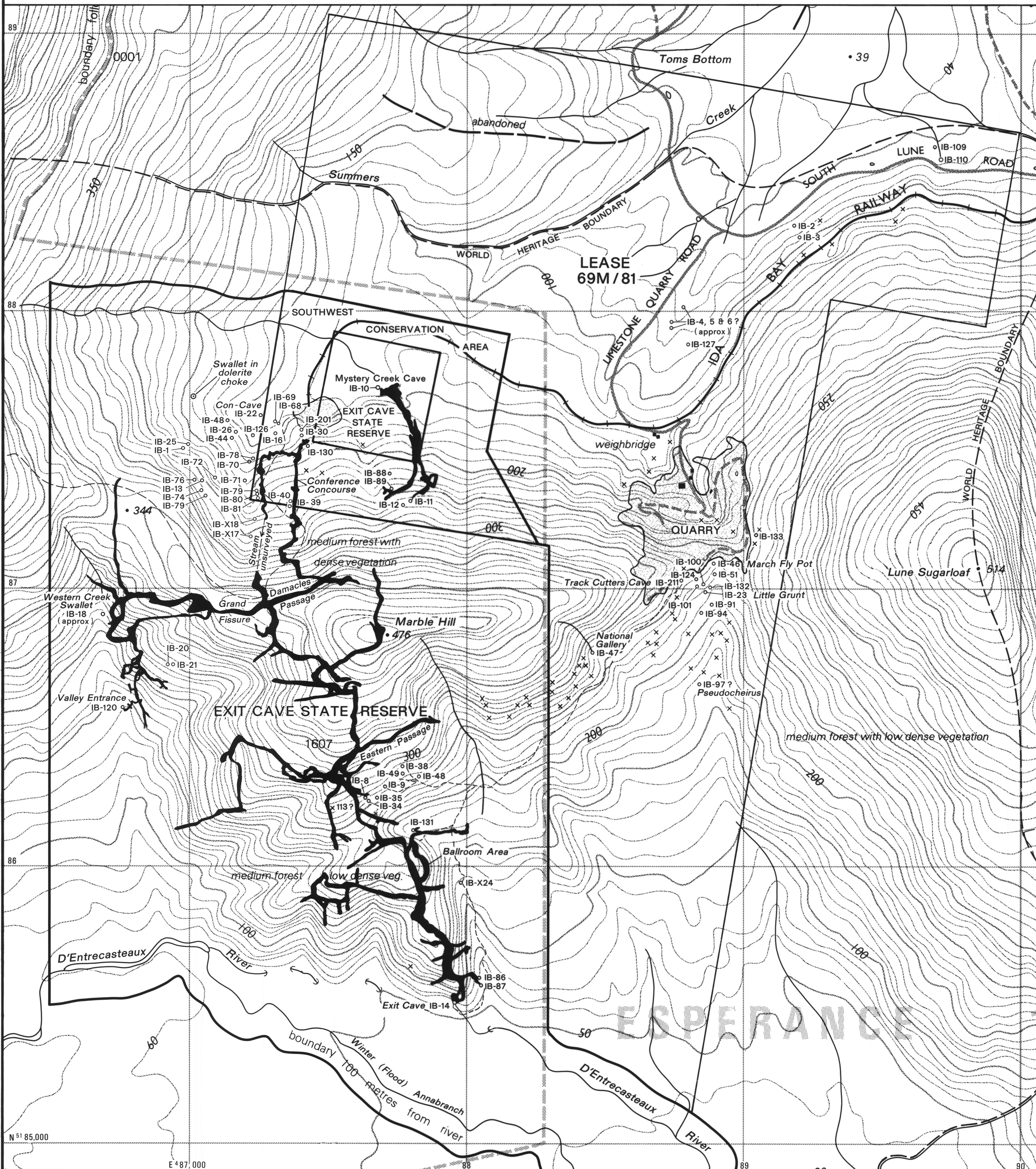


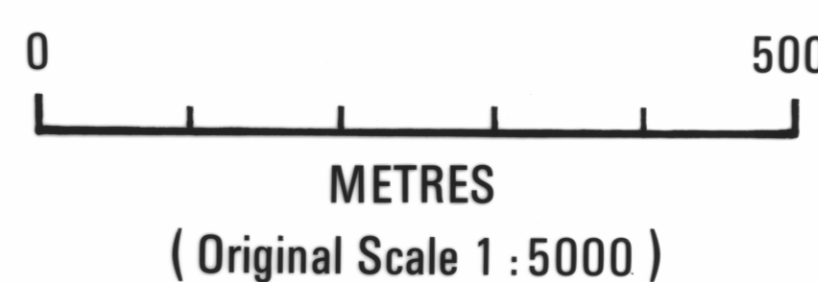
# SURVEYED CAVE ENTRANCES & KARST DRAINAGE AT MARBLE HILL SOUTHERN TASMANIA



**NOTES**

EXIT CAVE SURVEY BASED ON 1972 PLAN MAP WITH ADDITION OF FURTHER SURVEY MATERIAL KNOWN TO COMPILER. EXIT CAVE POSITION FIXED TO TWO KNOWN ENTRANCES (IB-8 and IB-120) BOTH TIED INTO AMG. ALL OTHER CAVE ENTRANCES SURVEYED TO AMG.

- x CAVE ENTRANCE - POSITION ESTIMATED
- o CAVE ENTRANCE - SURVEYED
- UNDERGROUND CAVE PASSAGE
- WALKING TRACKS: LA PEROUSE TRACK & SKINNER TRACK



BASED ON ORIGINAL MAP & ADDITIONAL INFORMATION COMPILED 8-8-1989 BY ARTHUR CLARKE  
DRAFTING BY DIVISION OF MINES AND MINERAL RESOURCES  
DRAFTSMAN: ROB. TURVEY  
BASED ON LEPRENA SHEET 1:25,000 (TASMAPS - 4818  
ASF MAP NUMBER 7 IB - TCK 30 1985 EDITION)

F.J.B. REPORT No.	
DATE:	APPROVED:
D.O.M.M.R. PLAN 5345 A	