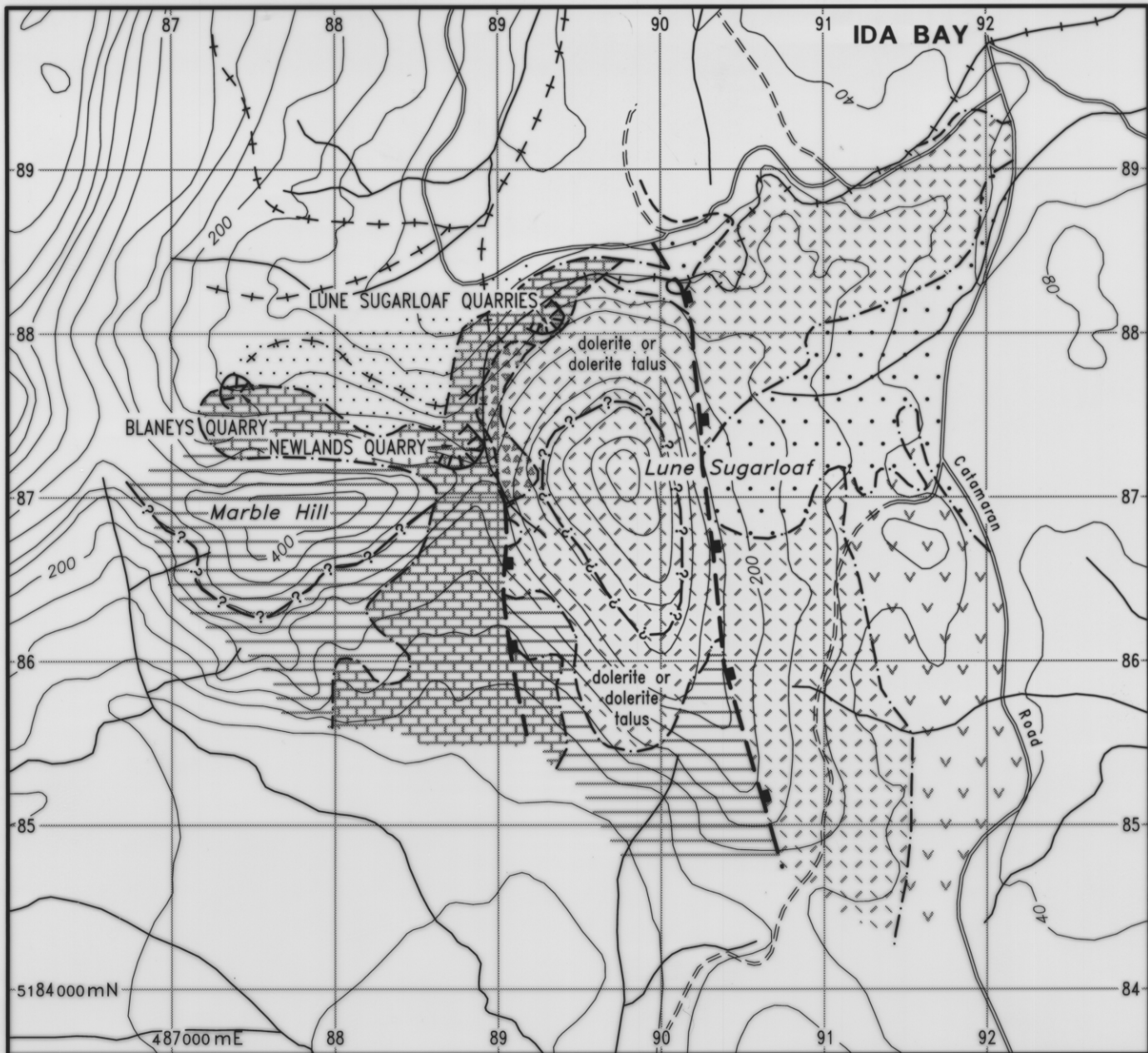


5 cm

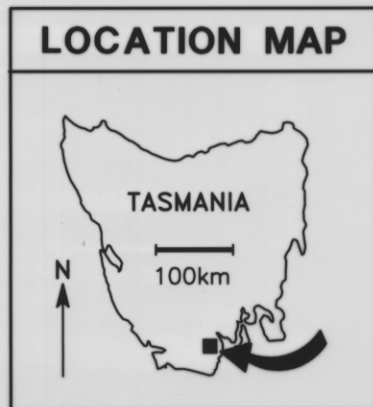
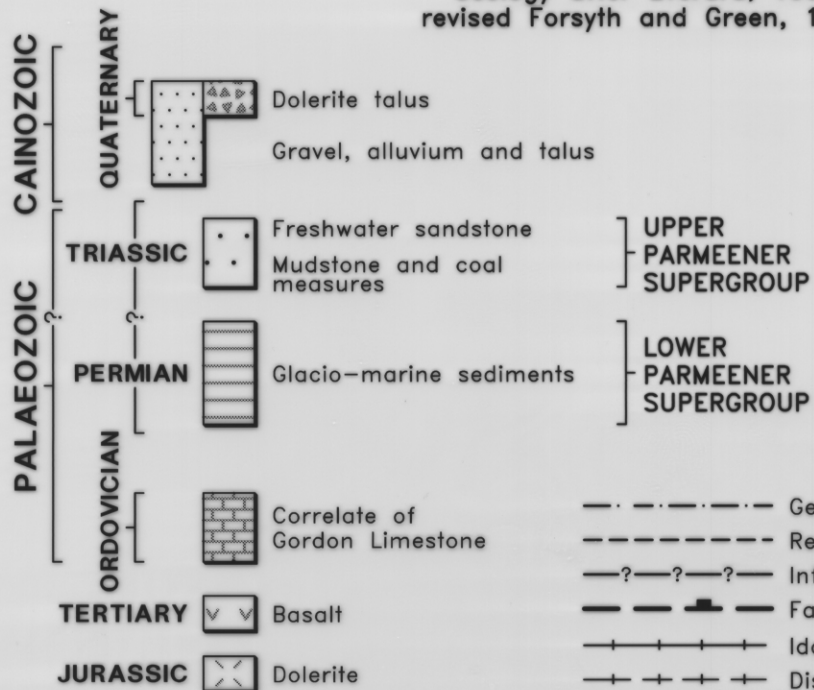
219



## GEOLOGY OF THE QUARRY AREA - LUNE RIVER

0 1 2 km

Geology after Everard, 1957  
revised Forsyth and Green, 1976



- Geological boundaries after Everard, 1957
- Revised geological boundaries
- Inferred boundary
- Fault - downward side indicated
- Ida Bay Railway
- Disused railway

F.J.B. REPORT No. 014  
Date: 3-6-76 Approved: F.J.B.  
D.O.M.M.R. Plan 5345D

FIG. 1