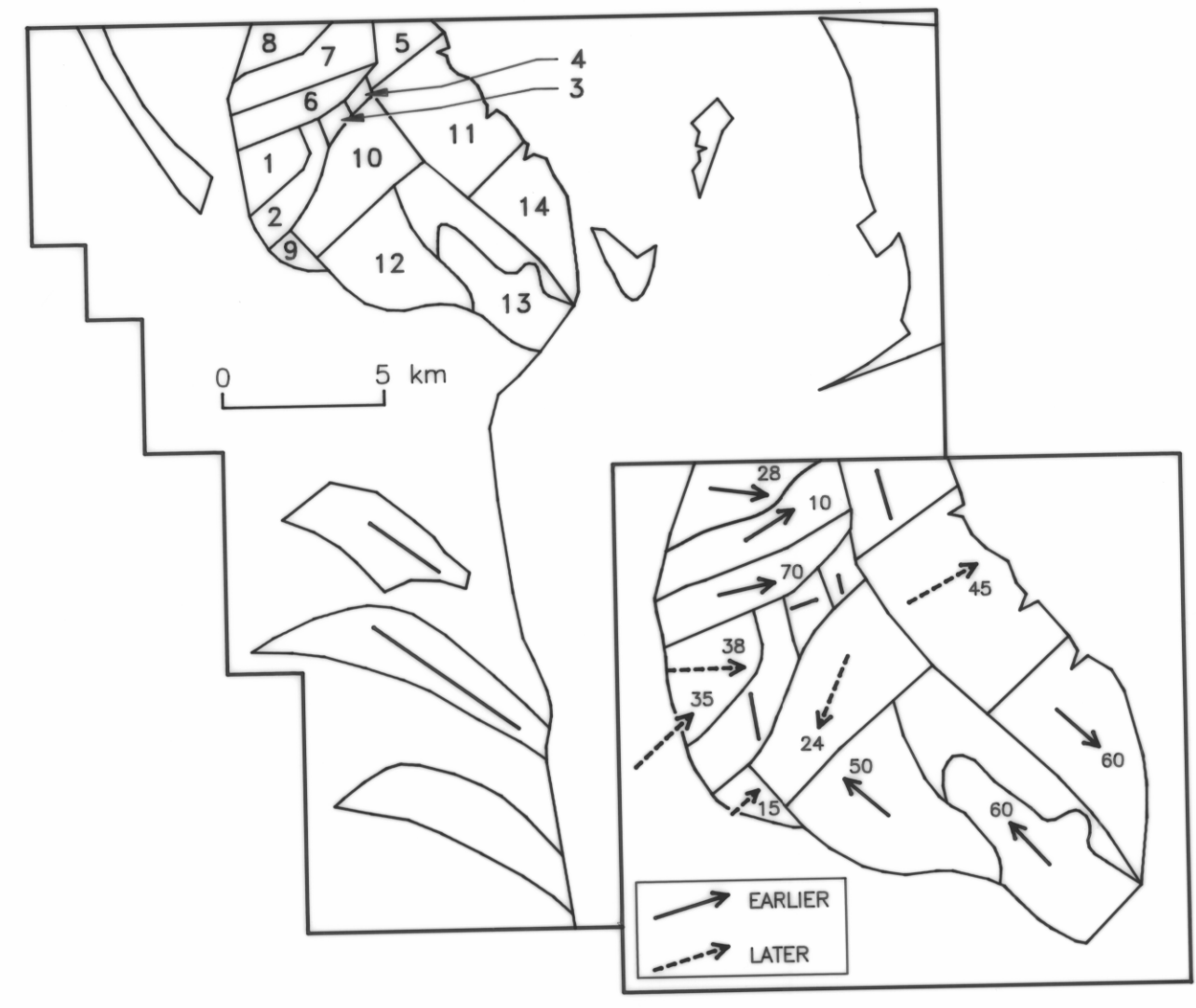
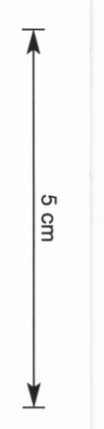


PEDDER QUAD - POSSIBLY MIDDLE CAMBRIAN OR LATER ROCKS
 FIGURES N19-N33
 TASMANIA DEPARTMENT OF MINES,
 PEDDER EXPL. REPORT.
 DRAFTSPERSON: J. LADANIMISIKU
 AUTHOR: N.J. TURNER
5346 D



STRUCTURAL SUBAREAS
 Caw rocks - inset: structural trends

5346 D
 5346 D
 225