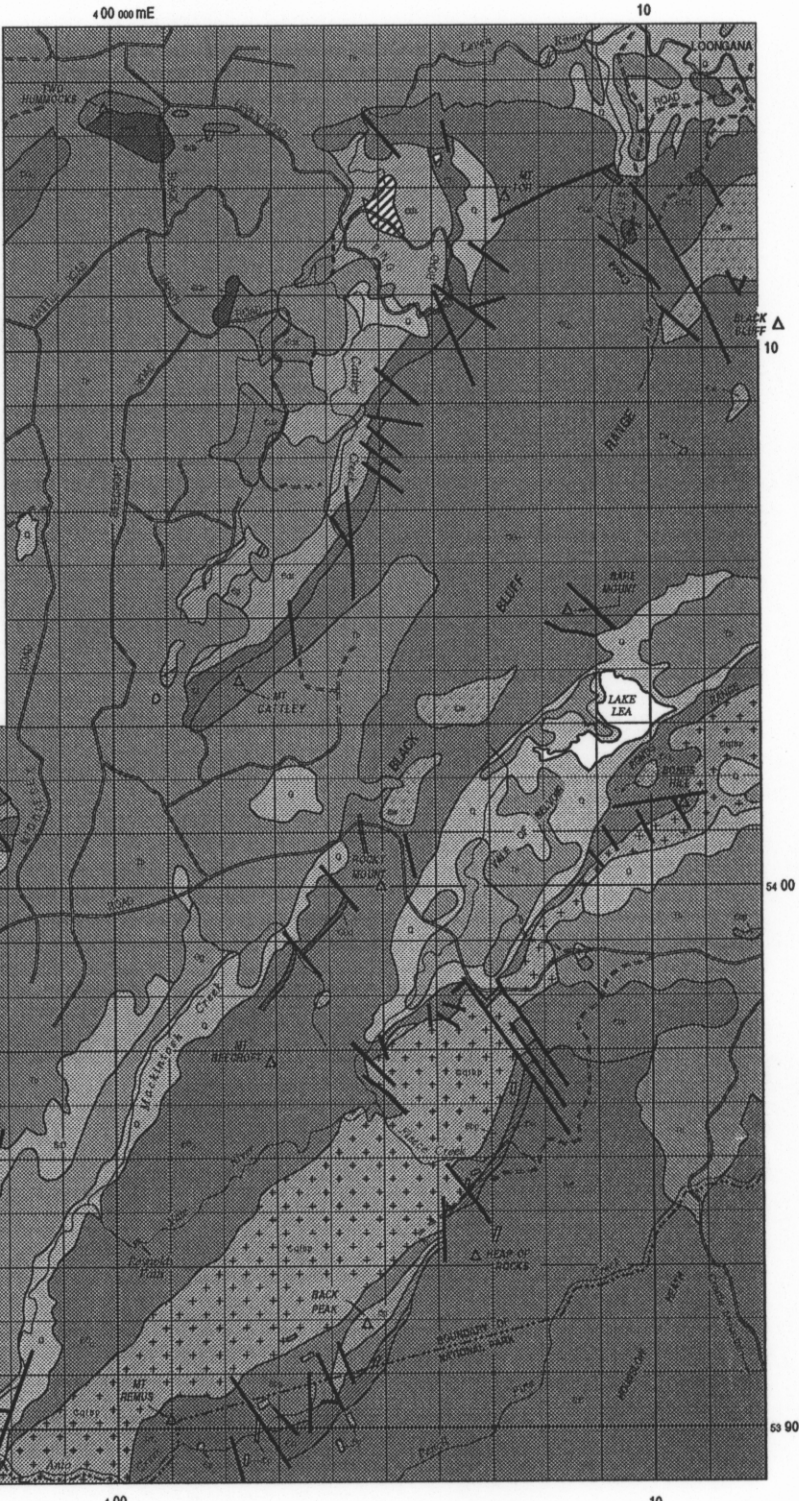


**SIMPLIFIED GEOLOGY OF THE CRADLE MOUNTAIN LINK ROAD - MT OR AREA**

	Quaternary deposits		CENTRAL VOLCANIC COMPLEX Feldspar-phyric volcanics
	Tertiary basalt		UNDIFFERENTIATED CAMBRIAN SEQUENCES
	Siluro-Devonian Eldon Group		Tuffs, volcaniclastic sandstones and minor lavas of Black Bluff Ra. windows
	Ordovician limestone-Gordon Group		Back Peak Beds
	Ordovician basaltic lava and Ordovician? dolerite intrusives		Sticht Range Beds
	Late Cambrian-early Ordovician Denison Group		INTRUSIVES
	CAMBRIAN MT READ VOLCANICS		Quartz-feldspar porphyry
	DUNDAS-TYNDALL GROUP CORRELATES		Bonds Range quartz-feldspar-biotite porphyry
	Mainly volcaniclastic conglomerate and sandstone		Ring Road metadolerite
	Southwell Subgroup - tuff, greywacke, siltstone		PRECAMBRIAN
	Dolerite		Quartzite, phyllite, schist
	Que River Shale		Fault, approximate
	QUE SHEPHERDS VOLCANICS		Fault, inferred
	Upper basalt and andesite		Geological boundary
	Mixed sequence		Road
	Lower andesite, basalt and tuff		Track
	Animal Creek Greywacke and correlates		
	Tuffaceous sediments and vitric tuff		

SCALE 0 1 2 3 4 5 km



Pemberton et al. MRVP Rep.4 5349A

Produced using 'Corel Draw'  
 Coloured .cdr on file on diskette

Draftsman JSL.

Jan 1991