

5 cm

CROSS-SECTION FROM HELLYER MINE TO MXRD-1 AND TWO HUMMOCKS

FIGURE No.

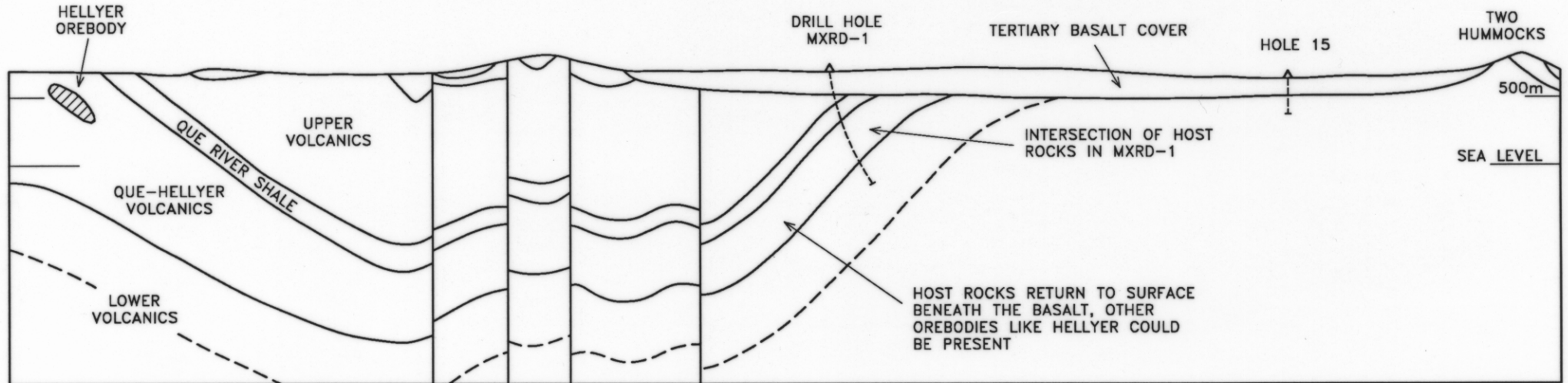
CAREER DISPLAY 7/91

AUTHOR: K.D.CORBETT

DIVISION OF MINES & MINERAL RESOURCES

DRAFTSPERSON: ASM 10/07/91

5349AB



CROSS-SECTION FROM HELLYER MINE TO MXRD-1 AND TWO HUMMOCKS

The cross-section shows how the Que-Hellyer Volcanics, containing the Hellyer and Que River orebodies, plunges away under younger rocks north of Hellyer, but then re-surfaces under the thin basalt cover near MXRD-1. Other orebodies could well be located in this area. and would be shallow enough to mine.