

SAMPLE LOCALITY MAP OF THE MT. CATTLEY—MT. TOR AREA (M.R.V.P. MAP 8)

SCALE 1 : 25 000

Field No.	Mines Dept. Cat No.	Field No.	Mines Dept. Cat No.	Field No.	Mines Dept. Cat No.	Field No.	Mines Dept. Cat No.
J001	C103301	J066	C103366	J216	C103416	J636	C104844
J002	C103302	J067	C103367	J217	C103417	J637	C104845
J003	C103303	J068	C103368	J218	C103418	V091	C103091
J004	C103304	J069	C103369	J219	C103419	V092	C103092
J005	C103305	J070	C103370	J220	C103420	V093	C103093
J006	C103306	J071	C103371	J221	C103421	V094	C103094
J007	C103307	J072	C103372	J222	C103422	V095	C103095
J008	C103308	J073	C103373	J223	C103423	V096	C103096
J009	C103309	J074	C103374	J224	C103424	V097	C103097
J010	C103310	J075	C103375	J225	C103425	V098	C103098
J011	C103311	J076	C103376	J226	C103426	V099	C103099
J012	C103312	J077	C103377	J227	C103427	V100	C103100
J013	C103313	J078	C103378	J228	C103428	V156	C103156
J014	C103314	J079	C103379	J229	C103429	V157	C103157
J015	C103315	J080	C103380	J230	C103430	V158	C103158
J016	C103316	J081	C103381	J231	C103431	V159	C103159
J017	C103317	J082	C103382	J232	C103432	V160	C103160
J018	C103318	J083	C103383	J233	C103433	V161	C103161
J019	C103319	J084	C103384	J234	C103434	V162	C103162
J020	C103320	J085	C103385	J235	C103435	V163	C103163
J021	C103321	J086	C103386	J236	C103436	V164	C103164
J022	C103322	J087	C103387	J237	C103437	V165	C103165
J023	C103323	J088	C103388	J238	C103438	V166	C103166
J024	C103324	J089	C103389	J239	C103439	V167	C103167
J025	C103325	J090	C103390	J240	C103440	V168	C103168
J026	C103326	J091	C103391	J241	C103441	V169	C103169
J027	C103327	J092	C103392	J242	C103442	V170	C103170
J028	C103328	J093	C103393	J243	C103443	V171	C103171
J029	C103329	J094	C103394	J244	C103444	V172	C103172
J030	C103330	J095	C103395	J245	C103445	V173	C103173
J031	C103331	J096	C103396	J246	C103446	V174	C103174
J032	C103332	J097	C103397	J247	C103447	V175	C103175
J033	C103333	J098	C103398	J248	C103448	V176	C103176
J034	C103334	J099	C103399	J249	C103449	V177	C103177
J035	C103335	J100	C103400	J250	C103450	V178	C103178
J036	C103336	J101	C103501	J251	C103451	V179	C103179
J037	C103337	J102	C103502	J252	C103452	V182	C103182
J038	C103338	J103	C103503	J253	C103453	V183	C103183
J039	C103339	J104	C103504	J254	C103454	V184	C103184
J040	C103340	J105	C103505	J255	C103455	V195	C103195
J041	C103341	J106	C103506	J256	C103456	V196	C103196
J042	C103342	J107	C103507	J257	C103457	V197	C103197
J043	C103343	J108	C103508	J258	C103458	V198	C103198
J044	C103344	J109	C103509	J259	C103459	V199	C103199
J045	C103345	J110	C103510	J260	C103460	V200	C103200
J046	C103346	J111	C103511	J266	C103466	V201	C103201
J047	C103347	J112	C103512	J267	C103467	V202	C103202
J048	C103348	J113	C103513	J268	C103468	V203	C103203
J049	C103349	J114	C103514	J281	C103481	V226	C103226
J050	C103350	J115	C103515	J288	C103488	V227	C103227
J051	C103351	J116	C103516	J289	C103489	V262	C103262
J052	C103352	J117	C103517	J290	C103490	V263	C103263
J053	C103353	J118	C103518	J291	C103491	V264	C103264
J054	C103354	J119	C103519	J292	C103492	V265	C103265
J055	C103355	J120	C103520	J293	C103493	V266	C103266
J056	C103356	J121	C103521	J296	C103496	V267	C103267
J057	C103357	J122	C103522	J297	C103497	V268	C103268
J058	C103358	J123	C103523	J298	C103498	V269	C103269
J059	C103359	J124	C103524	J300	C103500	V270	C103270
J060	C103360	J125	C103525	J629	C104837	V271	C103271
J061	C103361	J126	C103526	J630	C104838	V272	C103272
J062	C103362	J127	C103527	J631	C104839	V273	C103273
J063	C103363	J128	C103528	J632	C104840	V349	C104051
J064	C103364	J214	C103414	J633	C104841	VP3	RD01616
J065	C103365	J215	C103415	J634	C104842	VP5	RD01616

LEGEND

- Thin section.
- Thin section and chemical analysis.

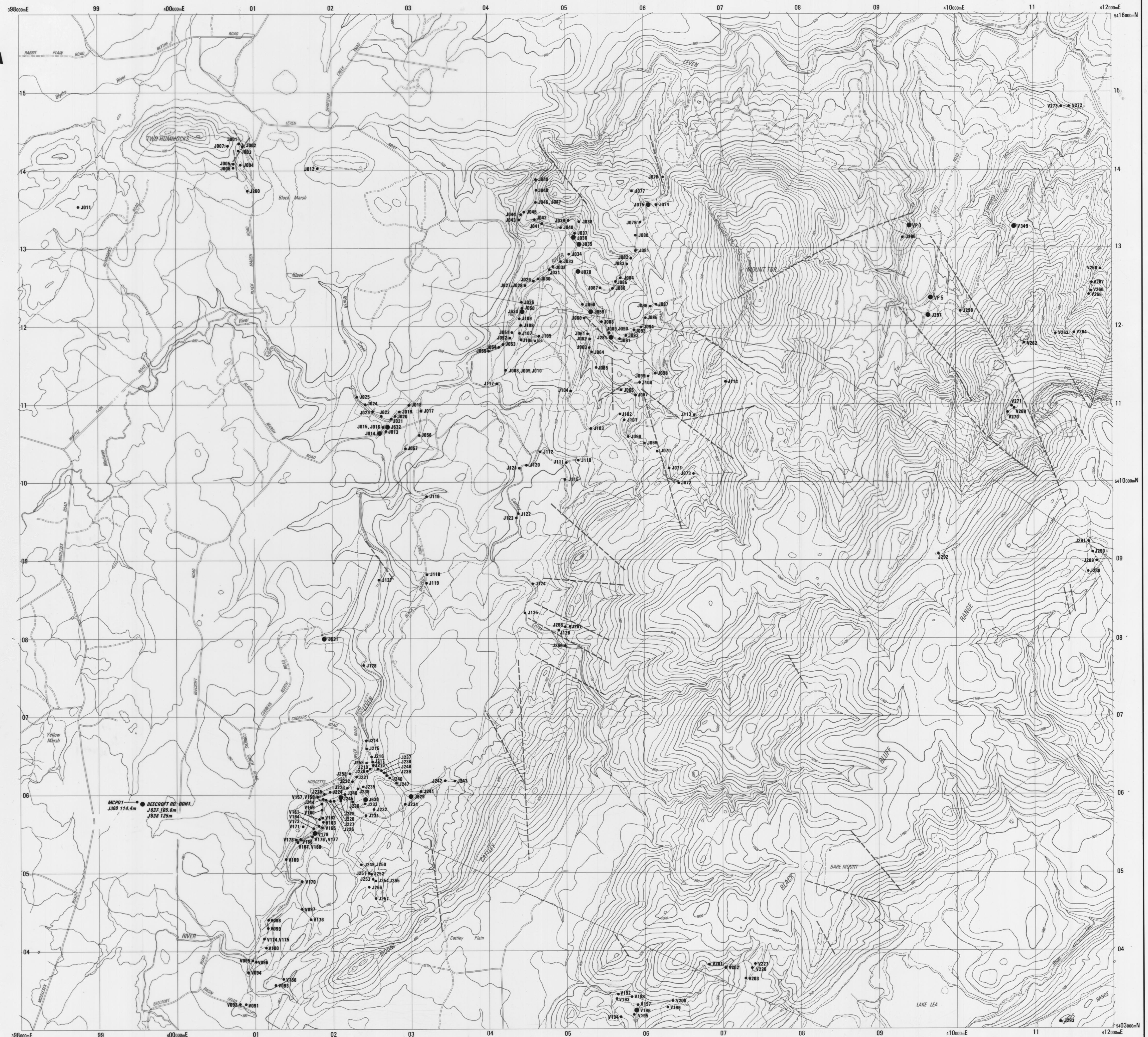


Figure 2B